

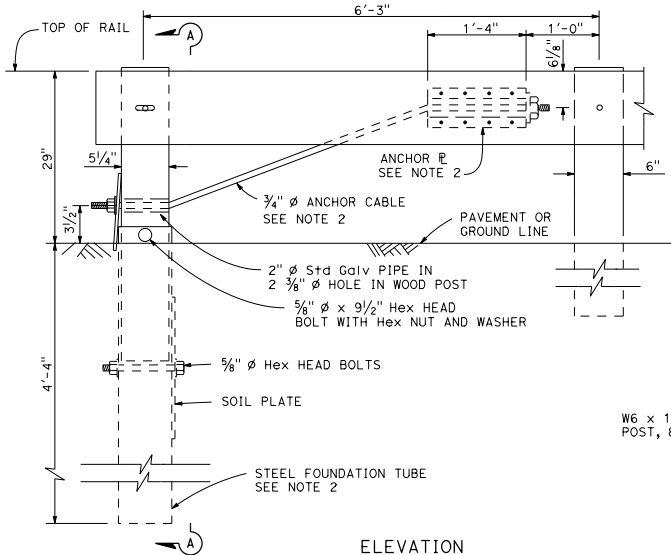
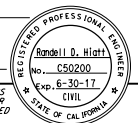
DIST	COUNTY	ROUTE	POST MILES TOTAL PROJECT	SHEET NO.	TOTAL SHEETS

Randell D. Hiatt
REGISTERED CIVIL ENGINEER

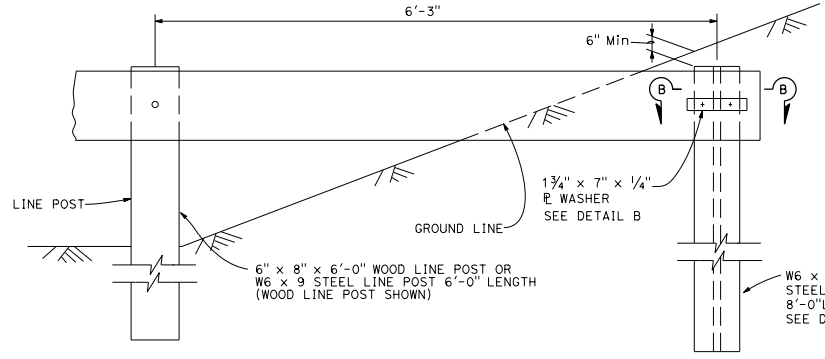
January 20, 2017
PLANS APPROVAL DATE

THE STATE OF CALIFORNIA OR ITS OFFICERS OR AGENTS SHALL NOT BE RESPONSIBLE FOR THE ACCURACY OR COMPLETENESS OF SCANNED COPIES OF THIS PLAN SHEET.

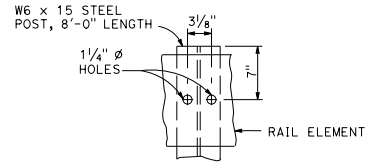
TO ACCOMPANY PLANS DATED _____



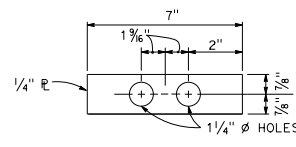
**ELEVATION
END ANCHOR
ASSEMBLY (TYPE SFT)**



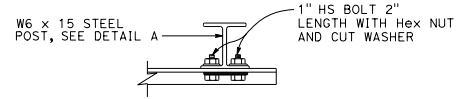
BURIED POST END ANCHOR



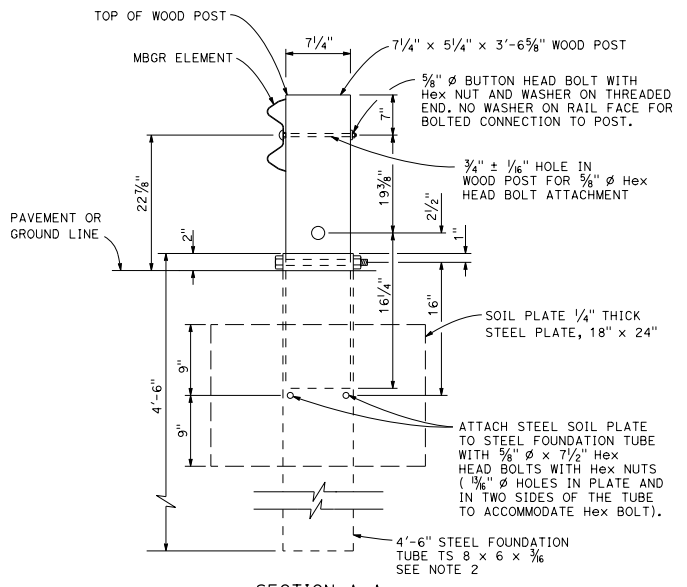
DETAIL A



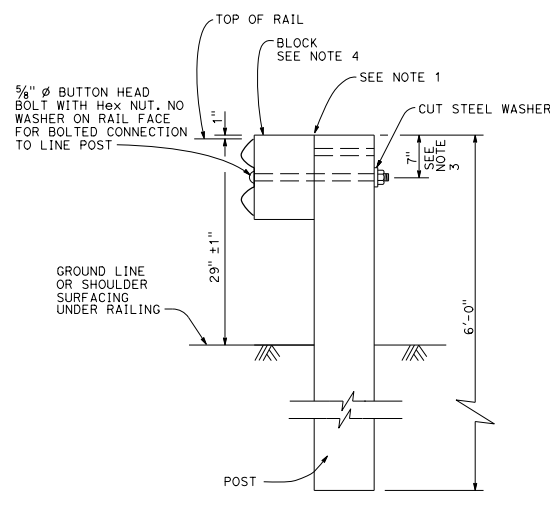
DETAIL B



SECTION B-B



SECTION A-A



**TYPICAL LINE
POST INSTALLATION**

NOTES:

- For wood post and wood block, toenail with 2-16d Galv nails in top of block. For steel post and notched wood or plastic block, notched face of block faces steel post.
- A 6'-0" Length steel foundation tube, TS 8 x 6 x 3/8, without a soil plate, may be furnished and installed in place of the 4'-6" length steel foundation tube and soil plate shown. Minimum embedment of the 6'-0" length tube shall be 5'-9". A 3/8" Ø Hex head bolt and nut shall be installed in the hole in the 6'-0" length tube to keep the wood post from dropping into the tube.
- To connect railing to 27" terminal system end treatment, transition the top of railing height at a ratio of 120:1 to terminal system end treatment height plus one 12'-6" standard railing section at the transitioned height for a horizontal connection to the end treatment.
- See Revised Standard Plans RSP A77N1 and RSP A77N2 for details.

STATE OF CALIFORNIA
DEPARTMENT OF TRANSPORTATION
**METAL BEAM GUARD RAILING
RECONSTRUCT INSTALLATION**

NO SCALE

RSP A77L3 DATED JANUARY 20, 2017 SUPERSEDES STANDARD PLAN A77L3 DATED OCTOBER 30, 2015 - PAGE 51 OF THE STANDARD PLANS BOOK DATED 2015.
REVISED STANDARD PLAN RSP A77L3

2015 REVISED STANDARD PLAN RSP A77L3