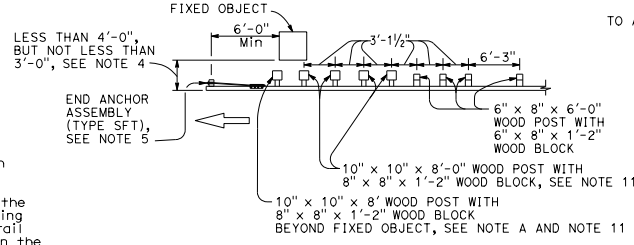


**NOTES:**

- Line post, blocks and hardware to be used are shown on Revised Standard Plans RSP A77L1, RSP A77L2, RSP A77N1, RSP A77N2 and Standard Plan A77M1.
- MGS post spacing to be 6'-3" center to center, except as otherwise noted.
- Except as noted, line posts are 6" x 8" x 6'-0" wood with 6" x 8" x 1'-2" wood blocks. W6 x 8.5 or W6 x 9 steel posts, 6'-0" in length, with 6" x 8" x 1'-2" notched wood blocks or notched recycled plastic blocks may be used for 6" x 8" x 6'-0" wood line posts with 6" x 8" x 1'-2" wood blocks where applicable and when specified.
- A 4'-0" minimum clearance is required between the face of the railing and the face of a fixed object located directly behind MGS sections with post spacing of 6'-3". Construct MGS as shown in the detail "Strengthened Midwest Guardrail System Sections for Fixed Object" on this plan, where the clearance between the face of the railing and the face of a fixed object is less than 4'-0", but not less than 3'-0". Where the clearance is less than 3'-0", a concrete wall or barrier should be constructed to shield the fixed object(s).
- For End Anchor Assembly (Type SFT) details, see Standard Plan A77S1.
- For details of Rail Tensioning Assembly, see Standard Plan A77S2.
- The type of crash cushion to be used will be shown on the Project Plans.
- Type 14A layout is typically used on multilane freeways or expressways to shield fixed objects where a median type barrier is not constructed between the separated roadbeds.
- For typical flare offsets for 25'-0" length parabola with maximum offset of 1'-0", see Revised Standard Plan RSP A77P1.
- The 15:1 or flatter flare is measured off of the edge of traveled way.
- W6 x 15 steel post, 8'-0" in length, with 8" x 8" x 1'-2" notched wood block or notched recycled plastic block may be used in place of the 10" x 10" x 8'-0" wood post with 8" x 8" x 1'-2" wood block shown in the detail "Strengthened Midwest Guardrail System Sections for Fixed Object".
- Use this offset for 8" block. For 12" block use minimum 4'-0" offset.

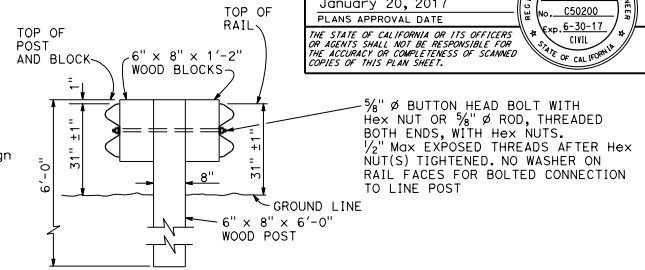


**NOTE A:** For a series of fixed objects (bridge columns, overhead line supports, etc.) additional 10" x 10" x 8'-0" wood post with 8" x 8" x 1'-2" wood blocks at 3'-1/2" center to center spacing are to be used between fixed objects.

**STRENGTHENED MIDWEST GUARDRAIL SYSTEM  
SECTIONS FOR FIXED OBJECT**

Use strengthened MGS sections with Type 14A layout where minimum clearance between the face of the railing and fixed object(s) is less than 4'-0", but not less than 3'-0", See Note 4.

TO ACCOMPANY PLANS DATED \_\_\_\_\_



**SECTION A-A  
TYPICAL DOUBLE MIDWEST  
GUARDRAIL SYSTEM**

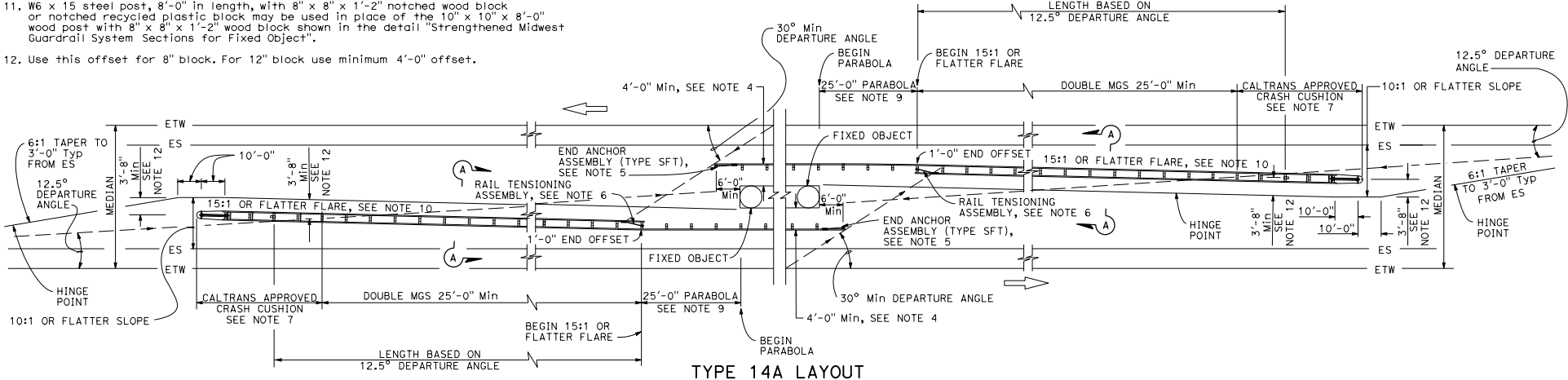
Dist	COUNTY	ROUTE	POST MILES TOTAL PROJECT	SHEET NO.	TOTAL SHEETS

**Randell D. Hiatt**  
REGISTERED CIVIL ENGINEER

January 20, 2017  
PLANS APPROVAL DATE

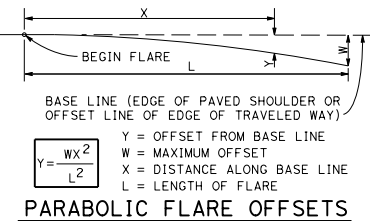
THE STATE OF CALIFORNIA OR ITS OFFICERS OR AGENTS SHALL NOT BE RESPONSIBLE FOR THE ACCURACY OR COMPLETENESS OF SCANNED COPIES OF THIS PLAN SHEET.

REGISTERED PROFESSIONAL ENGINEER  
No. CS0200  
Exp. 6-30-17  
CIVIL  
STATE OF CALIFORNIA

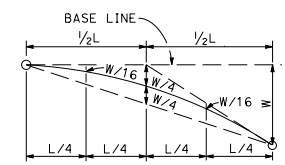


**TYPE 14A LAYOUT**

See Note 8



**PARABOLIC FLARE OFFSETS**



**TYPICAL PARABOLIC LAYOUT**

**MIDWEST GUARDRAIL SYSTEM  
TYPICAL LAYOUTS FOR  
FIXED OBJECTS  
BETWEEN SEPARATE ROADBEDS  
(TWO-WAY TRAFFIC)**

NO SCALE

RSP A77R1 DATED JANUARY 20, 2017 SUPERSEDES STANDARD PLAN A77R1 DATED OCTOBER 30, 2015 - PAGE 74 OF THE STANDARD PLANS BOOK DATED 2015.

**REVISED STANDARD PLAN RSP A77R1**

2015 REVISED STANDARD PLAN RSP A77R1