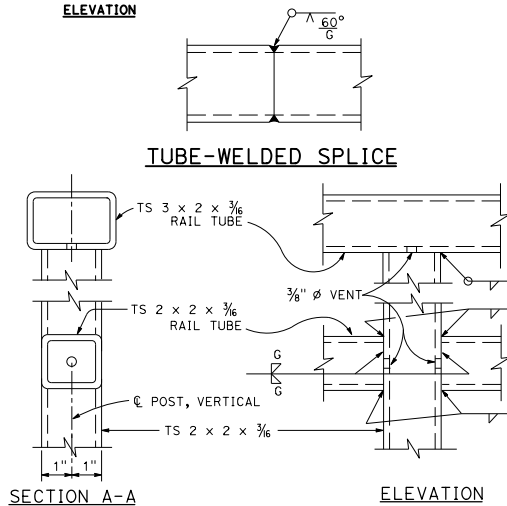
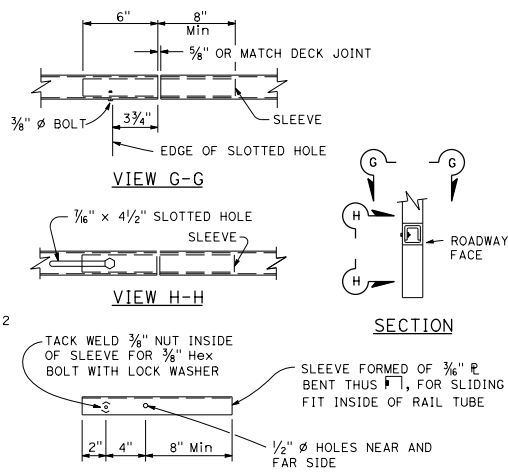
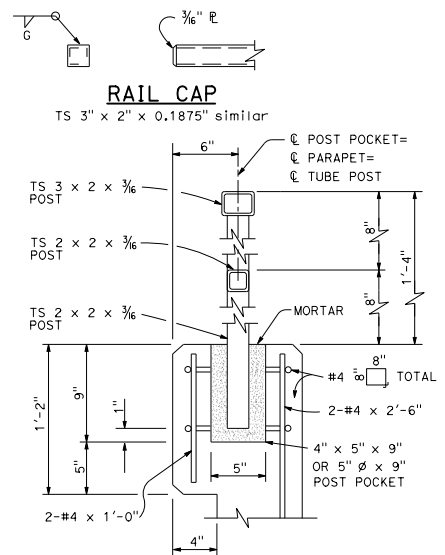
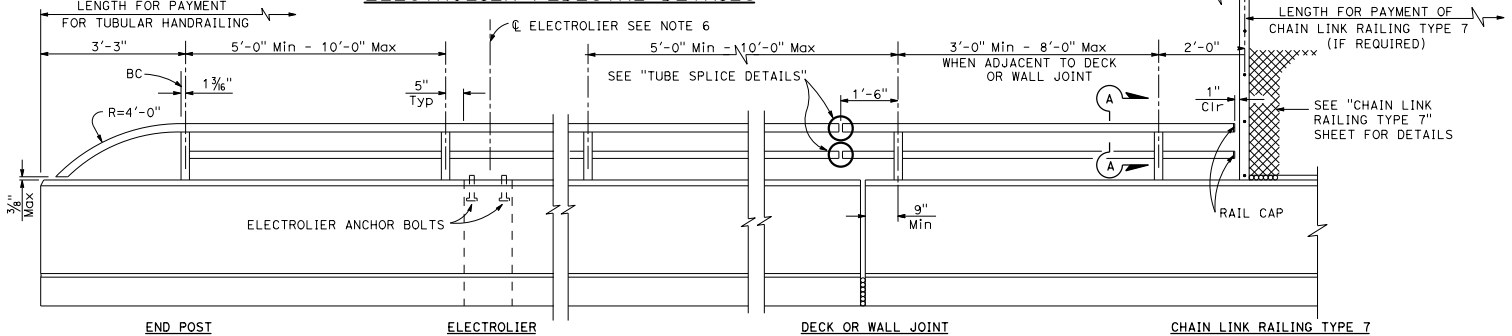
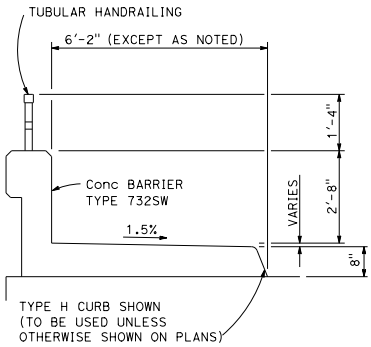
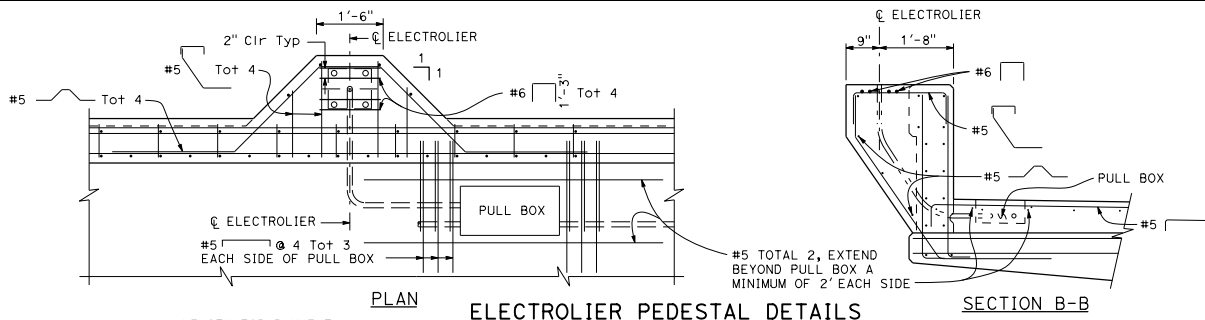


DIST	COUNTY	ROUTE	POST MILES TOTAL PROJECT	SHEET TOTAL SHEETS

REGISTERED CIVIL ENGINEER
Tillot Satter
No. C42892
PLANS APPROVAL DATE
January 20, 2017
EXP. 3-31-18
CIVIL
STATE OF CALIFORNIA

THE STATE OF CALIFORNIA OR ITS OFFICERS OR AGENTS SHALL NOT BE RESPONSIBLE FOR THE ACCURACY OR COMPLETENESS OF SCANNED COPIES OF THIS PLAN SHEET.



- NOTES:**
1. Post shall be normal to railing.
 2. Rail tubes shall be shop bent or fabricated to fit horizontal curve when radius is less than 950'.
 3. Tube splices shall be located in the tubes spanning deck or wall joints. Increase joint width in tubes to match expansion joint width and increase sleeve length correspondingly.
 4. Top rail tube shall be continuous over not less than two posts except a short post spacing is permitted near deck or wall joints, electroliers, or other rail discontinuities as noted.
 5. For details and reinforcement not shown see Revised Standard Plan RSP B11-54.
 6. For electrolier mounting details, see Revised Standard Plans RSP ES-6A and RSP ES-6B.

STATE OF CALIFORNIA
DEPARTMENT OF TRANSPORTATION
TUBULAR HANDRAILING

NO SCALE

RSP B11-51 DATED JANUARY 20, 2017 SUPERSEDES RSP B11-51 DATED JULY 15, 2016 AND STANDARD PLAN B11-51 DATED OCTOBER 30, 2015 - PAGE 312 OF THE STANDARD PLANS BOOK DATED 2015.

REVISED STANDARD PLAN RSP B11-51

2015 REVISED STANDARD PLAN RSP B11-51