

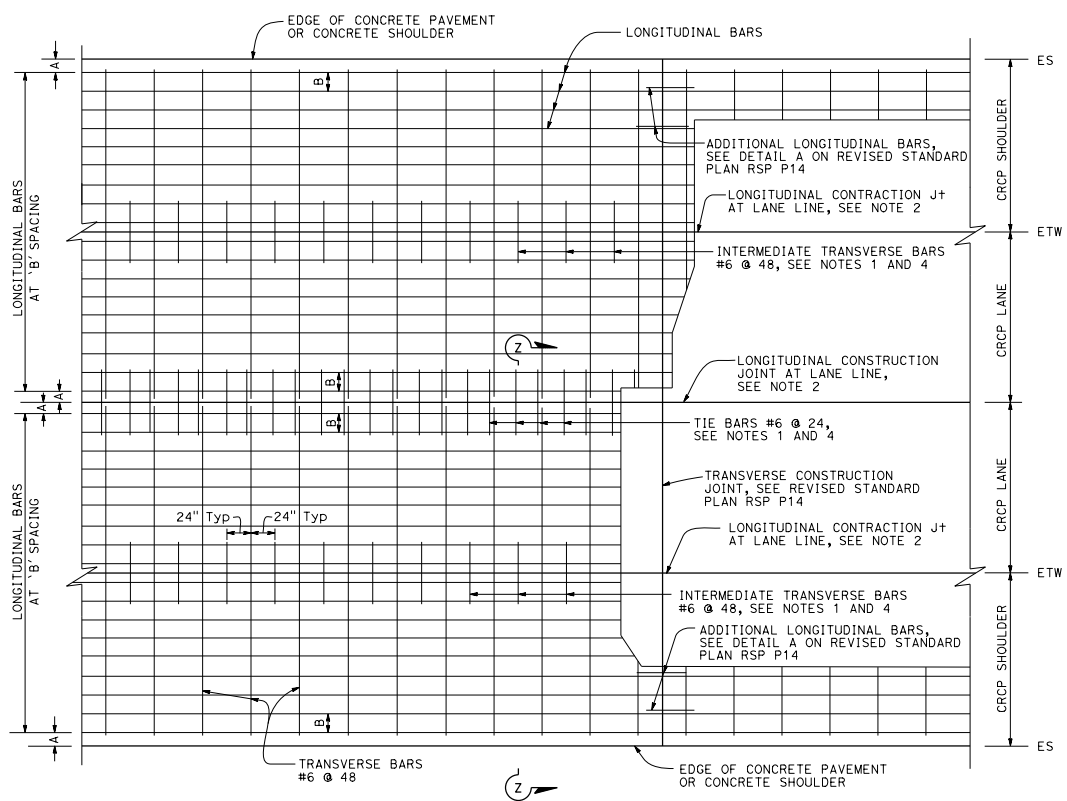
D16+	COUNTY	ROUTE	POST MILES TOTAL PROJECT	SHEET TOTAL NO. SHEETS

Flornie E. Bartlett
 REGISTERED CIVIL ENGINEER
 No. 054859
 Exp. 6-30-18
 CIVIL
 STATE OF CALIFORNIA

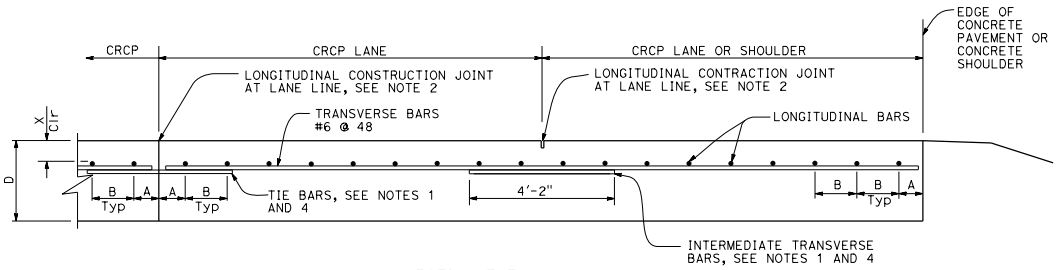
January 20, 2017
 PLANS APPROVAL DATE
 THE STATE OF CALIFORNIA OR ITS OFFICERS OR AGENTS SHALL NOT BE RESPONSIBLE FOR THE ACCURACY OR COMPLETENESS OF SCANNED COPIES OF THIS PLAN SHEET.

TO ACCOMPANY PLANS DATED _____

2015 REVISED STANDARD PLAN RSP P4



PLAN
See Note 3



SECTION Z-Z

TABLE No. 1 LONGITUDINAL BAR REINFORCEMENT

SLAB THICKNESS AND BAR SIZE		FIRST SPACING AT EDGE OR JOINT	REGULAR BARS	ADDITIONAL BARS AT TRANSVERSE CONSTRUCTION JOINT	Clr
D	BAR SIZE	SPACING A	SPACING B	SPACING 2 x B	X
.75'	#6	3" TO 4"	8.0"	16"	4"
.80'	#6	3" TO 4"	7.5"	15"	4"
.85'	#6	3" TO 4"	7.0"	14"	4"
.90'	#6	3" TO 4"	6.5"	13"	4"
.95'	#6	3" TO 4"	6.25"	12.5"	4"
1.00'	#6	3" TO 4"	6.0"	12"	5"
1.05'	#6	3" TO 4"	5.75"	11.5"	5"
1.10'	#6	3" TO 4"	5.5"	11"	5.5"

NOTES:

1. Place tie bars and intermediate transverse bars parallel to and in the same plane as transverse bars.
2. For longitudinal contraction and construction joint details, see Revised Standard Plan RSP P16.
3. For curved lane layout see Revised Standard Plan RSP P16.
4. For tie bar and intermediate transverse bar details, see Revised Standard Plan RSP P16.

ABBREVIATION:

D = Thickness of CRCP

STATE OF CALIFORNIA
DEPARTMENT OF TRANSPORTATION
**CONTINUOUSLY REINFORCED
CONCRETE PAVEMENT**

NO SCALE

RSP P4 DATED JANUARY 20, 2017 SUPERSEDES STANDARD PLAN P4
DATED OCTOBER 30, 2015 - PAGE 135 OF THE STANDARD PLANS BOOK DATED 2015.
REVISED STANDARD PLAN RSP P4