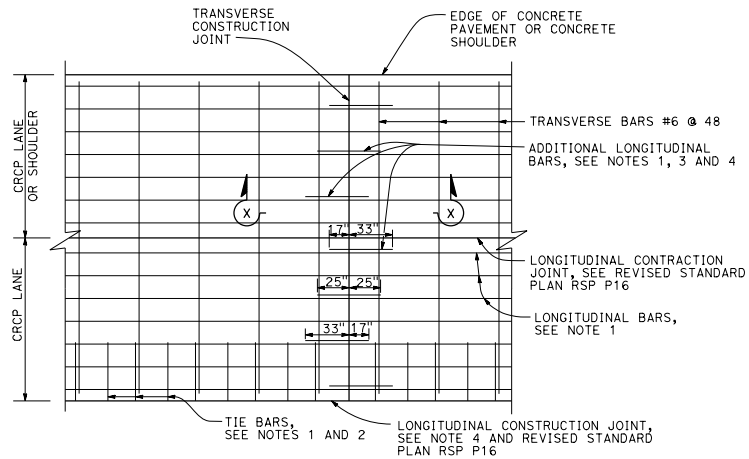


NOTES:

1. For longitudinal bar size, spacing and clearances, see Table 1 on Revised Standard Plan RSP P4.
2. For tie bars in longitudinal construction joint, see Revised Standard Plan RSP P16.
3. Place additional longitudinal bars parallel to and in the same plane as the longitudinal bars.
4. Place additional longitudinal bars symmetrically about longitudinal construction joint.

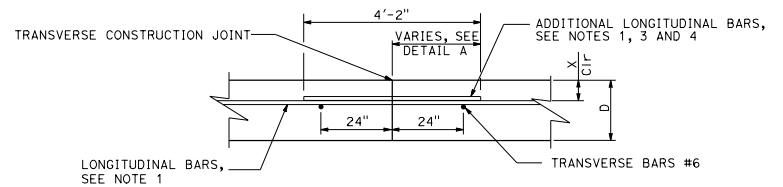
ABBREVIATION

D = Thickness of CRCP



DETAIL A

Additional longitudinal bars at transverse construction joint



**SECTION X-X
TRANSVERSE CONSTRUCTION JOINT**

STATE OF CALIFORNIA
DEPARTMENT OF TRANSPORTATION
**CONTINUOUSLY REINFORCED
CONCRETE PAVEMENT
TRANSVERSE CONSTRUCTION JOINT**

NO SCALE

RSP P14 DATED JANUARY 20, 2017 SUPERSEDES STANDARD PLAN P14
DATED OCTOBER 30, 2015 - PAGE 144 OF THE STANDARD PLANS BOOK DATED 2015.

REVISED STANDARD PLAN RSP P14

DIST	COUNTY	ROUTE	POST MILES TOTAL PROJECT	SHEET NO.	TOTAL SHEETS

Flornie E. Bartolotta
 REGISTERED CIVIL ENGINEER
 No. CS4859
 EXP. 6-30-18
 CIVIL
 STATE OF CALIFORNIA

January 20, 2017
 PLANS APPROVAL DATE
 THE STATE OF CALIFORNIA OR ITS OFFICERS
 OR AGENTS SHALL NOT BE RESPONSIBLE FOR
 THE ACCURACY OR COMPLETENESS OF SCANNED
 COPIES OF THIS PLAN SHEET.

TO ACCOMPANY PLANS DATED _____

2015 REVISED STANDARD PLAN RSP P14