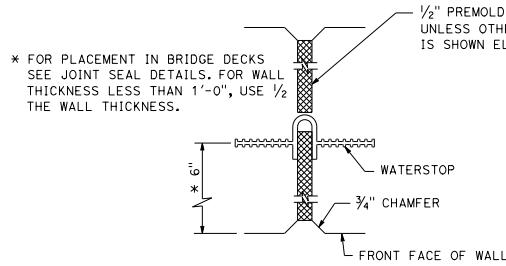
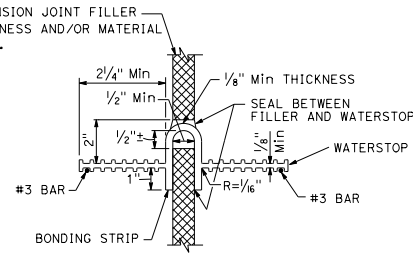


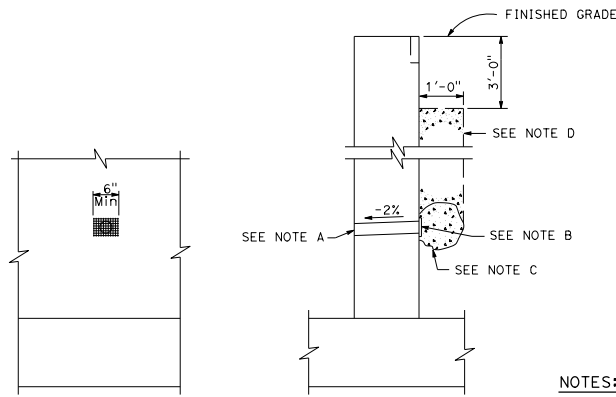
**BRIDGE DETAIL 3-5**  
**8" PSP AND PERMEABLE MATERIAL**



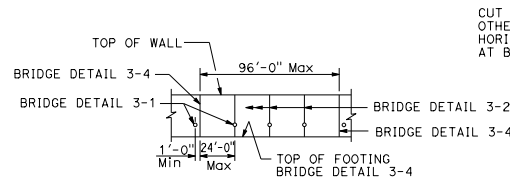
**BRIDGE DETAIL 3-4**  
**WALL EXPANSION JOINT**



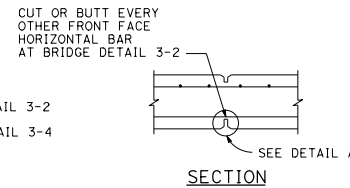
**BRIDGE DETAIL 3-6**  
**WATERSTOP**



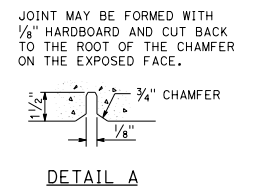
**ELEVATION**  
**SECTION**  
**BRIDGE DETAIL 3-1**  
**WEEP HOLE AND PERVIOUS BACKFILL**



**BRIDGE DETAIL 3-3**  
**WALL EXPANSION JOINTS**  
**AND WEAKENED PLANES**



**SECTION**  
**BRIDGE DETAIL 3-2**



**DETAIL A**  
**BRIDGE DETAIL 3-2**

**WEAKENED PLANES**

**NOTES:**

- A. 4"  $\varnothing$  Drains @ 25'-0" maximum center to center. For walls adjacent to sidewalks or curbs, provide 4" plastic pipe under the sidewalk to discharge thru curb face. Exposed wall drains shall be located 3' $\pm$  above finished grade.
- B. 6" square aluminum or galvanized steel wire 1/4" mesh hardware cloth, minimum wire diameter 0.025". Anchor firmly to backface.
- C. One cubic foot pervious backfill material in a nonwoven filter fabric, securely tied.
- D. Pervious backfill material continuous behind retaining wall or abutment.

STATE OF CALIFORNIA  
DEPARTMENT OF TRANSPORTATION  
**BRIDGE DETAILS**

NO SCALE

RSP B0-3 DATED JULY 21, 2017 SUPERSEDES STANDARD PLAN B0-3  
DATED OCTOBER 30, 2015 - PAGE 277 OF THE STANDARD PLANS BOOK DATED 2015.

**REVISED STANDARD PLAN RSP B0-3**

| DIST | COUNTY | ROUTE | POST MILES TOTAL PROJECT | SHEET No. | TOTAL SHEETS |
|------|--------|-------|--------------------------|-----------|--------------|
|      |        |       |                          |           |              |

*Gary Wong*  
REGISTERED CIVIL ENGINEER

July 21, 2017  
PLANS APPROVAL DATE

THE STATE OF CALIFORNIA OR ITS OFFICERS OR AGENTS SHALL NOT BE RESPONSIBLE FOR THE ACCURACY OR COMPLETENESS OF SCANNED COPIES OF THIS PLAN SHEET.

TO ACCOMPANY PLANS DATED \_\_\_\_\_

**NOTES:**

1. Holes will be permitted in the outer 1/2" of the web for wire, rings, etc. Tie web to #3 reinforcing bars @ 12 maximum intervals to support the waterstop in proper position during concrete placement. Alternative detail may be submitted for approval of the Engineer.
2. Waterstop to have 5 or more pairs of raised ribs to provide 0.1 square inch minimum rib cross-section area on each half of the waterstop.

2015 REVISED STANDARD PLAN RSP B0-3