

PLAN

LEGEND:

--- Indicates Existing Structure

* - All approach slab reinforcement shall be epoxy coated and top mat cover $2\frac{1}{2}$ " clear in Freeze-Thaw Area.

NOTES:

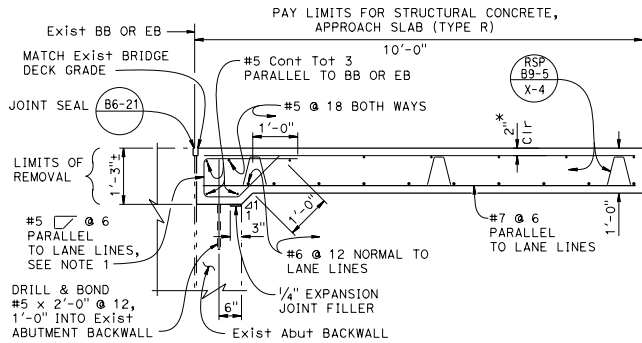
1. For MR $\le 2'$, adjust reinforcement to clear sawcut for sealed joint. For MR $> 2'$, reinforcement must be normal to BB or EB and spaced to avoid joint seal assembly anchorage.
2. Space reinforcement and abutment ties to avoid existing prestressing anchorages and other reinforcement in abutment, as needed.
3. At the Contractor's option, approach slab transverse reinforcement may be placed parallel to BB or EB. Spacing of transverse reinforcement is measured along ϕ roadway.
4. Paving notch extension is required if existing diaphragm paving notch is $< 6'$.
5. For details not shown, refer to Revised Standard Plan RSP B9-5.

DIST	COUNTY	ROUTE	POST MILES TOTAL PROJECT	SHEET NO.	TOTAL SHEETS

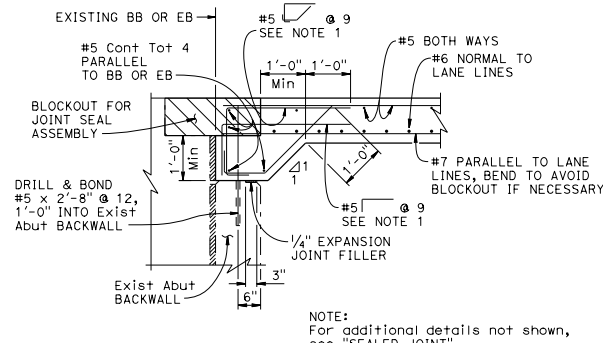
REGISTERED CIVIL ENGINEER
C.J. Sims
 No. C46471
 Exp. 6-30-19
 CIVIL
 STATE OF CALIFORNIA

July 21, 2017
 PLANS APPROVAL DATE
 THE STATE OF CALIFORNIA OR ITS OFFICERS OR AGENTS SHALL NOT BE RESPONSIBLE FOR THE ACCURACY OR COMPLETENESS OF SCANNED COPIES OF THIS PLAN SHEET.

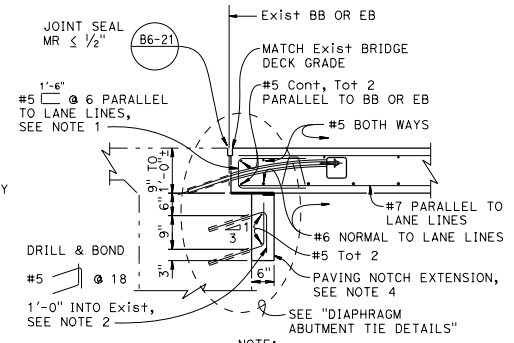
TO ACCOMPANY PLANS DATED _____



SEATED JOINT



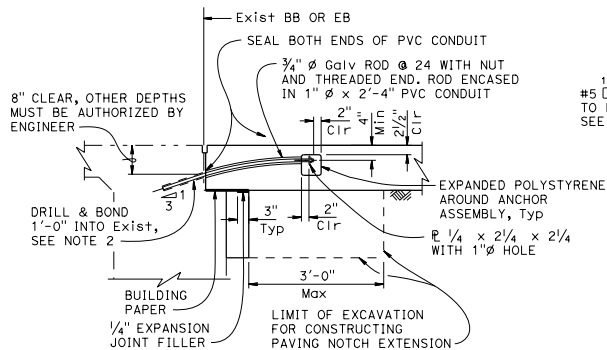
JOINT SEAL ASSEMBLY



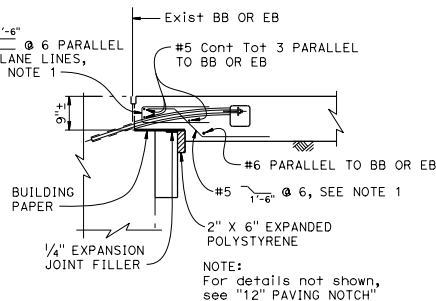
EXISTING DIAPHRAGM ABUTMENT

EXISTING SEAT ABUTMENT

SECTION A-A



12" PAVING NOTCH



9" PAVING NOTCH

DIAPHRAGM ABUTMENT TIE DETAILS

STATE OF CALIFORNIA
DEPARTMENT OF TRANSPORTATION
**STRUCTURE APPROACH
TYPE R (10)**
NO SCALE

RSP B9-3 DATED JULY 21, 2017 SUPPLEMENTS THE STANDARD PLANS BOOK DATED 2015.

REVISED STANDARD PLAN RSP B9-3

2015 REVISED STANDARD PLAN RSP B9-3