
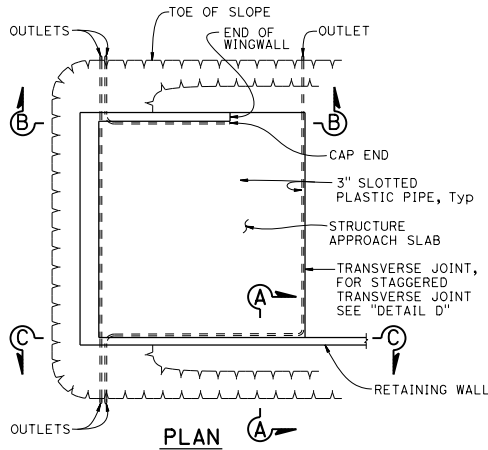


Dist	COUNTY	ROUTE	POST MILES TOTAL PROJECT	SHEET NO.	TOTAL SHEETS

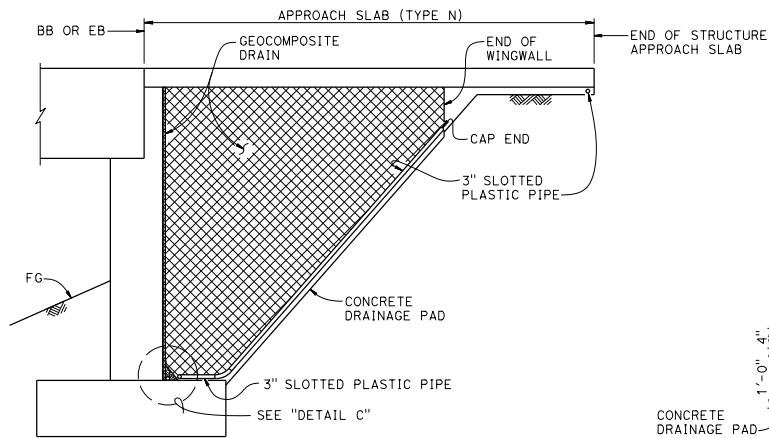


 REGISTERED CIVIL ENGINEER
 July 21, 2017
 PLANS APPROVAL DATE
 THE STATE OF CALIFORNIA OR ITS OFFICERS
 OR AGENTS SHALL NOT BE RESPONSIBLE FOR
 THE ACCURACY OR COMPLETENESS OF SCANNED
 COPIES OF THIS PLAN SHEET.

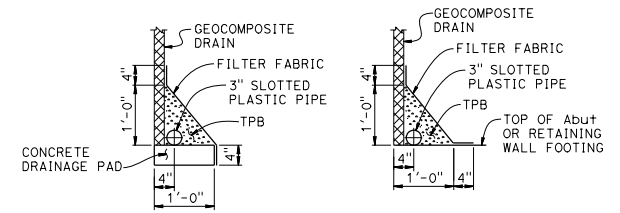
TO ACCOMPANY PLANS DATED _____



PLAN



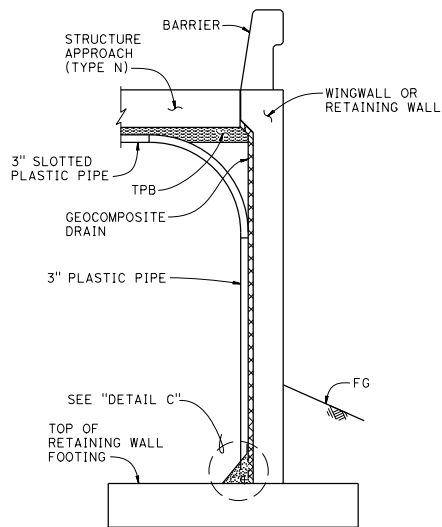
SECTION B-B



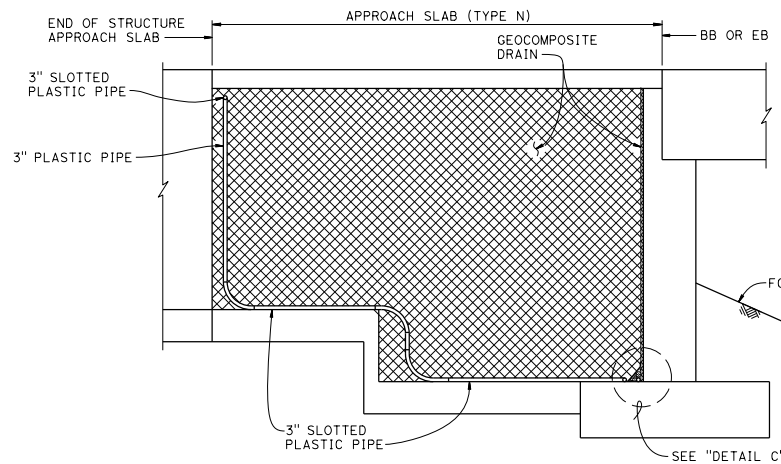
DRAINAGE PAD

FOOTING

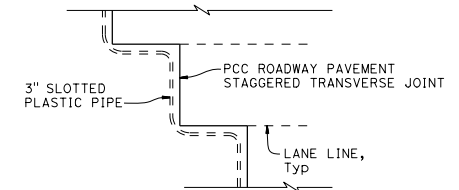
DETAIL C



SECTION A-A



SECTION C-C



DETAIL D

NOTES:

1. All bends in plastic pipe must have 3'-0" minimum radius. Plastic pipe used for bends is not required to be slotted.
2. For Approach Slab (Type N) details, refer to Revised Standard Plan RSP B9-1.

STATE OF CALIFORNIA
DEPARTMENT OF TRANSPORTATION
**STRUCTURE APPROACH
DRAINAGE DETAILS**
NO SCALE

RSP B9-6 DATED JULY 21, 2017. SUPPLEMENTS THE STANDARD PLANS BOOK DATED 2015.

REVISED STANDARD PLAN RSP B9-6

2015 REVISED STANDARD PLAN RSP B9-6