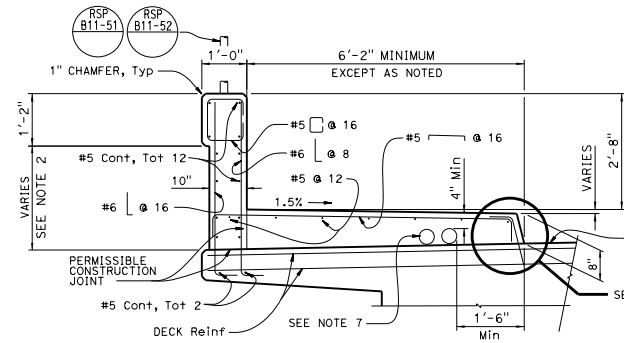
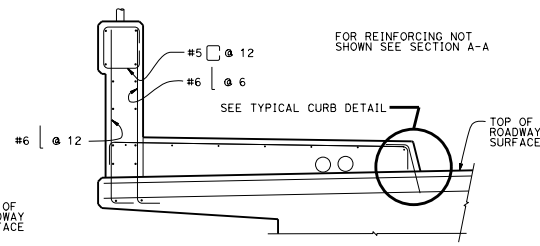


DIST	COUNTY	ROUTE	POST MILES TOTAL PROJECT	SHEET TOTAL SHEETS

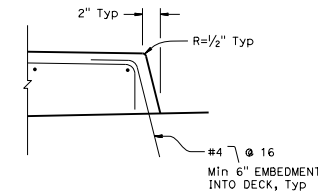
REGISTERED CIVIL ENGINEER	
Tillot Satter	
No. C42892	
PLANS APPROVAL DATE	
July 21, 2017	
EXP. 3-31-18	
CIVIL	
STATE OF CALIFORNIA	



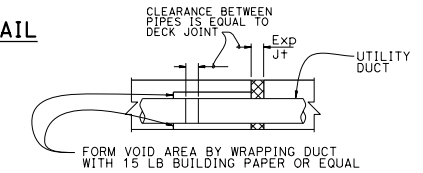
SECTION A-A
TYPICAL SECTION ON DECK



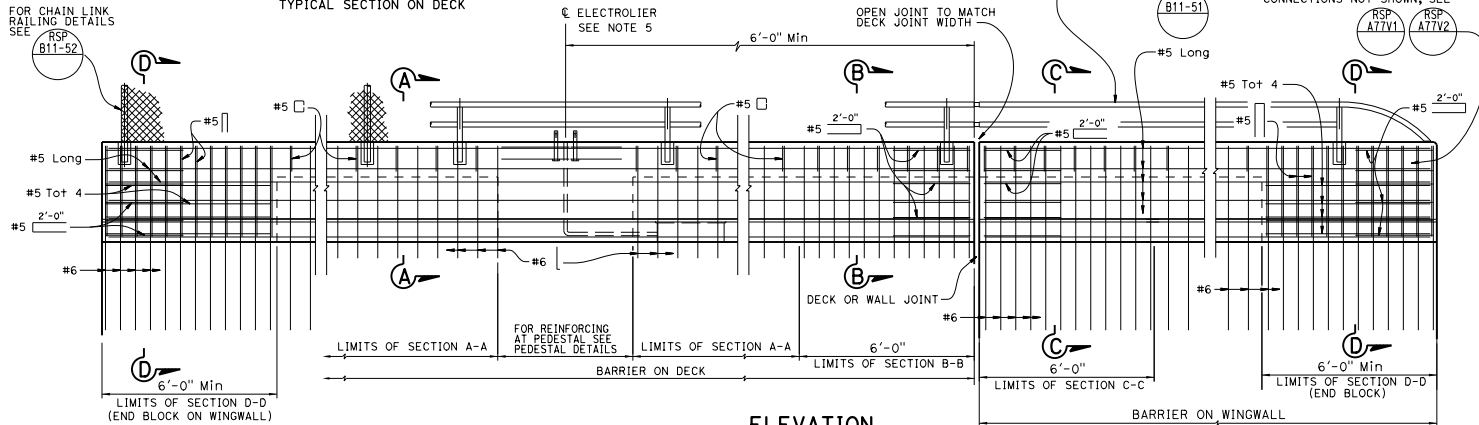
SECTION B-B
TYPICAL SECTION AT JOINTS



TYPICAL CURB DETAIL



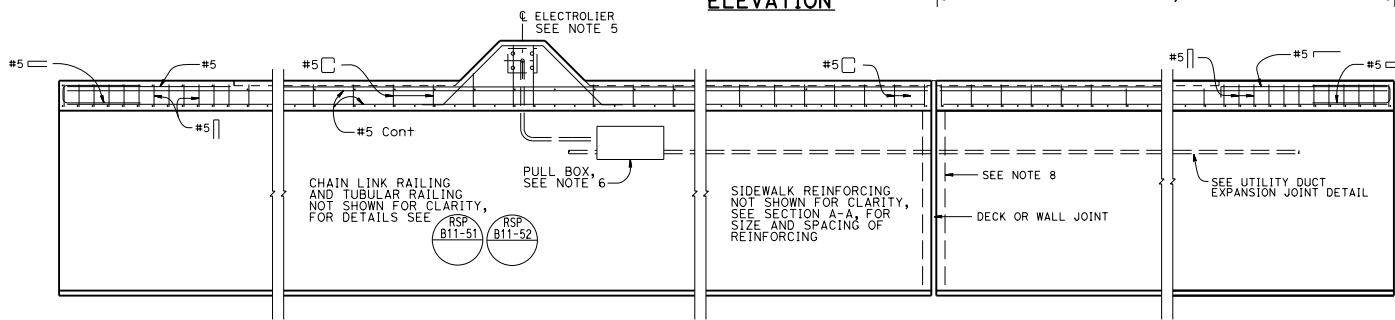
UTILITY DUCT EXPANSION JOINT



ELEVATION

NOTES:

1. This barrier is to be used only for posted speeds of 45 MPH or less. For speeds greater than 45 MPH, pedestrians must be protected by a separation traffic barrier.
2. Dimensions will vary with cross slope and surfacing thickness. See Project Plans.
3. Walls must be backfilled before curb and parapet is placed.
4. Clearance to reinforcing steel in curb and railing is 2" except as noted. Longitudinal reinforcement to stop at all expansion joints.
5. See Project Plans for electrolier locations and pull box type.
6. For electrical details, see Standard Plans ES-9A, ES-9B, Revised Standard Plans RSP ES-9C, RSP ES-9D, and RSP ES-9E.
7. A minimum of two - 4" round openings for future utilities. A maximum six - 4" round openings for a 6'-2" sidewalk. One - 4" round opening can be added for each additional 1'-0" of sidewalk width. Utility opening must be a minimum of 6" from face of barrier parapet. Openings are to be sealed at ends and extended 8" minimum past end of sidewalk if not used. Duct forms are to be tied down. For exact number and placement of utility openings see other details. Minimum 2" clear between conduits.
8. See Project Plans for "Joint Armor For Pedestrian Walkways" details.
9. Tubular hand railing and chain link railing continuous at pedestal.
10. For details and reinforcement not shown, see Revised Standard Plan RSP B11-59.



PLAN

STATE OF CALIFORNIA
DEPARTMENT OF TRANSPORTATION
CONCRETE BARRIER
TYPE 732SW
(SHEET 1 OF 2)

NO SCALE

RSP B11-58 DATED JULY 21, 2017 SUPERSEDES RSP B11-58 DATED JANUARY 20, 2017 THAT SUPPLEMENTS THE STANDARD PLANS BOOK DATED 2015.

REVISED STANDARD PLAN RSP B11-58

2015 REVISED STANDARD PLAN RSP B11-58