

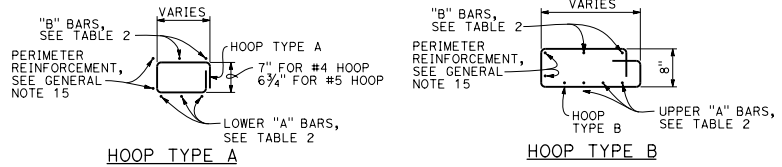


| | | | | | |
|---|--------|-------|-----------------------------|--------------|-----------------|
| Dist# | COUNTY | ROUTE | POST MILES TOTAL PROJECT | SHEET No. | TOTAL SHEETS |
| | | | | | |
|  REGISTERED CIVIL ENGINEER | | | | | |
| July 21, 2017 PLANS APPROVAL DATE | | | | | |
|  | | | | | |
| THE STATE OF CALIFORNIA OR ITS OFFICERS OR AGENTS SHALL NOT BE RESPONSIBLE FOR THE ACCURACY OR COMPLETENESS OF SCANNED COPIES OF THIS PLAN SHEET. | | | | | |

TO ACCOMPANY PLANS DATED _____



NOTES:

1. See Revised Standard Plan RSP D72F for General Notes and additional details. See Revised Standard Plan RSP D72G for tables and quantities.
2. Type G4 inlet can use Grate Type 18 or 24. Type G2 inlet uses Grate Type 24.
3. Type G4 inlet details are similar to Type G2 inlet details, except for the addition of a curb and sloped grate to match the adjacent curb and gutter depression.
4. Dimension will vary with different grates, curb types, box width and wall thickness.

| TABLE 2 - TOP SLAB REINFORCEMENT | | |
|----------------------------------|-------------------------|-------------------------|
| 16 BAR DIAMETERS | "A" & "B" BARS | |
| | VARIES | |
| | W/ CURB | W/O CURB |
| "A" BARS | #4 @ 5 (2 BARS Min) | #5 @ 5 (3 BARS Min) |
| "B" BARS | #4 @ 10 (2 BARS Min) | #4 @ 12 (2 BARS Min) |
| HOOPS ("A" & "B") | #4 @ 5 | #5 @ 5 |

ROTATE "A" AND "B" BARS SO HOOKED ENDS WILL MAINTAIN 2" CLEAR COVERAGE.

STATE OF CALIFORNIA
DEPARTMENT OF TRANSPORTATION
CIP DRAINAGE INLETS
TYPES G1, G2, G3,
G4, G5 AND G6
NO SCALE

RSP D72C DATED JULY 21, 2017 SUPERSEDES RSP D72C DATED JULY 15, 2016 THAT SUPPLEMENTS THE STANDARD PLANS BOOK DATED 2015.
REVISED STANDARD PLAN RSP D72C

2015 REVISED STANDARD PLAN RSP D72C