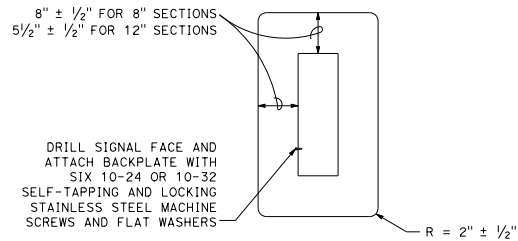
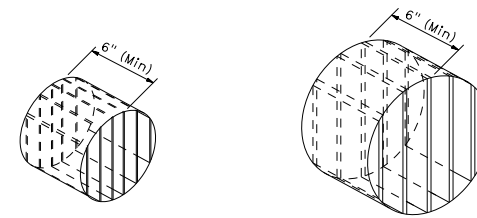


**VISORS**



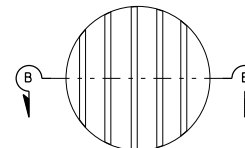
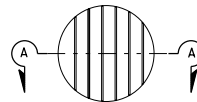
8" AND 12" SECTIONS

**BACKPLATE**



ISOMETRIC VIEW

ISOMETRIC VIEW



**DIRECTIONAL LOUVER**

Directional louvers shall be oriented and secured in place with one plated brass machine screw and nut.

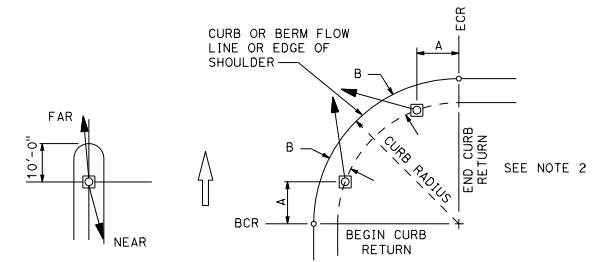
DIST	COUNTY	ROUTE	POST MILES TOTAL PROJECT	SHEET NO.	TOTAL SHEETS

REGISTERED ELECTRICAL ENGINEER  
No. E15636  
Exp. 12-31-17  
ELECTRICAL  
STATE OF CALIFORNIA

July 21, 2017  
PLANS APPROVAL DATE

THE STATE OF CALIFORNIA OR ITS OFFICERS OR AGENTS SHALL NOT BE RESPONSIBLE FOR THE ACCURACY OR COMPLETENESS OF SCANNED COPIES OF THIS PLAN SHEET.

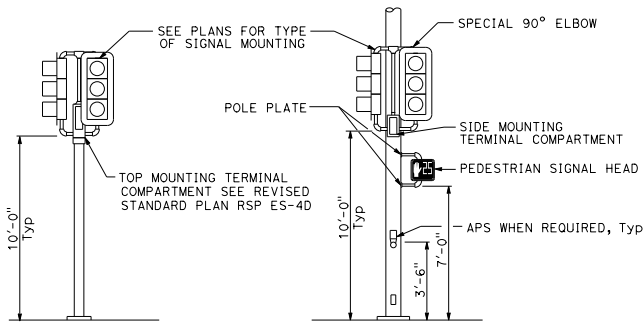
TO ACCOMPANY PLANS DATED \_\_\_\_\_



**NOTES:**

1. Typical signal pole placement unless dimensioned on plans.
2. For A and B dimensions, see Pole Schedule.

**SIGNAL STANDARD PLACEMENT DIMENSIONS AND EQUIPMENT LOCATIONS**

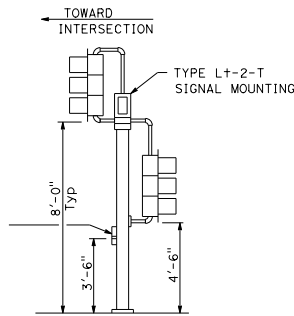


**TOP MOUNTED SIGNALS (TV)**

Type 1-A, 1-B, 1-C and 1-D standard as indicated on the plans

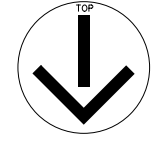
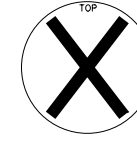
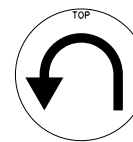
**SIDE MOUNTED SIGNALS (SV AND SP)**

Normally used on standards with luminaire or signal mast arm



**LEFT TURN LANE SIGNAL**

Type 1-A, 1-B, 1-C and 1-D standard as indicated on plans



**SIGNAL FACES**

STATE OF CALIFORNIA  
DEPARTMENT OF TRANSPORTATION

**ELECTRICAL SYSTEMS (SIGNAL HEADS AND MOUNTINGS)**

NO SCALE

RSP ES-4C DATED JULY 21, 2017 SUPERSEDES STANDARD PLAN ES-4C DATED OCTOBER 30, 2015 - PAGE 442 OF THE STANDARD PLANS BOOK DATED 2015.

**REVISED STANDARD PLAN RSP ES-4C**

2015 REVISED STANDARD PLAN RSP ES-4C