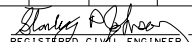
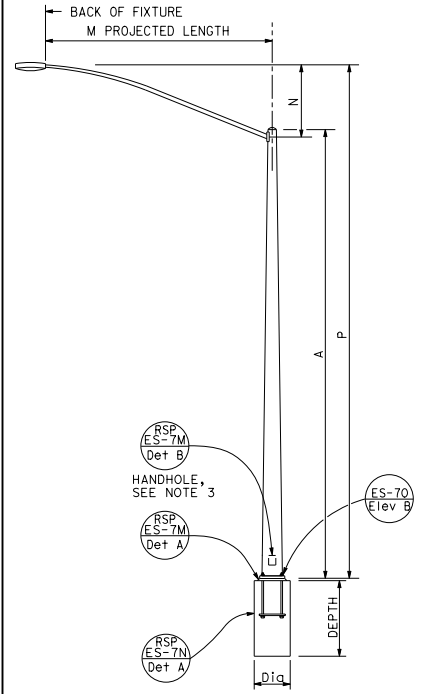


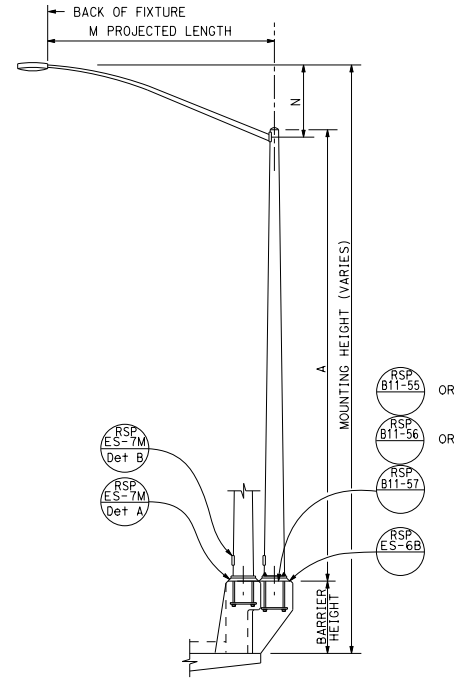
DIST	COUNTY	ROUTE	POST MILES TOTAL PROJECT	SHEET NO.	TOTAL SHEETS

  
 REGISTERED CIVIL ENGINEER  
 No. 051793  
 Exp. 3-31-18  
 CIVIL

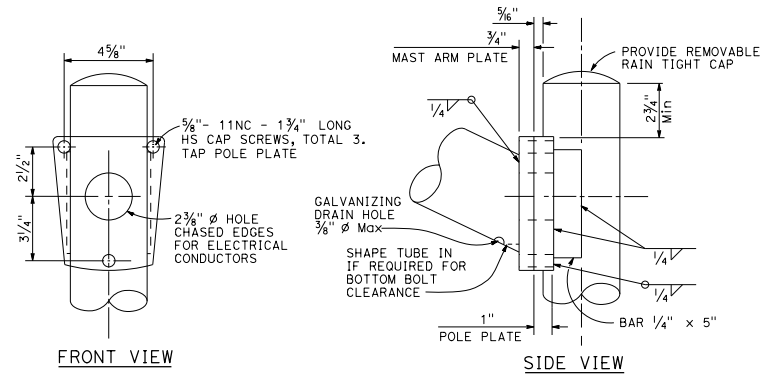
July 21, 2017  
 PLANS APPROVAL DATE  
 THE STATE OF CALIFORNIA OR ITS OFFICERS OR AGENTS SHALL NOT BE RESPONSIBLE FOR THE ACCURACY OR COMPLETENESS OF SCANNED COPIES OF THIS PLAN SHEET.



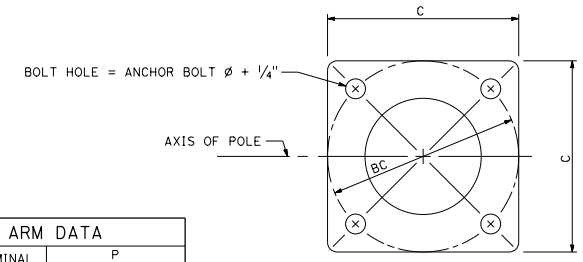
**TYPE 15 AND TYPE 21**  
ELEVATION A



**TYPE 15 AND TYPE 21 BARRIER RAIL MOUNTED**  
ELEVATION B



**LUMINAIRE MAST ARM CONNECTION**  
DETAIL R



**BASE PLATE**  
DETAIL A

POLE TYPE	POLE DATA				BASE PLATE DATA				CIDH PILE FOUNDATION	
	A HEIGHT	Min OD		WALL THICKNESS	C	BC = BOLT CIRCLE	THICKNESS	ANCHOR BOLT SIZE	DiA	DEPTH
15	30'-0"	8"	3 1/8"	0.1196"	1'-0"	1'-0"	1 1/2"	1" ø x 36" *	2'-6"	6'-0"
21	35'-0"	8 5/8"	3 3/8"	0.1793"			2"	1 1/4" ø x 36" *		7'-0"

\* FOR BARRIER RAIL BOLTS, SEE REVISED STANDARD PLAN RSP ES-6B.

M PROJECTED LENGTH	N RISE	Min OD AT POLE	NOMINAL THICKNESS	P	
				TYPE 15	TYPE 21
6'-0"	2'-0" ±	3 1/4"	0.1196"	31'-6" ±	36'-6" ±
8'-0"	2'-6" ±	3 1/2"		32'-0" ±	37'-0" ±
10'-0"	3'-3" ±	3 3/8"		32'-9" ±	37'-9" ±
12'-0"	4'-3" ±			33'-9" ±	38'-9" ±
15'-0"	4'-9" ±	4 1/4"		34'-3" ±	39'-3" ±

**NOTES:**

- Indicates mast arm length to be used unless otherwise noted on the plans.
- For Type 15-SB, use Type 15 standard with Type 30 slip base plate details, see Standard Plan ES-6F.
- Handhole shall be located on the downstream side of traffic.
- For additional notes and details, see Revised Standard Plans RSP ES-7M and RSP ES-7N.

STATE OF CALIFORNIA  
DEPARTMENT OF TRANSPORTATION  
**ELECTRICAL SYSTEMS**  
**(LIGHTING STANDARD,**  
**TYPES 15 AND 21)**

NO SCALE

RSP ES-6A DATED JULY 21, 2017 SUPERSEDES RSP ES-6A DATED JULY 15, 2016 AND STANDARD PLAN ES-6A DATED OCTOBER 30, 2015 - PAGE 449 OF THE STANDARD PLANS BOOK DATED 2015.

**REVISED STANDARD PLAN RSP ES-6A**

2015 REVISED STANDARD PLAN RSP ES-6A