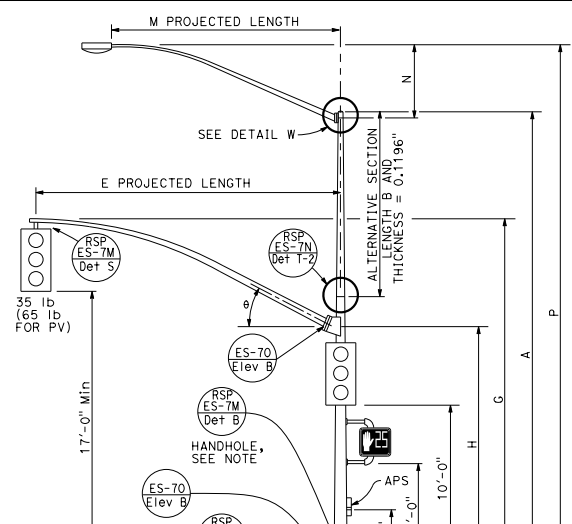
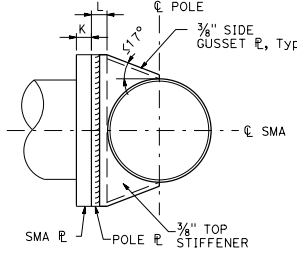


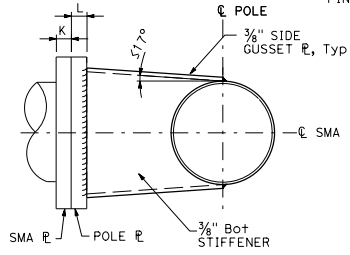
TYPE 16-1-100, 18-1-100
ELEVATION A



TYPE 19-1-100, 19A-1-100
ELEVATION B



SECTION B-B



SECTION C-C

E PROJECTED LENGTH	G MOUNTING HEIGHT	H	Min OD AT POLE	THICKNESS	I BOLT CIRCLE	HS CAP SCREWS	J PLATE SIZE	K MAST ARM R THICKNESS	L POLE R THICKNESS	θ
15'-0"	21'-8"±	17'-6"	7 3/8"	0.1793"	12"	1 1/4"-7NC-3"	1'-0"	1 1/4"	1 1/2"	23°
20'-0"	22'-8"±	16'-0"	8"							
25'-0"	22'-8"±	16'-0"	9"							
30'-0"	23'-0"±	16'-0"	10"							

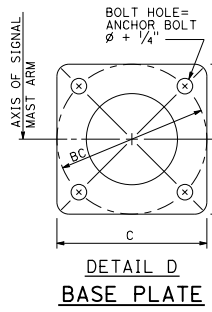
M PROJECTED LENGTH	N RISE	Min OD AT POLE	THICKNESS	P MOUNTING HEIGHT
6'-0"	2'-0"±	3 1/4"	0.1196"	30'-0" POLE
8'-0"	2'-6"±	3 1/2"		35'-0" POLE
10'-0"	3'-3"±	3 3/8"		31'-6"±
12'-0"	4'-3"±	3 7/8"		36'-6"±
15'-0"	4'-9"±	4 1/4"		32'-0"±
				37'-0"±
				32'-9"±
				37'-9"±
				33'-9"±
				38'-9"±
				34'-3"±
				39'-3"±

POLE TYPE	LOAD CASE	WIND VELOCITY (mph)	POLE DATA				BASE PLATE DATA				LUMINAIRE MAST ARM		SIGNAL MAST ARM		CIDH PILE FOUNDATION			
			A HEIGHT	Min OD		THICKNESS	ALTERNATIVE SECTION			C	BC = BOLT CIRCLE	THICKNESS	ANCHOR BOLT SIZE	LUMINAIRE MAST ARM	SIGNAL MAST ARM	Dia	DEPTH	
				BASE	TOP		B LENGTH	BOTTOM	TOP									
16-1-100	1	100	18'-6"	12"	9 3/8"	0.2391"	None			1'-6"	1'-4"	2"	1 3/4" ø x 42"	NONE	15'-0", [20'-0"]	3'-0"	9'-0"	
18-1-100			17'-0"	12"	9 3/8"	0.2391"	None			1'-6"	1'-4"	2"	1 3/4" ø x 42"	NONE	15'-0", [20'-0"]			
19-1-100			30'-0"	14"	9 3/4"	OR 0.25"	10'-0"	11 1/8"	9 3/4"	9"	1'-10"	1'-8"	2 1/2"	2" ø x 42"	6'-15" [12'-0"]			25'-0", [30'-0"]
19A-1-100			35'-0"	14"	9"	0.25"	15'-0"	11 1/8"	9"	9"	1'-10"	1'-8"	2 1/2"	2" ø x 42"	6'-15" [15'-0"]			25'-0", [30'-0"]

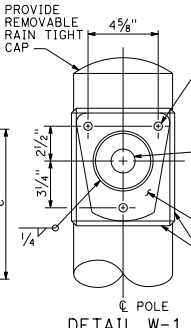
□ INDICATES MAST ARM LENGTH TO BE USED UNLESS OTHERWISE NOTED ON PLANS.

TO ACCOMPANY PLANS DATED _____

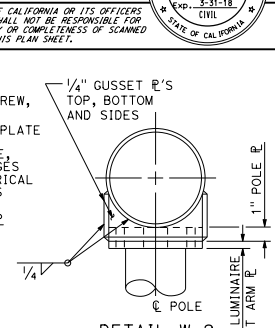
NOTE:
Handhole shall be located on the downstream side of traffic.



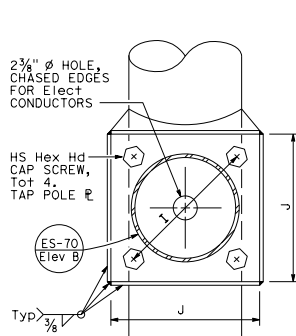
DETAIL D
BASE PLATE



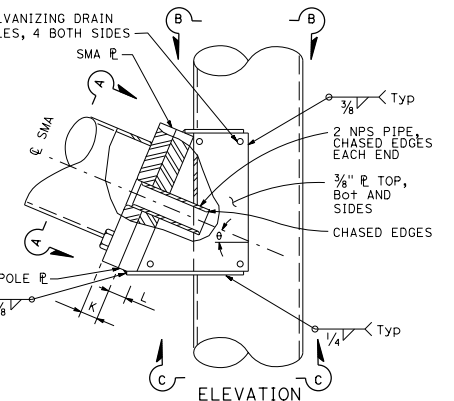
DETAIL W-1
LUMINAIRE MAST ARM CONNECTION



DETAIL W-2
MAST ARM CONNECTION



SECTION A-A



ELEVATION

SECTION A-A
SIGNAL MAST ARM CONNECTION
DETAIL A

STATE OF CALIFORNIA
DEPARTMENT OF TRANSPORTATION

ELECTRICAL SYSTEMS (SIGNAL AND LIGHTING STANDARD, CASE 1 SIGNAL MAST ARM LOADING, WIND VELOCITY = 100 MPH AND SIGNAL MAST ARM LENGTHS 15' TO 30')
NO SCALE

RSP ES-7C DATED JULY 21, 2017 SUPERSEDES RSP ES-7C DATED JULY 15, 2016 AND STANDARD PLAN ES-7C DATED OCTOBER 30, 2015 - PAGE 458 OF THE STANDARD PLANS BOOK DATED 2015.

REVISED STANDARD PLAN RSP ES-7C

2015 REVISED STANDARD PLAN RSP ES-7C

DIST	COUNTY	ROUTE	POST MILES TOTAL PROJECT	SHEET NO.	TOTAL SHEETS

Stanley P. Johnson
 REGISTERED CIVIL ENGINEER
 No. C61793
 CIVIL
 STATE OF CALIFORNIA

PLANS APPROVAL DATE
 July 21, 2017
 THE STATE OF CALIFORNIA OR ITS OFFICERS OR AGENTS SHALL NOT BE RESPONSIBLE FOR THE ACCURACY OR COMPLETENESS OF SCANNED COPIES OF THIS PLAN SHEET.