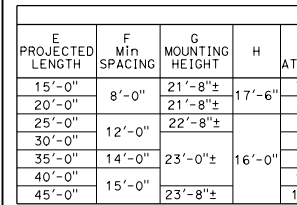
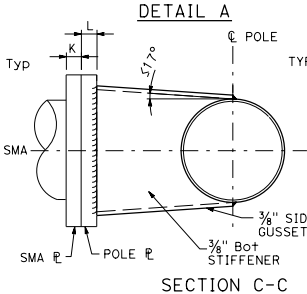
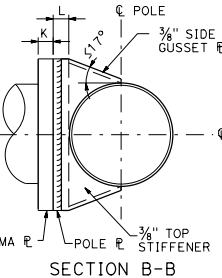


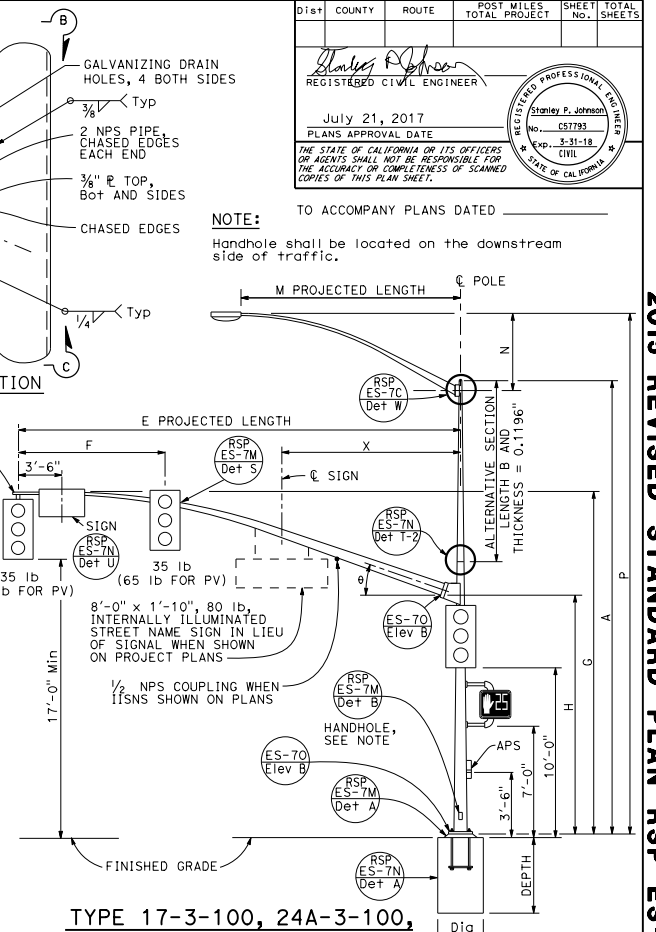
SIGNAL MAST ARM CONNECTION



TYPE 16-3-100, 18-3-100,
23-3-100, 27-3-100
ELEVATION A



SECTION C-C



TYPE 17-3-100, 24A-3-100,
19-3-100, 26A-3-100, 24-3-100
ELEVATION B

SIGNAL MAST ARM DATA												
E PROJECTED LENGTH	F Min SPACING	G MOUNTING HEIGHT	H	Min OD AT POLE	THICKNESS	I BOLT CIRCLE	HS CAP SCREWS	J PLATE SIZE	K MAST ARM THICKNESS	L POLE THICKNESS	θ	X Max
15'-0"	8'-0"	21'-8"±	17'-6"	7 7/8"	0.1793"	12"		1'-3"	1 1/4"	1 1/2"	23°	-
20'-0"		21'-8"±		7 3/8"								
25'-0"	12'-0"	22'-8"±		8"								
30'-0"		22'-8"±		8 3/4"	0.2391"		1 1/4"-7NC-3"					10'-6"
35'-0"	14'-0"	23'-0"±	16'-0"	9 3/8"					1 1/2"	1 3/4"	21°	
40'-0"		23'-0"±		9 3/8"								
45'-0"	15'-0"	23'-8"±		10 1/8"				1'-5"		1 5/8"	15°	13'-0"

LUMINAIRE MAST ARM DATA				
M PROJECTED LENGTH	N RISE	Min OD AT POLE	THICKNESS	P MOUNTING HEIGHT
6'-0"	2'-0"±	3 1/4"	0.1196"	30'-0" POLE 35'-0" POLE
8'-0"	2'-6"±	3 1/2"		32'-0"± 37'-0"±
10'-0"	3'-3"±	3 3/4"		32'-9"± 37'-9"±
12'-0"	4'-3"±	3 7/8"		33'-9"± 38'-9"±
15'-0"	4'-9"±	4 1/4"		34'-3"± 39'-3"±

POLE DATA				BASE PLATE DATA				LUMINAIRE MAST ARM		SIGNAL MAST ARM		CIDH PILE FOUNDATION		
POLE TYPE	LOAD CASE	WIND VELOCITY (mph)	A HEIGHT	Min OD	THICKNESS	ALTERNATIVE SECTION	C	ANCHOR BOLT SIZE	MIN	MAX	Min	MAX	Di	DEPTH
16-3-100			18'-6"	13 3/8"					NONE	15'-0"				
17-3-100			30'-0"	11 3/4"	0.2391" OR 0.25"	10'-0"	13 3/8"	11 3/4"	6'-15" [12'-0"]	20'-0"				
18-3-100			17'-0"	13 3/8"					NONE	25'-0"				
19-3-100			30'-0"	11 3/4"		10'-0"	13 3/8"	11 3/4"	6'-15" [12'-0"]	30'-0"				
19A-3-100			35'-0"	11"	0.3125"	15'-0"	13 3/8"	11"	6'-15" [15'-0"]					
23-3-100			17'-0"	13 3/8"	0.2391" OR 0.25"	10'-0"	13 3/8"	11 3/4"	NONE	35'-0"				
24-3-100			30'-0"	11 3/4"		10'-0"	13 3/8"	11 3/4"	6'-15" [12'-0"]	35'-0"				
24A-3-100			35'-0"	11"		15'-0"	13 3/8"	11"	6'-15" [15'-0"]					
26-3-100			30'-0"	13 3/4"	0.3125"	10'-0"	15 3/8"	13 3/4"	6'-15" [12'-0"]	40'-0"				
26A-3-100			35'-0"	13"		15'-0"	15 3/8"	13"	6'-15" [15'-0"]	45'-0"				
27-3-100			17'-0"	15 3/8"		15'-0"	15 3/8"	13"	NONE	45'-0"				

INDICATES MAST ARM LENGTH TO BE USED UNLESS OTHERWISE NOTED ON PLANS.

Dist	COUNTY	ROUTE	POST MILES TOTAL PROJECT	SHEET NO.	TOTAL SHEETS
------	--------	-------	--------------------------	-----------	--------------

Stanley P. Johnson
REGISTERED CIVIL ENGINEER
No. C61793
EXPIRES 3-31-18
CIVIL

July 21, 2017
PLANS APPROVAL DATE

THE STATE OF CALIFORNIA OR ITS OFFICERS OR AGENTS SHALL NOT BE RESPONSIBLE FOR THE ACCURACY OR COMPLETENESS OF SCANNED COPIES OF THIS PLAN SHEET.

TO ACCOMPANY PLANS DATED _____

NOTE:
Handhole shall be located on the downstream side of traffic.

STATE OF CALIFORNIA
DEPARTMENT OF TRANSPORTATION

**ELECTRICAL SYSTEMS
(SIGNAL AND LIGHTING STANDARD,
CASE 3 SIGNAL MAST ARM LOADING,
WIND VELOCITY=100 MPH AND SIGNAL
MAST ARM LENGTHS 15' TO 45')**

NO SCALE

RSP ES-7E DATED JULY 21, 2017 SUPERSEDES RSP ES-7E DATED JULY 15, 2016 AND STANDARD PLAN ES-7E DATED OCTOBER 30, 2015 - PAGE 460 OF THE STANDARD PLANS BOOK DATED 2015.

REVISED STANDARD PLAN RSP ES-7E

2015 REVISED STANDARD PLAN RSP ES-7E