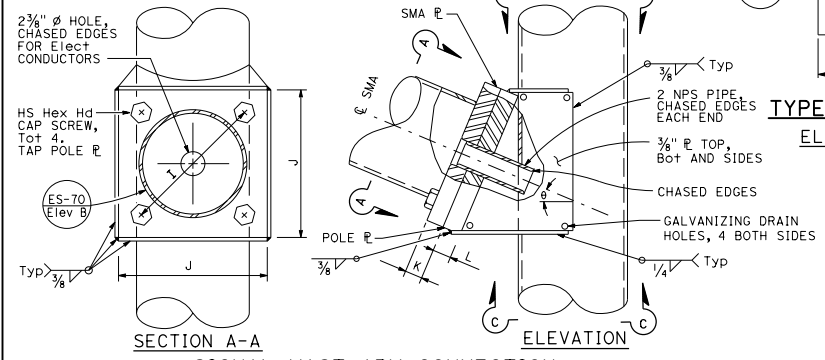
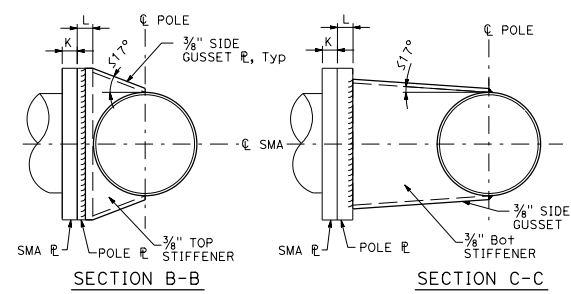


**BASE PLATE
DETAIL B**



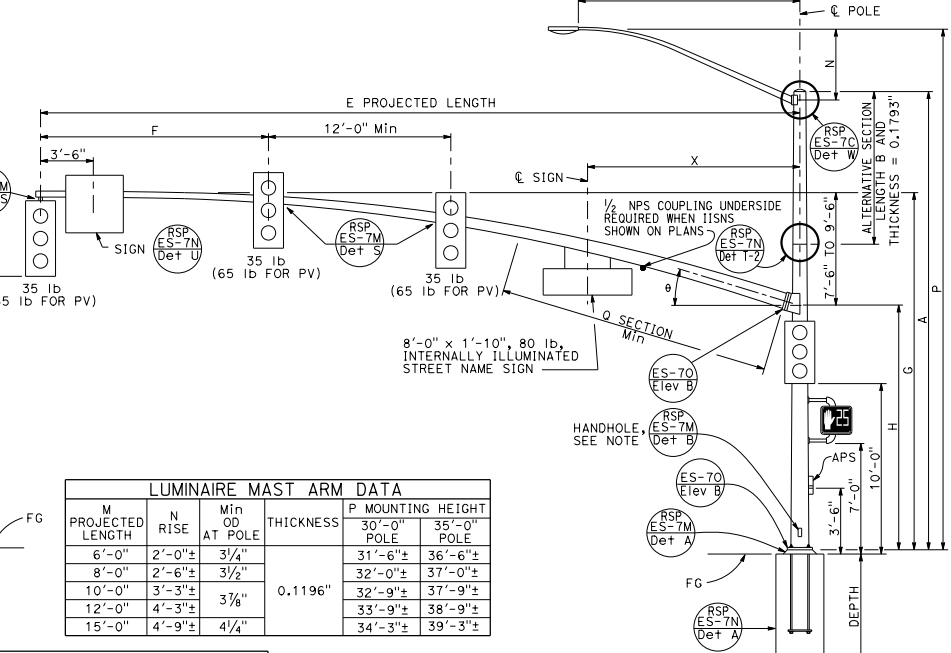
**SIGNAL MAST ARM CONNECTION
DETAIL A**

**TYPE 28-5-100
ELEVATION A**



SECTION B-B

SECTION C-C



**TYPE 29-5-100, 29A-5-100
ELEVATION B**

LUMINAIRE MAST ARM DATA					
M PROJECTED LENGTH	N RISE	Min OD AT POLE	THICKNESS	P MOUNTING HEIGHT	
				30'-0" POLE	35'-0" POLE
6'-0"	2'-0"±	3 1/4"	0.1196"	31'-6"±	36'-6"±
8'-0"	2'-6"±	3 1/2"		32'-0"±	37'-0"±
10'-0"	3'-3"±	3 3/4"		32'-9"±	37'-9"±
12'-0"	4'-3"±	3 7/8"		33'-9"±	38'-9"±
15'-0"	4'-9"±	4 1/4"		34'-3"±	39'-3"±

SIGNAL MAST ARM DATA													
E PROJECTED LENGTH	F Min SPACING	G MOUNTING HEIGHT	H	Min OD AT POLE	THICKNESS	I BOLT CIRCLE	J HS CAP SCREWS	K PLATE SIZE	L MAST ARM THICKNESS	θ	Q SECTION LENGTH THICKNESS	X Max	
50'-0" 55'-0"	15'-0"	23'-7 1/2" TO 25'-7 1/2"±	16'-0"	11 1/8" 1'-1/4"	0.1793"	16"	1 1/2"-6NC-3/4"	1'-9"	1 3/4"	15°	18'-0" 23'-0"	0.2391"	14'-0"

POLE TYPE	LOAD CASE	WIND VELOCITY (mph)	POLE DATA				BASE PLATE DATA				LUMINAIRE MAST ARM	SIGNAL MAST ARM	CIDH PILE FOUNDATION			
			A HEIGHT	Min OD BASE	Min OD TOP	THICKNESS	ALTERNATIVE SECTION B LENGTH	TOP	C	BC = BOLT CIRCLE			THICKNESS	ANCHOR BOLT SIZE	Di	DEPTH
28-5-100	5	100	17'-0"	19 3/8"	0.375"	10'-0"	19 1/8"	17 3/4"	2'-6"	2'-4"	3"	2 1/4"Ø x 42"	NONE	50'-0", 55'-0"	4'-0"	14'-0"
29-5-100			30'-0"	17 3/4"												
29A-5-100			35'-0"	17"												

□ INDICATES MAST ARM LENGTH TO BE USED UNLESS OTHERWISE NOTED ON PLANS.

Dist	COUNTY	ROUTE	POST MILES TOTAL PROJECT	SHEET NO.	TOTAL SHEETS
------	--------	-------	--------------------------	-----------	--------------

Stanley P. Johnson
REGISTERED CIVIL ENGINEER
No. C51793
EXPIRES 3-31-18
CIVIL ENGINEER PROFESSIONAL SEAL
STATE OF CALIFORNIA

July 21, 2017
PLANS APPROVAL DATE

THE STATE OF CALIFORNIA OR ITS OFFICERS OR AGENTS SHALL NOT BE RESPONSIBLE FOR THE ACCURACY OR COMPLETENESS OF SCANNED COPIES OF THIS PLAN SHEET.

TO ACCOMPANY PLANS DATED _____

NOTE:
Handhole shall be located on the downstream side of traffic.

**ELECTRICAL SYSTEMS
(SIGNAL AND LIGHTING STANDARD,
CASE 5 SIGNAL MAST ARM LOADING,
WIND VELOCITY=100 MPH AND SIGNAL
MAST ARM LENGTHS 50' TO 55')**

NO SCALE
RSP ES-7G DATED JULY 21, 2017 SUPERSEDES RSP ES-7G DATED JULY 15, 2016 AND STANDARD PLAN ES-7G DATED OCTOBER 30, 2015 - PAGE 462 OF THE STANDARD PLANS BOOK DATED 2015.

REVISED STANDARD PLAN RSP ES-7G

2015 REVISED STANDARD PLAN RSP ES-7G