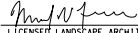

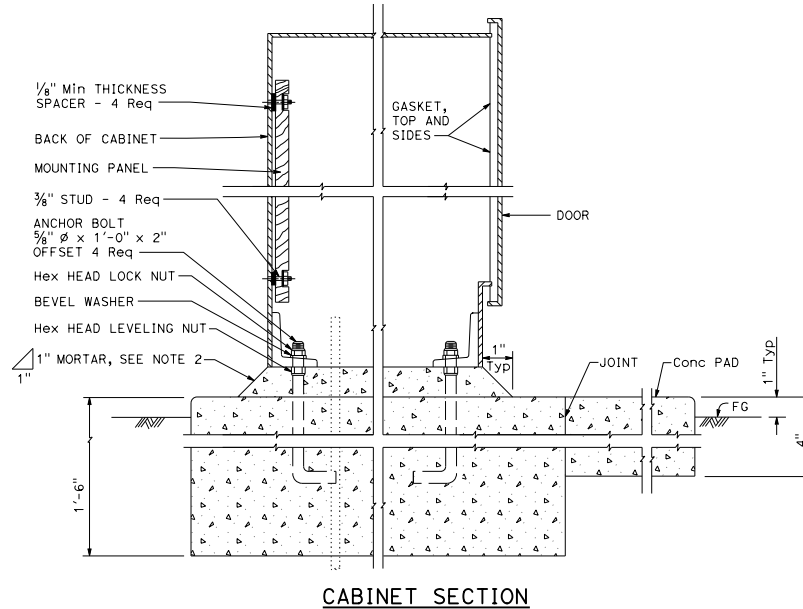
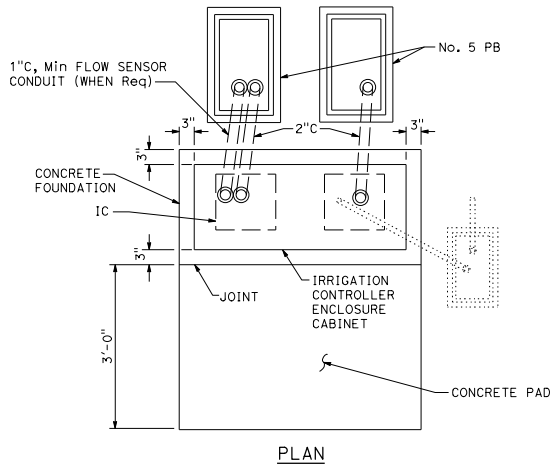


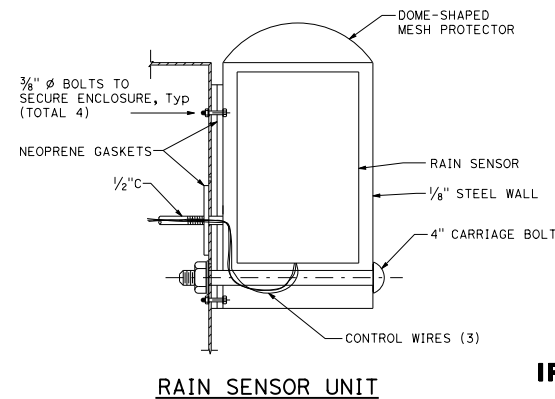
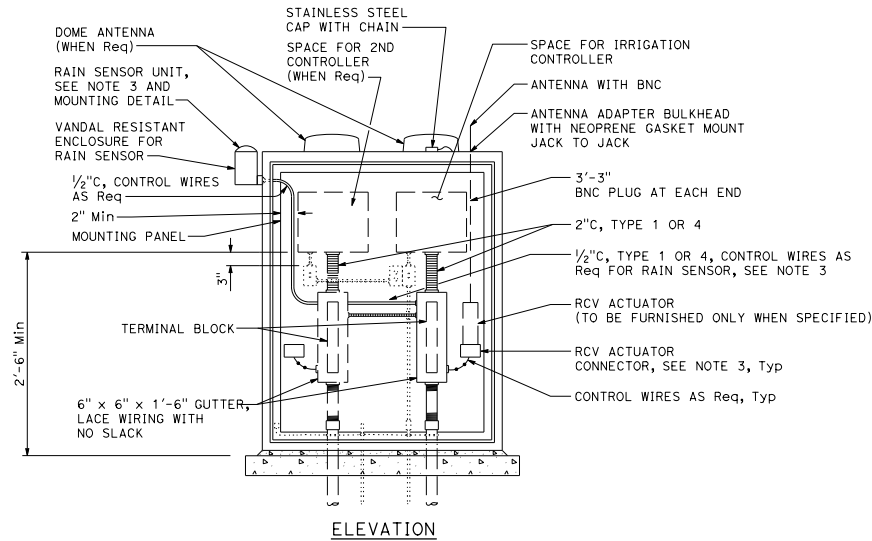
Dist	COUNTY	ROUTE	POST MILES TOTAL PROJECT	SHEET NO.	TOTAL SHEETS
 LICENSED LANDSCAPE ARCHITECT July 21, 2017 PLANS APPROVAL DATE <small>THE STATE OF CALIFORNIA OR ITS OFFICERS OR AGENTS SHALL NOT BE RESPONSIBLE FOR THE ACCURACY OR COMPLETENESS OF SCANNED COPIES OF THIS PLAN SHEET.</small>					
					

TO ACCOMPANY PLANS DATED _____



NOTES:

1. All dimensions are nominal.
2. Mortar shall be 1-part cement, 2-parts plaster sand.
3. Rain sensor unit and remote control valve actuator connectors to be provided when specified.
4. See project plans for location and number of irrigation controllers for each cabinet. Install the cabinet with the back facing the direction of oncoming traffic in the nearest traffic lane.
5. The electrical items shown in dropout are not labeled. See Standard Plan ES-3H for electrical requirements.



STATE OF CALIFORNIA
DEPARTMENT OF TRANSPORTATION
**IRRIGATION CONTROLLER
ENCLOSURE CABINET**

NO SCALE

RSP H10 DATED JULY 21, 2017 SUPERSEDES RSP H10 DATED JULY 15, 2016 AND STANDARD PLAN H10 DATED OCTOBER 30, 2015 - PAGE 239 OF THE STANDARD PLANS BOOK DATED 2015.

REVISED STANDARD PLAN RSP H10

2015 REVISED STANDARD PLAN RSP H10