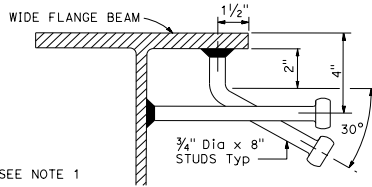
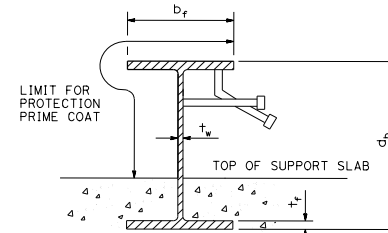


WIDE FLANGE DETAIL



DETAIL D



WIDE FLANGE PAINTING DETAIL

See "TABLE OF BEAM SIZES"

D18+	COUNTY	ROUTE	POST MILES TOTAL PROJECT	SHEET TOTAL NO. SHEETS
Registered Civil Engineer Florante E. Bautista No. C54859 Exp. 6-30-18 CIVIL STATE OF CALIFORNIA				
July 21, 2017 PLANS APPROVAL DATE				
THE STATE OF CALIFORNIA OR ITS OFFICERS OR AGENTS SHALL NOT BE RESPONSIBLE FOR THE ACCURACY OR COMPLETENESS OF SCANNED COPIES OF THIS PLAN SHEET.				

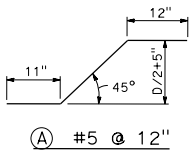
TO ACCOMPANY PLANS DATED _____

LEGEND:

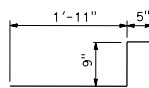
- b_f - FLANGE WIDTH
- t_f - FLANGE THICKNESS
- t_w - WEB THICKNESS
- d_b - BEAM DEPTH
- D1 - PAVEMENT THICKNESSES
- D2

NOTES:

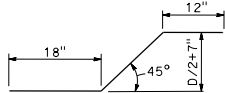
1. Weld 3/8" plate to each end of wide flange beam at pavement edges only. End plate covers the entire wide flange beam.
2. Extend polyethylene foam to the sides and edges of the front part of the plate.



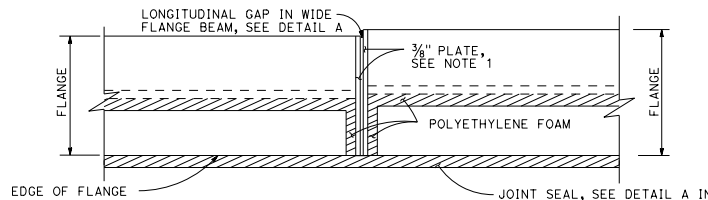
(A) #5 @ 12"



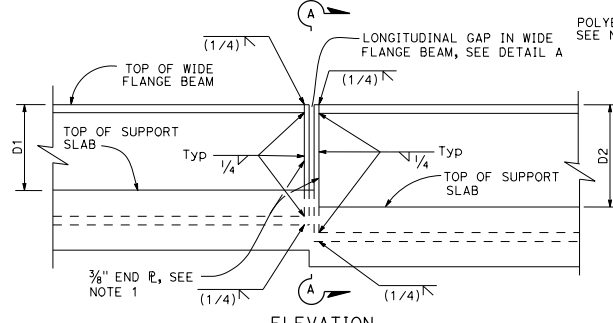
(B) #5 @ 12"



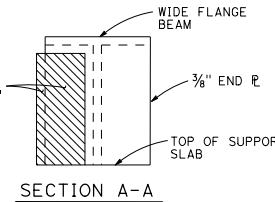
(C) #4 @ 12"



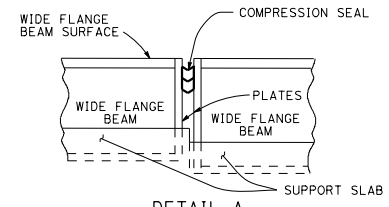
PLAN



ELEVATION



SECTION A-A



DETAIL A

CONCRETE AND STEEL QUANTITIES

ITEM	PAVEMENT THICKNESS							
	.75'	.80'	.85'	.90'	.95'	1.00'	1.05'	1.10'
WIDE FLANGE BEAM								
CONCRETE	4.8 CY	4.8 CY	4.8 CY	4.8 CY	4.8 CY	4.8 CY	4.8 CY	4.8 CY
REINFORCING STEEL	552.0 LBS	552.2 LBS	552.4 LBS	552.6 LBS	552.8 LBS	553.0 LBS	553.1 LBS	553.3 LBS
Exp JOINT TYPE								
CONCRETE	1.1 CY	1.1 CY	1.1 CY	1.1 CY	1.1 CY	1.1 CY	1.1 CY	1.1 CY
REINFORCING STEEL	99.9 LBS	99.9 LBS	100.2 LBS	100.5 LBS	100.8 LBS	101.1 LBS	101.1 LBS	101.6 LBS
WIDE FLANGE SUPPORT SLAB								
STEEL BEAM (WEIGHT OF WIDE FLANGE BEAM AND STUDS)	43.0 LBS/LF +2 PLATES @ 14.9 LBS EA	69.51 LBS/LF +2 PLATES @ 14.9 LBS EA	90.51 LBS/LF +2 PLATES @ 18.5 LBS EA	90.51 LBS/LF +2 PLATES @ 18.5 LBS EA	98.51 LBS/LF +2 PLATES @ 22.0 LBS EA	98.51 LBS/LF +2 PLATES @ 22.0 LBS EA	98.51 LBS/LF +2 PLATES @ 22.0 LBS EA	98.51 LBS/LF +2 PLATES @ 22.0 LBS EA

TABLE OF BEAM SIZES					
PAVEMENT THICKNESS	WIDE FLANGE BEAM DESIGNATION	d _b	b _f	t _f	t _w
.75'	W14 x 43	13.70"	8.00"	0.53"	0.31"
.80'	W14 x 68	14.04"	10.04"	0.72"	0.42"
.85'	W16 x 89	16.75"	10.37"	0.88"	0.53"
.90'	W16 x 89	16.75"	10.37"	0.88"	0.53"
.95'	W18 x 97	18.59"	11.15"	0.87"	0.54"
1.00'	W18 x 97	18.59"	11.15"	0.87"	0.54"
1.05'	W18 x 97	18.59"	11.15"	0.87"	0.54"
1.10'	W18 x 97	18.59"	11.15"	0.87"	0.54"

STATE OF CALIFORNIA
DEPARTMENT OF TRANSPORTATION
**CONTINUOUSLY REINFORCED
CONCRETE PAVEMENT
WIDE FLANGE BEAM TERMINALS**

NO SCALE

RSP P32B DATED JULY 21, 2017 SUPERSEDES STANDARD PLAN P32B
DATED OCTOBER 30, 2015 - PAGE 154 OF THE STANDARD PLANS BOOK DATED 2015.

REVISED STANDARD PLAN RSP P32B

2015 REVISED STANDARD PLAN RSP P32B