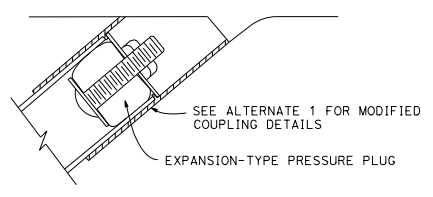
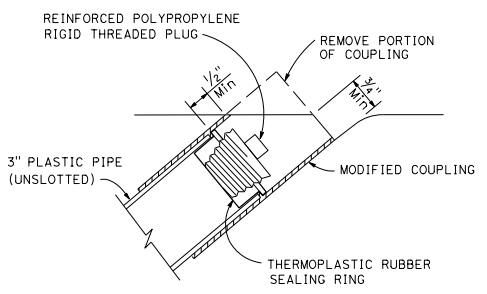
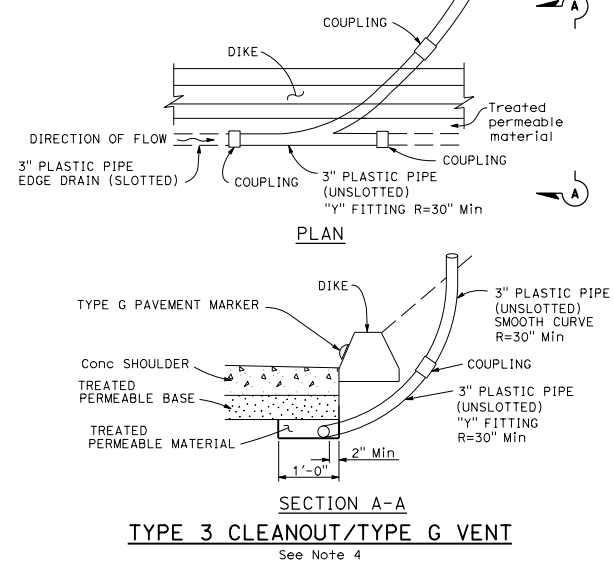
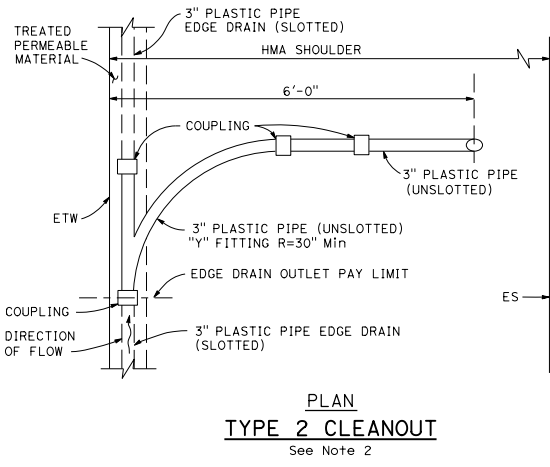
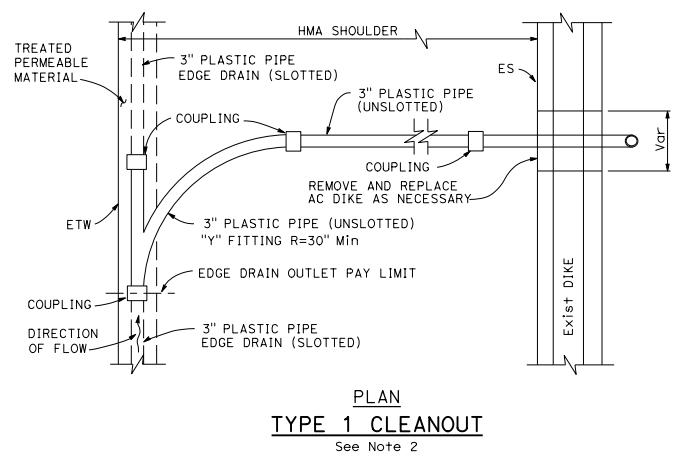
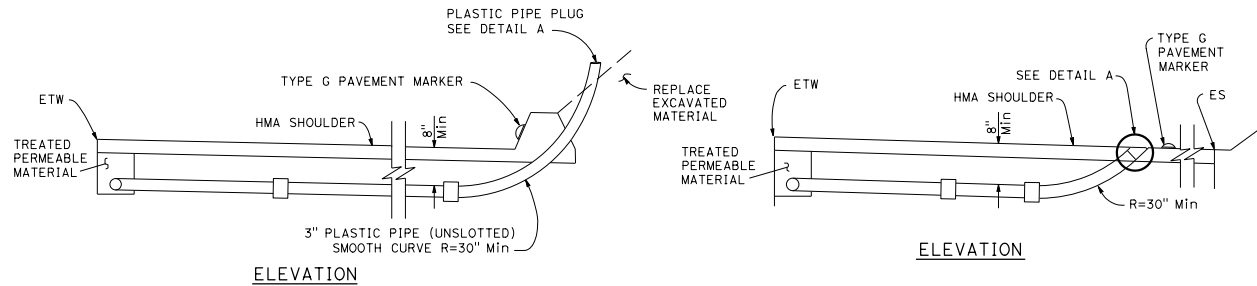


DIST	COUNTY	ROUTE	POST MILES TOTAL PROJECT	SHEET NO.	TOTAL SHEETS

REGISTERED CIVIL ENGINEER
Deepak R. Maskey
 No. C70117
 Exp. 9-30-18
 CIVIL
 STATE OF CALIFORNIA

July 21, 2017
 PLANS APPROVAL DATE
 THE STATE OF CALIFORNIA OR ITS OFFICERS OR AGENTS SHALL NOT BE RESPONSIBLE FOR THE ACCURACY OR COMPLETENESS OF SCANNED COPIES OF THIS PLAN SHEET.

TO ACCOMPANY PLANS DATED _____
PIPE PLUG OR VENT COVER SEE NOTE 4



DETAIL A PLASTIC PIPE PLUG
See Note 3

- NOTES:**
1. See project plans for location and type of cleanout or vent installations.
 2. The position of slotted plastic pipe and limits of treated permeable material shown are for the Type 1 structural section drainage system shown on Standard Plan P50.
 3. Other types of plugs may be substituted with the Engineer's approval.
 4. The Type 3 cleanout and Type G vent is for use with concrete shoulders. The Type 6 structural section drainage system from Standard Plan P50 is shown. Use plastic pipe plug shown in Detail A with Type 3 cleanouts. Use vent cover shown on Revised Standard Plan RSP P51 with Type G vents.

STATE OF CALIFORNIA
DEPARTMENT OF TRANSPORTATION
EDGE DRAIN CLEANOUT AND VENT DETAILS
NO SCALE

RSP P52 DATED JULY 21, 2017 SUPERSEDES STANDARD PLAN P52
DATED OCTOBER 30, 2015 - PAGE 162 OF THE STANDARD PLANS BOOK DATED 2015.
REVISED STANDARD PLAN RSP P52

2015 REVISED STANDARD PLAN RSP P52