

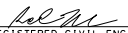
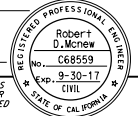
NOTES:

1. Only signs related to pedestrians are shown. For all other signs see appropriate T-sheets.
2. Barricades closing sidewalk shall cover the full width of the sidewalk. Use R9-11 sign when there are destination points between the detour and the work area. Locate the R9-11 sign to allow pedestrian access.
3. Advance warning sign is not required if the work area is within the limits of a larger work zone. Sign shall be equipped with at least two flags for daytime closure. Each flag shall be orange or fluorescent red-orange in color.

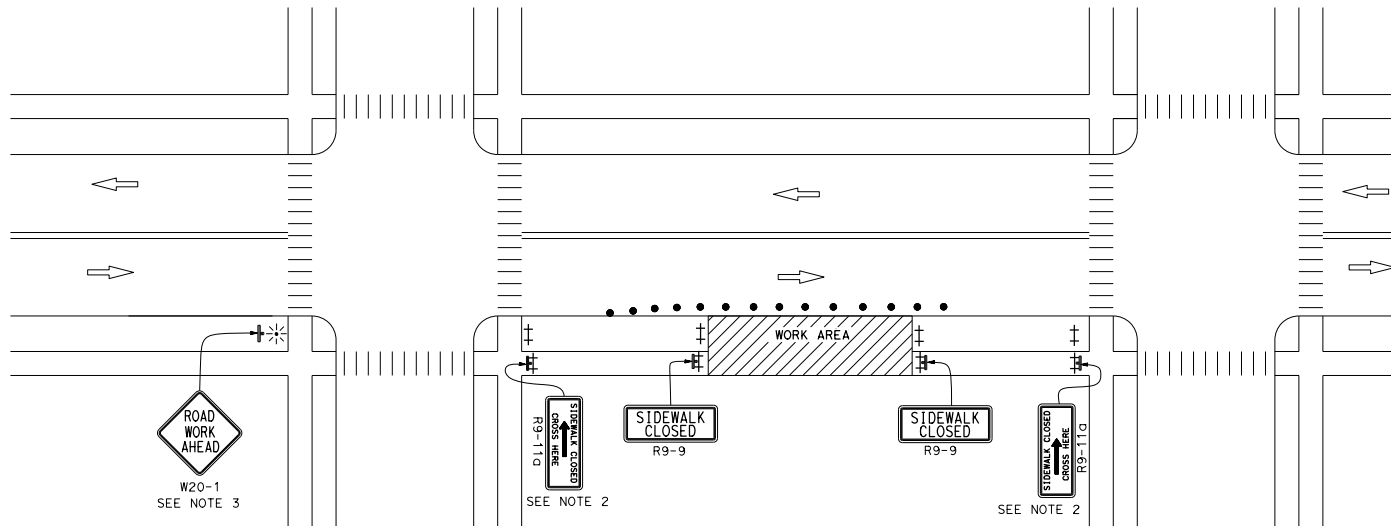
NOTES:

See Revised Standard Plan RSP T9 for tables.
Use cone spacing X for taper segment, Y for tangent segment or Z for conflict situations, as appropriate, per Table 1 unless X,Y, or Z cone spacing is shown on this sheet.

DIST	COUNTY	ROUTE	POST MILES TOTAL PROJECT	SHEET NO.	TOTAL SHEETS


 REGISTERED CIVIL ENGINEER
 July 21, 2017
 PLANS APPROVAL DATE

THE STATE OF CALIFORNIA OR ITS OFFICERS OR AGENTS SHALL NOT BE RESPONSIBLE FOR THE ACCURACY OR COMPLETENESS OF SCANNED COPIES OF THIS PLAN SHEET.

TO ACCOMPANY PLANS DATED _____



LEGEND:

- † BARRICADE
- TRAFFIC CONE
- ✱ PORTABLE FLASHING BEACON
- † SIGN
- † TEMPORARY TRAFFIC CONTROL SIGN ON BARRICADE

SIGN PANEL SIZE (Min)

SIGN DESIGNATION	SIGN OR PLAQUE	SIGN SIZE
R9-9	SIDEWALK CLOSED	24" x 12"
R9-11	SIDEWALK CLOSED AHEAD CROSS HERE	24" x 18"
R9-11a	SIDEWALK CLOSED CROSS HERE	24" x 12"
W20-1	ROAD WORK AHEAD	36" x 36"

STATE OF CALIFORNIA
DEPARTMENT OF TRANSPORTATION

**TEMPORARY PEDESTRIAN ACCESS ROUTES
TYPICAL SIDEWALK CLOSURE
AND PEDESTRIAN DETOUR**

NO SCALE

RSP T30 DATED JULY 21, 2017 SUPPLEMENTS THE STANDARD PLANS BOOK DATED 2015.

REVISED STANDARD PLAN RSP T30