

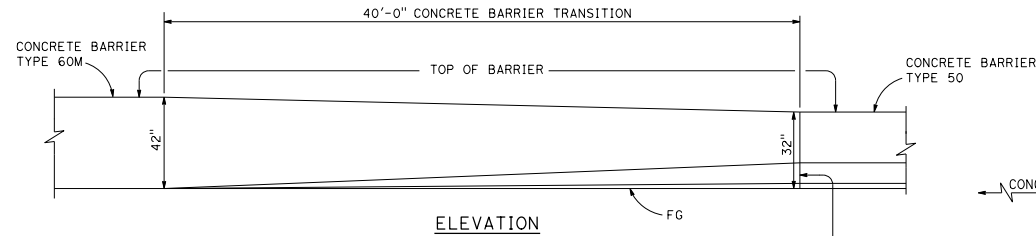
DIST	COUNTY	ROUTE	POST MILES TOTAL PROJECT	SHEET NO.	TOTAL SHEETS

**Randell D. Hiatt**  
REGISTERED CIVIL ENGINEER

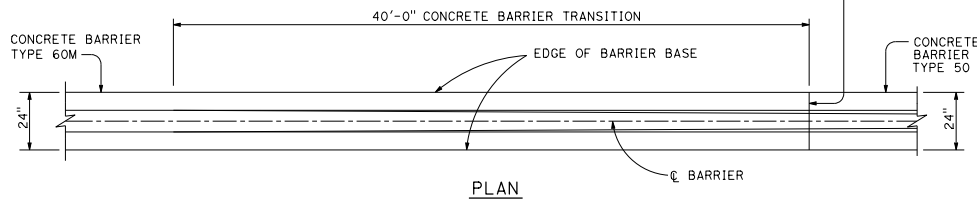
April 20, 2018  
PLANS APPROVAL DATE

No. C60200  
Exp. 6-30-19  
CIVIL

THE STATE OF CALIFORNIA OR ITS OFFICERS OR AGENTS SHALL NOT BE RESPONSIBLE FOR THE ACCURACY OR COMPLETENESS OF SCANNED COPIES OF THIS PLAN SHEET.

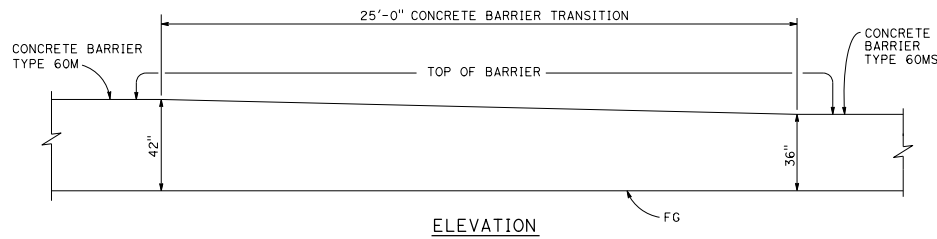


ELEVATION



PLAN

**TRANSITION CONCRETE BARRIER TYPE 60M TO CONCRETE BARRIER TYPE 50**

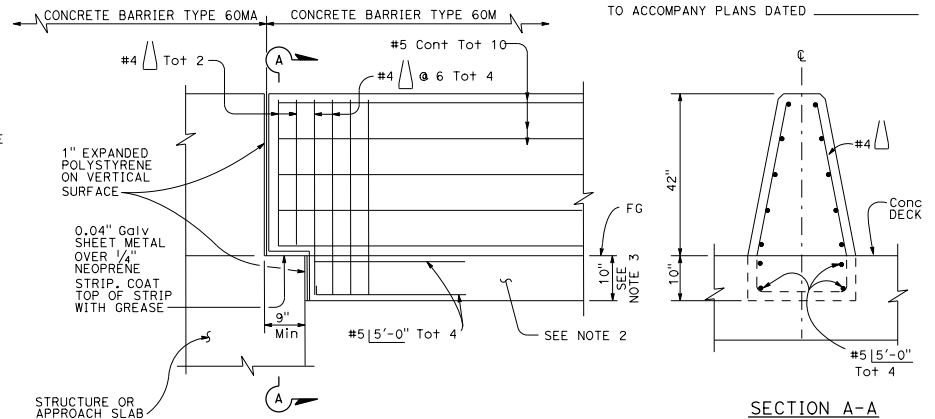


ELEVATION

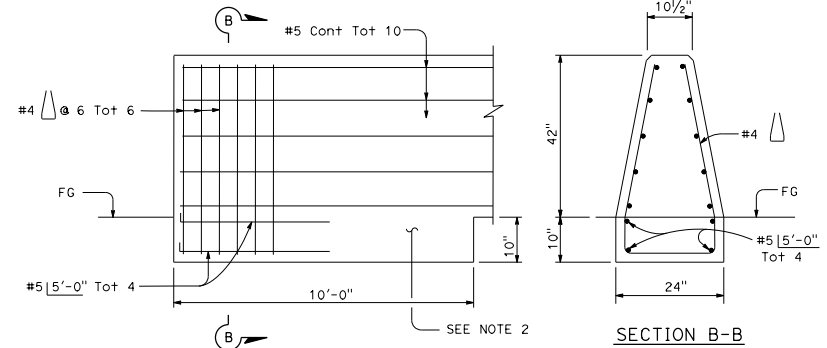
**TRANSITION CONCRETE BARRIER TYPE 60M TO CONCRETE BARRIER TYPE 60MS**

**NOTES:**

1. See Revised Standard Plan RSP A76A for Concrete Barrier Type 60M and Type 60MA.
2. Footing monolithic or doweled with 2-#8 x 8" @ 2'-0". The footing is required at concrete barrier ends and at interruptions in concrete barrier.
3. 10" concrete barrier footing extends 10' back from structure.
4. See Revised Standard Plan RSP A78I for transition to Thrie Beam Barrier.



**CONCRETE BARRIER TYPE 60M CONNECTION TO STRUCTURE**



**CONCRETE BARRIER TYPE 60M END ANCHORAGE**

STATE OF CALIFORNIA  
DEPARTMENT OF TRANSPORTATION  
**CONCRETE BARRIER TYPE 60M**  
NO SCALE

RSP A76B DATED APRIL 20, 2018 SUPERSEDES STANDARD PLAN A76B  
DATED OCTOBER 30, 2015 - PAGE 38 OF THE STANDARD PLANS BOOK DATED 2015.

**REVISED STANDARD PLAN RSP A76B**

2015 REVISED STANDARD PLAN RSP A76B