

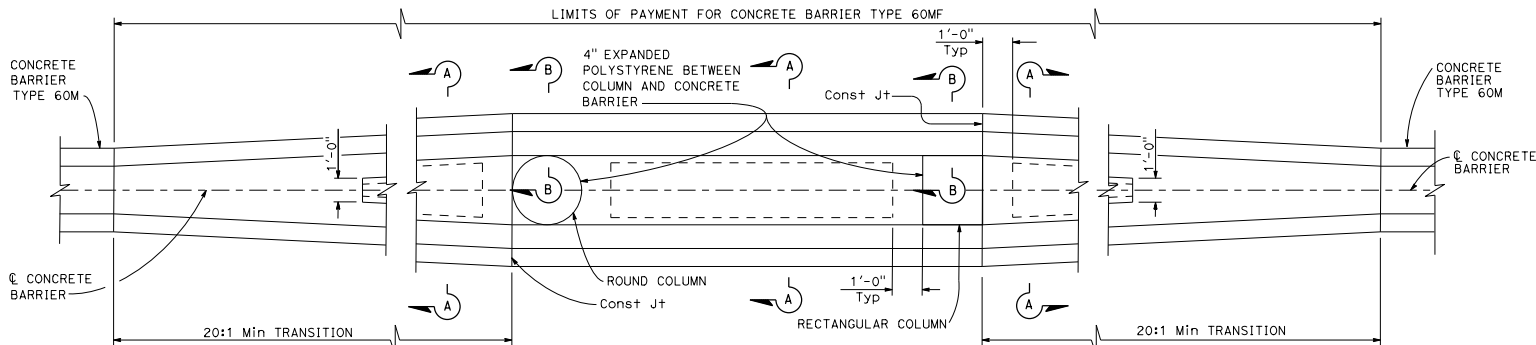
Dist	COUNTY	ROUTE	POST MILES TOTAL PROJECT	SHEET No.	TOTAL SHEETS

**Randell D. Hiatt**  
REGISTERED CIVIL ENGINEER

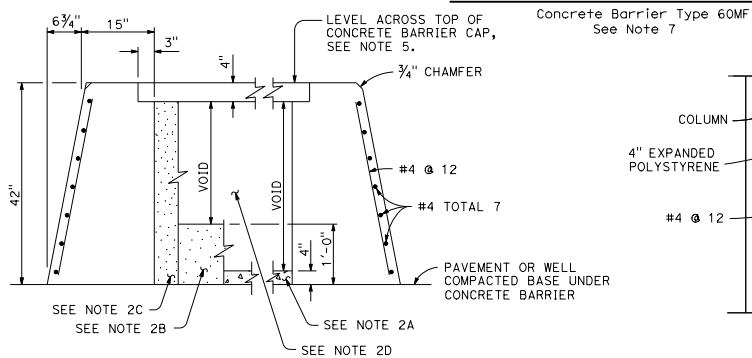
PLANS APPROVAL DATE  
April 20, 2018

Professional Engineer Seal: No. C50200, Exp. 6-30-19, CIVIL, STATE OF CALIFORNIA

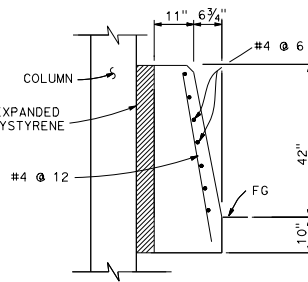
THE STATE OF CALIFORNIA OR ITS OFFICERS OR AGENTS SHALL NOT BE RESPONSIBLE FOR THE ACCURACY OR COMPLETENESS OF SCANNED COPIES OF THIS PLAN SHEET.



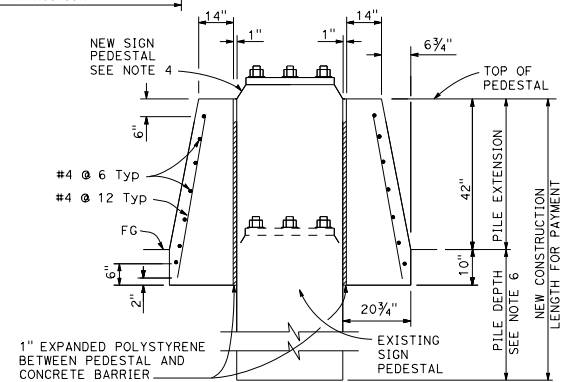
**TRANSITION AT BRIDGE COLUMNS**



SECTION A-A



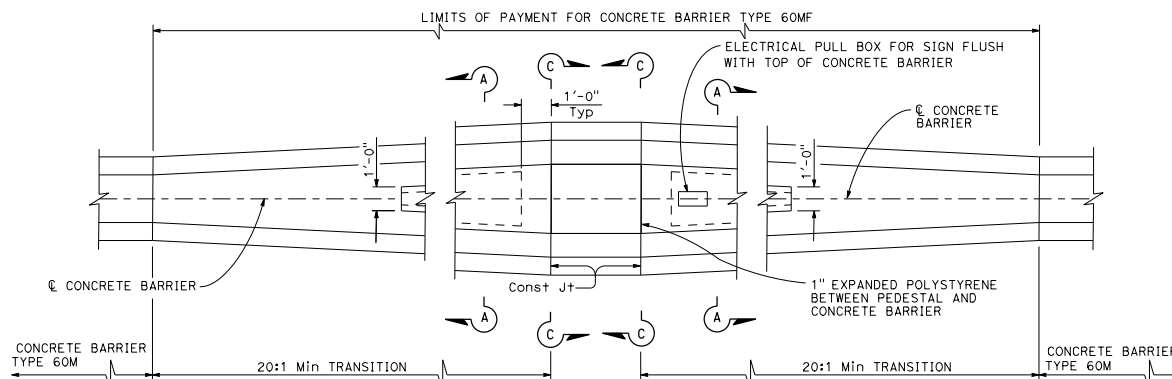
SECTION B-B



SECTION C-C

**NOTES:**

- See Revised Standard Plan RSP A76A for Concrete Barrier Type 60M.
- Contractor options for fill between concrete barrier walls:
  - Place 4" PCC at base between concrete barrier walls.
  - Place 1'-0" of granular material at base between walls.
  - Place granular material from base to bottom of 4" cap.
  - Monolithic concrete with foam blockouts is not permitted.
- Reinforcing steel shall extend continuous through construction joints.
- See Overhead Sign plans for sign pedestal elevations on new construction.
- Adjust height of concrete barrier wall on low side of offset or superelevated roadways to provide level grade across top of concrete barrier cap.
- See Overhead Signs Standard Plan Pile Foundation Tables.
- All locations with limited shoulder width available for barrier, see Revised Standard Plan RSP A76F for use of Concrete Barrier Type 60MGF.



**TRANSITION AT SIGN PEDESTAL**

Concrete Barrier Type 60MF  
See Note 7

STATE OF CALIFORNIA  
DEPARTMENT OF TRANSPORTATION  
**CONCRETE BARRIER TYPE 60MF**  
NO SCALE

RSP A76C DATED APRIL 20, 2018 SUPERSEDES STANDARD PLAN A76C  
DATED OCTOBER 30, 2015 - PAGE 39 OF THE STANDARD PLANS BOOK DATED 2015.

**REVISED STANDARD PLAN RSP A76C**

2015 REVISED STANDARD PLAN RSP A76C