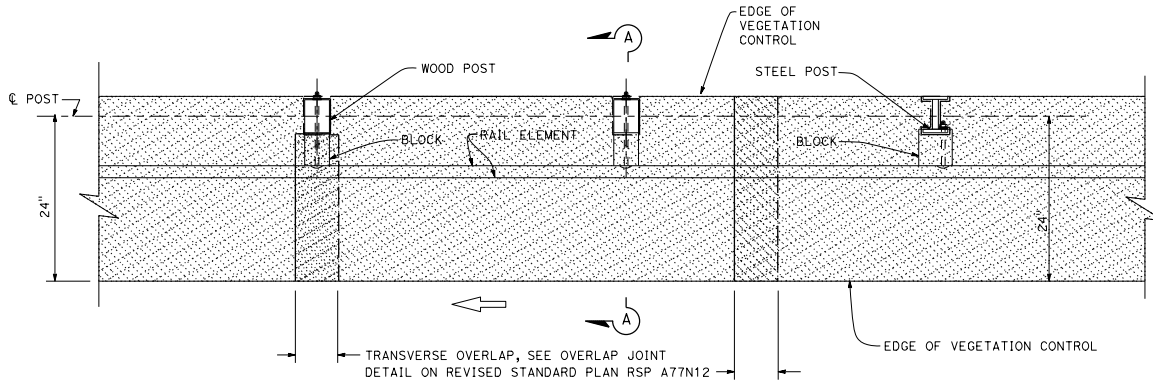


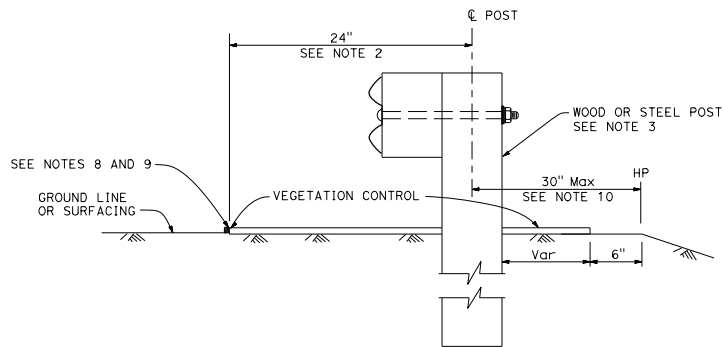
DIST	COUNTY	ROUTE	POST MILES TOTAL PROJECT	SHEET NO.	TOTAL SHEETS

Chi H. Wong
 REGISTERED CIVIL ENGINEER
 April 20, 2018
 PLANS APPROVAL DATE
 THE STATE OF CALIFORNIA OR ITS OFFICERS
 OR AGENTS SHALL NOT BE RESPONSIBLE FOR
 THE ACCURACY OR COMPLETENESS OF SCANNED
 COPIES OF THIS PLAN SHEET.

Chi H. Wong
 No. C054738
 Exp. 12-31-19
 CIVIL
 STATE OF CALIFORNIA



PLAN



SECTION A-A

Without Existing Dike

NOTES:

1. For additional vegetation control details, see Revised Standard Plan RSP A77N12.
2. Where dike is constructed under barrier, construct vegetation control to back edge of dike. Where paved shoulder is constructed within 24" of the post center, construct vegetation control to the edge of paved shoulder.
3. For wood and steel post sizes, see Revised Standard Plans RSP A77N1 and RSP A77N2.
4. For details not shown, see Revised Standard Plans RSP A77L1 and RSP A77L2.
5. This plan for vegetation control installation only.
6. Vegetation control must slope in direction of water flow.
7. Place transverse and longitudinal overlap joint within the limits of vegetation control where applicable.
8. Caulk longitudinal and transverse edges of vegetation control mat where it abuts to paved surface or man-made fixed objects, except guardrail posts.
9. Where vegetation control is adjacent to a dike on a cut slope, construct vegetation control flush with the top edge of dike, and caulk. See Revised Standard Plan RSP A77N12.
10. Where the distance between center of post and hinge point is less than 30", construct vegetation control to 6" from the hinge point.

TO ACCOMPANY PLANS DATED _____

STATE OF CALIFORNIA
DEPARTMENT OF TRANSPORTATION

**FIBER OR RUBBER MAT VEGETATION CONTROL
GUARDRAIL SYSTEM
NARROW VEGETATION CONTROL INSTALLATION**

NO SCALE

RSP A77N13 DATED APRIL 20, 2018 SUPPLEMENTS THE STANDARD PLANS BOOK DATED 2015.

REVISED STANDARD PLAN RSP A77N13

2015 REVISED STANDARD PLAN RSP A77N13