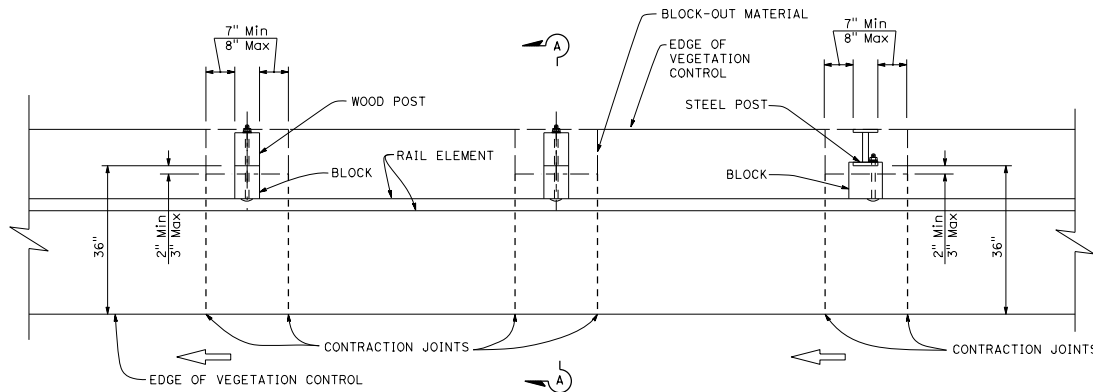


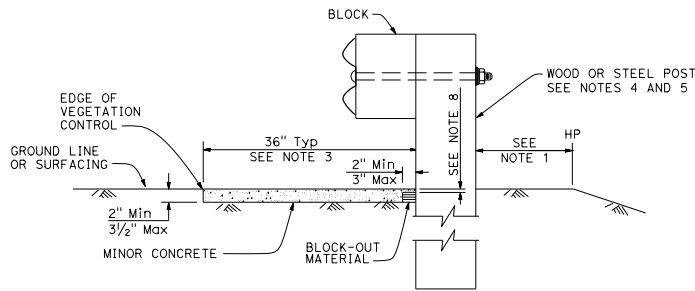
DIST	COUNTY	ROUTE	POST MILES TOTAL PROJECT	SHEET NO.	TOTAL SHEETS

*Chi H. Wong*  
 REGISTERED CIVIL ENGINEER  
 April 20, 2018  
 PLANS APPROVAL DATE  
 THE STATE OF CALIFORNIA OR ITS OFFICERS  
 OR AGENTS SHALL NOT BE RESPONSIBLE FOR  
 THE ACCURACY OR COMPLETENESS OF SCANNED  
 COPIES OF THIS PLAN SHEET.

Chi H. Wong  
 No. C054738  
 Exp. 12-31-19  
 CIVIL  
 STATE OF CALIFORNIA



**PLAN**



**SECTION A-A**

Without Existing Dike

**NOTES:**

1. Use the details on this sheet when the length from the back of post to the hinge point is less than 18". Use the details on Revised Standard Plan RSP A77N5 when the length from the back of the post to the hinge point is greater than 18".
2. Construct vegetation control flush with the back edge of post.
3. Where paved shoulder is constructed within 36" in front of the post, construct vegetation control to the edge of paved shoulder.
4. For wood post sizes, see Revised Standard Plan RSP A77N1.
5. For steel post sizes, see Revised Standard Plan RSP A77N2.
6. For details not shown, see Revised Standard Plans RSP A77L1 and RSP A77L2.
7. Vegetation control must slope to drain water.
8. Concrete over block-out material depth, construct  $\frac{3}{8}$ " Min to  $\frac{5}{8}$ " Max.
9. This plan for vegetation control installation only.

TO ACCOMPANY PLANS DATED \_\_\_\_\_

2015 REVISED STANDARD PLAN RSP A77N5A

STATE OF CALIFORNIA  
DEPARTMENT OF TRANSPORTATION  
**MINOR CONCRETE VEGETATION CONTROL  
GUARDRAIL SYSTEM  
NARROW VEGETATION CONTROL INSTALLATION**

NO SCALE  
RSP A77N5A DATED APRIL 20, 2018 SUPERSEDES RSP A77N5A  
DATED JULY 21, 2017 THAT SUPPLEMENTS THE STANDARD PLANS BOOK DATED 2015.

**REVISED STANDARD PLAN RSP A77N5A**