

DIST	COUNTY	ROUTE	POST MILES TOTAL PROJECT	SHEET NO.	TOTAL SHEETS

Chi H. Wong  
REGISTERED CIVIL ENGINEER

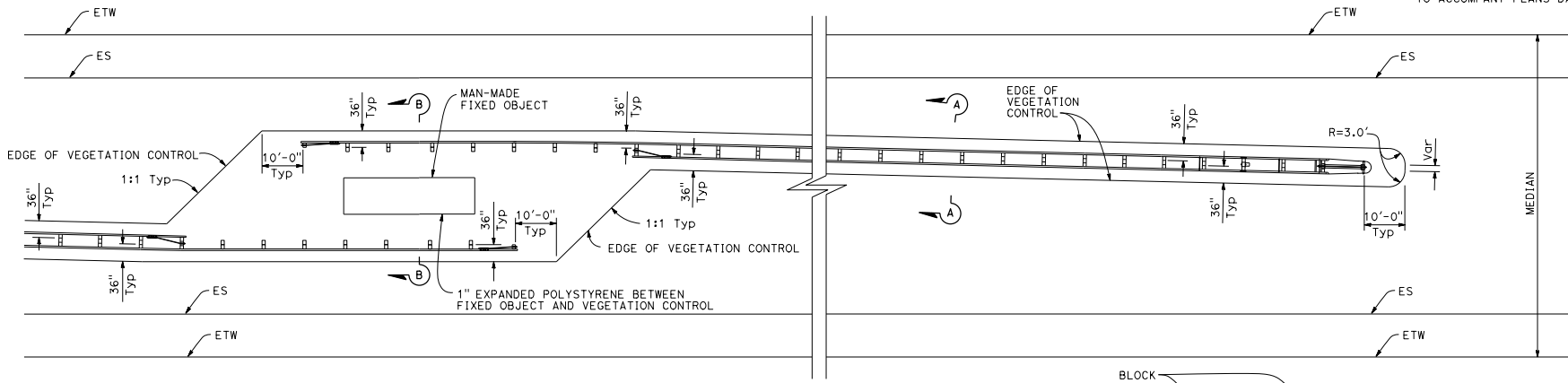
April 20, 2018  
PLANS APPROVAL DATE

Chi H. Wong  
No. C054738  
Exp. 12-31-19  
CIVIL  
REGISTERED PROFESSIONAL ENGINEER  
STATE OF CALIFORNIA

THE STATE OF CALIFORNIA OR ITS OFFICERS OR AGENTS SHALL NOT BE RESPONSIBLE FOR THE ACCURACY OR COMPLETENESS OF SCANNED COPIES OF THIS PLAN SHEET.

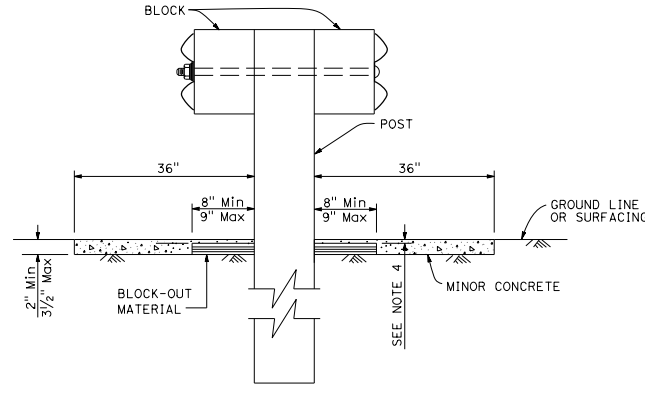
**NOTES:**

1. See Revised Standard Plan RSP A77N5 for additional vegetation control details.
2. Where paved shoulder is constructed within 36" in front of the post, construct vegetation control to the edge of paved shoulder.
3. Vegetation control must slope to drain water.
4. Concrete over block-out material depth, construct  $\frac{3}{8}$ " Min to  $\frac{5}{8}$ " Max.
5. This plan for vegetation control installation only.

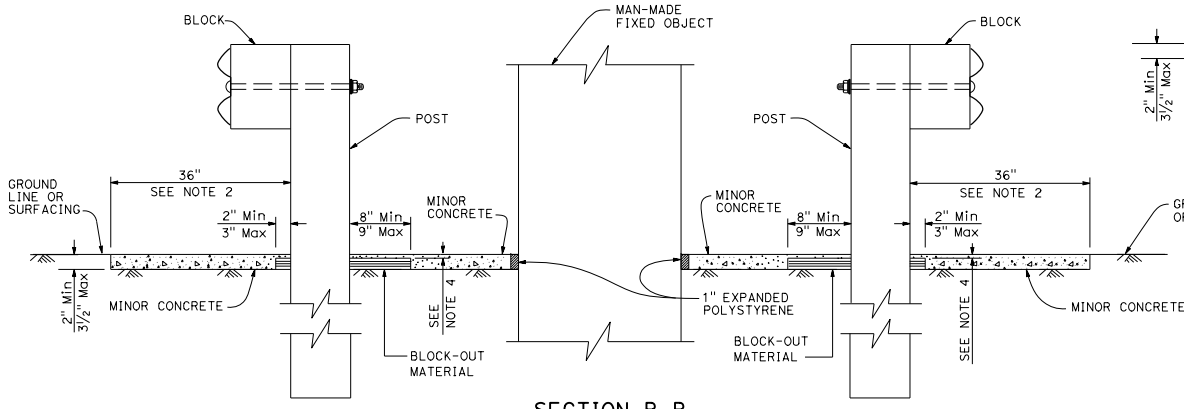


**PLAN**

Fixed object(s) in median



**SECTION A-A**



**SECTION B-B**

STATE OF CALIFORNIA  
DEPARTMENT OF TRANSPORTATION  
**MINOR CONCRETE VEGETATION CONTROL  
GUARDRAIL SYSTEM  
AT FIXED OBJECT**  
NO SCALE

RSP A77N9 DATED APRIL 20, 2018 SUPERSEDES RSP A77N9 DATED JULY 21, 2017 AND  
STANDARD PLAN A77N9 DATED OCTOBER 30, 2015 - PAGE 61 OF THE STANDARD PLANS BOOK DATED 2015.

**REVISED STANDARD PLAN RSP A77N9**

2015 REVISED STANDARD PLAN RSP A77N9