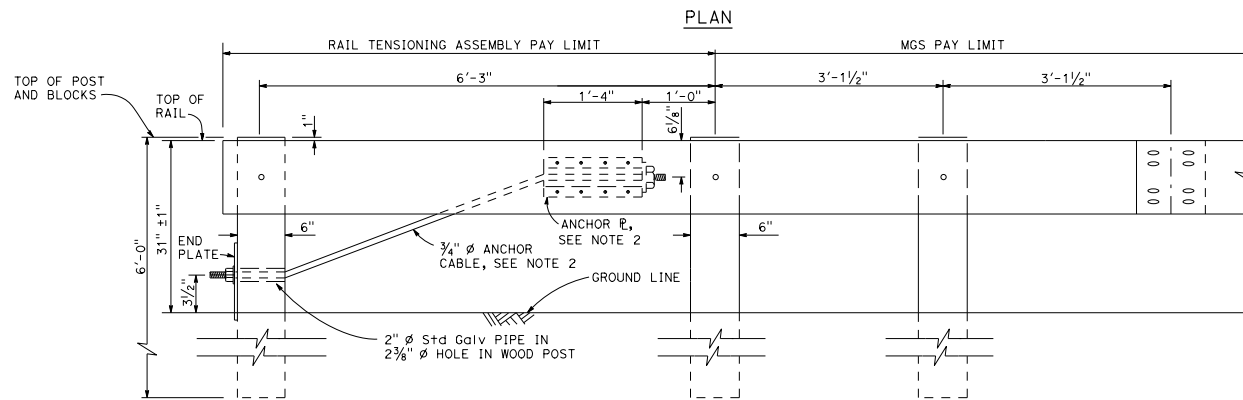
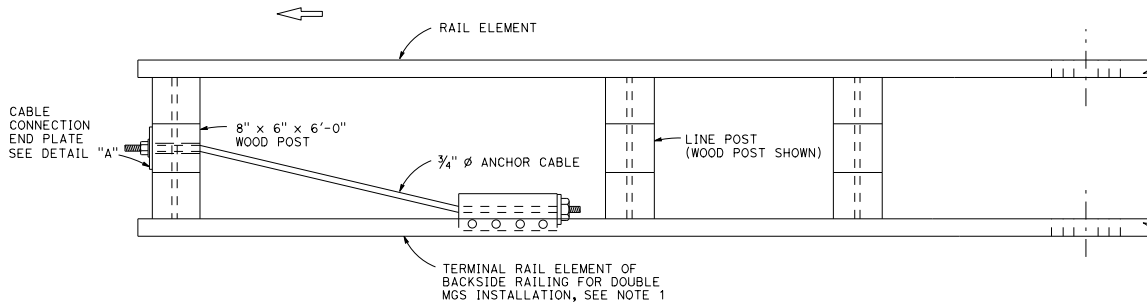


Dist	COUNTY	ROUTE	POST MILES TOTAL PROJECT	SHEET NO.	TOTAL SHEETS
<i>Randell D. Hiatt</i> REGISTERED CIVIL ENGINEER					
April 20, 2018 PLANS APPROVAL DATE					
No. C60200 Exp. 6-30-19 CIVIL					
<small>THE STATE OF CALIFORNIA OR ITS OFFICERS OR AGENTS SHALL NOT BE RESPONSIBLE FOR THE ACCURACY OR COMPLETENESS OF SCANNED COPIES OF THIS PLAN SHEET.</small>					

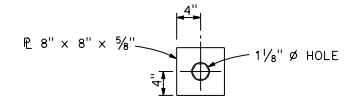
TO ACCOMPANY PLANS DATED _____

NOTES:

1. See Standard Plans A7703 and A77R1 for typical use of rail tensioning assembly.
2. For details of the anchor plate and $\frac{3}{4}$ " cable, see Standard Plan A77S3.



ELEVATION
RAIL TENSIONING
ASSEMBLY
See Note 1



DETAIL "A"
CABLE CONNECTION
END PLATE

STATE OF CALIFORNIA
DEPARTMENT OF TRANSPORTATION

MIDWEST GUARDRAIL SYSTEM
RAIL TENSIONING ASSEMBLY

NO SCALE

RSP A77S2 DATED APRIL 20, 2018 SUPERSEDES STANDARD PLAN A77S2
DATED OCTOBER 30, 2015 - PAGE 83 OF THE STANDARD PLANS BOOK DATED 2015.

REVISED STANDARD PLAN RSP A77S2

2015 REVISED STANDARD PLAN RSP A77S2