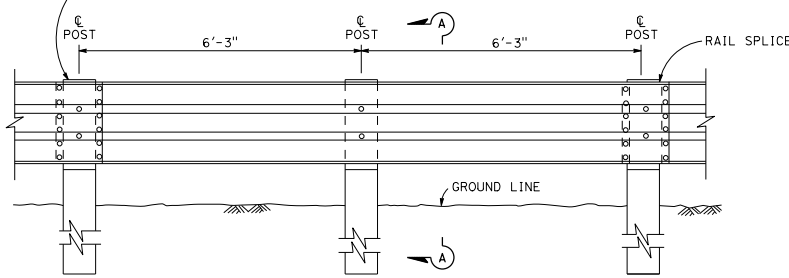


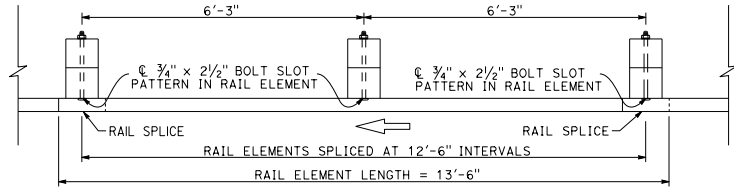
PLAN



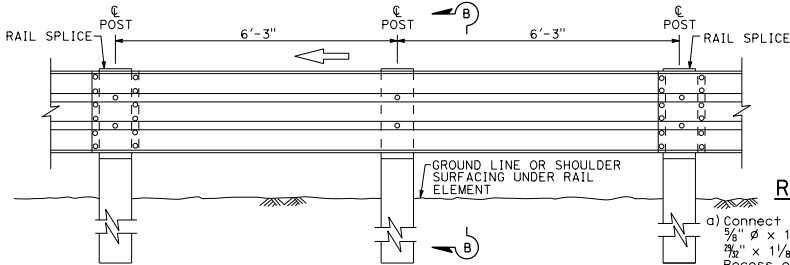
ELEVATION

DOUBLE THRIE BEAM BARRIER

(Wood post and blocks)
See Note 1



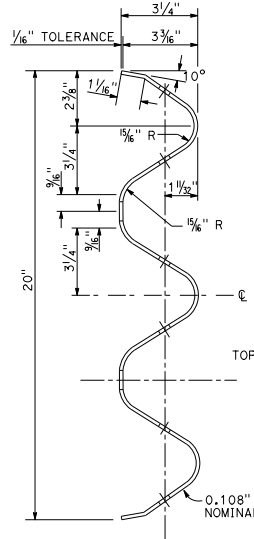
PLAN



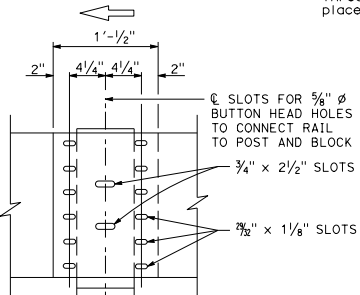
ELEVATION

SINGLE THRIE BEAM BARRIER

(Wood post and blocks)
See Note 1



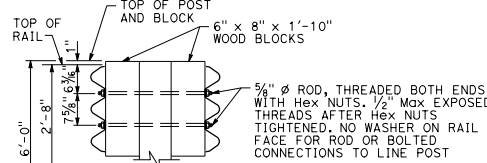
SECTION THRU RAIL ELEMENT



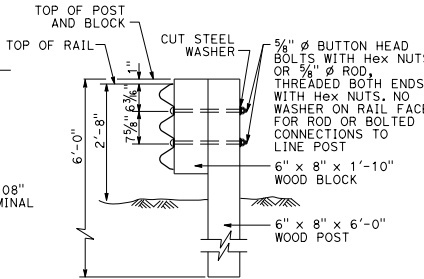
ELEVATION

RAIL ELEMENT SPLICE DETAIL

- Connect the overlapped ends of the thrie beam rail elements with $\frac{5}{16}$ " ϕ x $\frac{1}{4}$ " button head oval shoulder bolts inserted into the $\frac{3}{8}$ " x $\frac{1}{4}$ " slots and bolted together with $\frac{5}{16}$ " ϕ recessed hex nuts. Recess of hex nut points toward rail element. A total of 12 bolts and nuts are to be used at each rail splice connection.
- The ends of the rail elements are to be overlapped in the direction of traffic (see details).
- Where end cap is to be attached to the end of a rail element, a total of 4 of the above described splice bolts and nuts are to be used. Where a return cap is to be attached to the ends of rail elements, a total of 8 of the above described splice bolts and nuts are to be used.

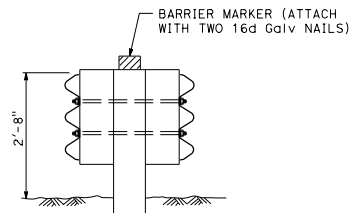


SECTION A-A TYPICAL WOOD LINE POST INSTALLATION



SECTION B-B TYPICAL WOOD LINE POST INSTALLATION

Where bolts are used, install so that the threaded end of the bolts and nuts are placed away from traffic side of rail.



THRIE BEAM BARRIER DELINEATION

See Note 8

DIST	COUNTY	ROUTE	POST MILES TOTAL PROJECT	SHEET NO.	TOTAL SHEETS

Randell D. Hiatt
 REGISTERED CIVIL ENGINEER
 No. C50200
 Exp. 6-30-19
 CIVIL
 STATE OF CALIFORNIA

April 20, 2018
 PLANS APPROVAL DATE
 THE STATE OF CALIFORNIA OR ITS OFFICERS OR AGENTS SHALL NOT BE RESPONSIBLE FOR THE ACCURACY OR COMPLETENESS OF SCANNED COPIES OF THIS PLAN SHEET.

TO ACCOMPANY PLANS DATED _____

NOTES:

- For details of steel post thrie beam barrier, see Standard Plan A78B.
- For details of standard hardware, posts and blocks used to construct thrie beam barrier, see Standard Plan A78C1 and A78C2.
- Thrie beam barrier post spacing to be 6'-3" center to center, except as otherwise noted.
- Top of barrier rail to be 2'-8" above ground line or shoulder surfacing under the rail element.
- For barrier end treatments and barrier connections, see Standard Plans A78E3 and A78C, and Standard Plans A78E1, A78E2, A77Q1, A77Q2 and A78H.
- For connection to Concrete Barrier (Type 60M), see Revised Standard Plans RSP A781.
- For details of thrie beam barrier on bridge see Standard Plan A78D2. For details of thrie beam barrier at fixed object, see Standard Plan A78D1.
- See Project Plans for barrier delineation locations.

STATE OF CALIFORNIA
DEPARTMENT OF TRANSPORTATION

THRIE BEAM BARRIER STANDARD BARRIER RAILING SECTION (WOOD POST WITH WOOD BLOCK)

NO SCALE

RSP A78A DATED APRIL 20, 2018 SUPERSEDES STANDARD PLAN A78A DATED OCTOBER 30, 2015 - PAGE 94 OF THE STANDARD PLANS BOOK DATED 2015.

REVISED STANDARD PLAN RSP A78A

2015 REVISED STANDARD PLAN RSP A78A