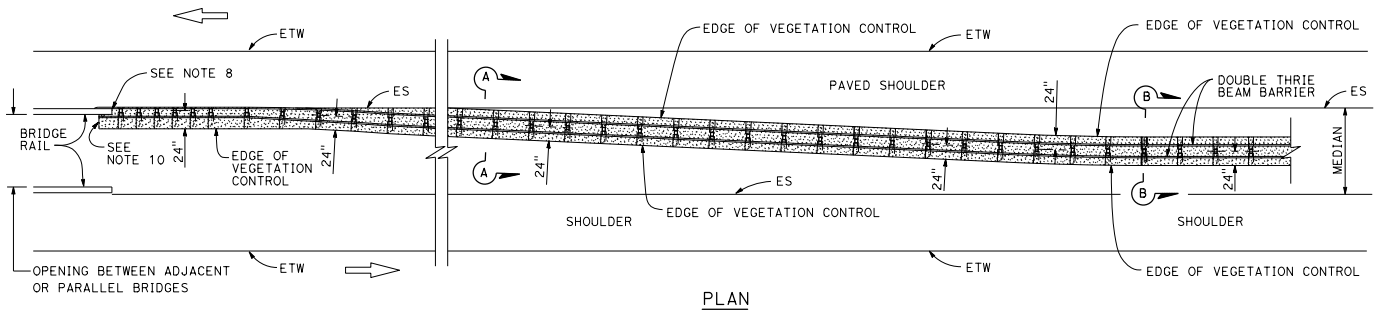


DIST	COUNTY	ROUTE	POST MILES TOTAL PROJECT	SHEET NO.	TOTAL SHEETS

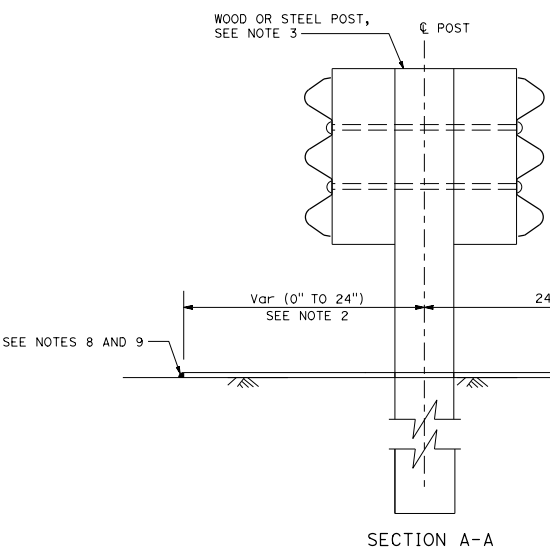
Chi H. Wong
 REGISTERED CIVIL ENGINEER
 April 20, 2018
 PLANS APPROVAL DATE
 THE STATE OF CALIFORNIA OR ITS OFFICERS OR AGENTS SHALL NOT BE RESPONSIBLE FOR THE ACCURACY OR COMPLETENESS OF SCANNED COPIES OF THIS PLAN SHEET.

REGISTERED PROFESSIONAL ENGINEER
 Chi H. Wong
 No. C054738
 Exp. 12-31-19
 CIVIL
 STATE OF CALIFORNIA

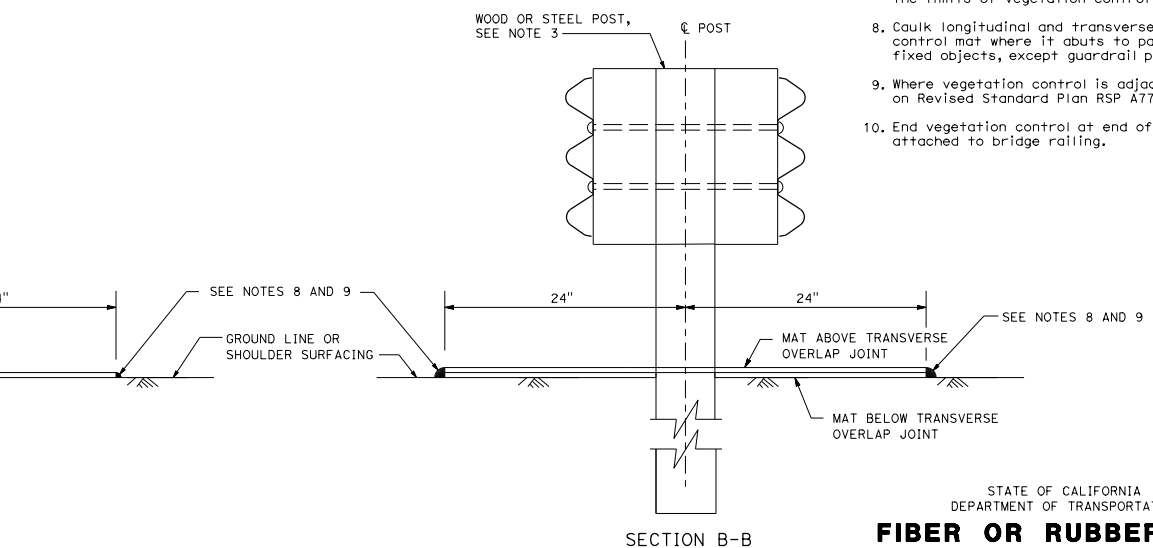
TO ACCOMPANY PLANS DATED _____



PLAN



SECTION A-A



SECTION B-B

NOTES:

1. For additional vegetation control details, see Revised Standard Plan RSP A77N12.
2. Where dike is constructed under barrier, construct vegetation control to back edge of dike. Where paved shoulder is constructed within 24" of the post center, construct vegetation control to the edge of paved shoulder.
3. For wood and steel post sizes, see Standard Plan A78C2.
4. For details not shown, see Standard Plans A78A and A78B.
5. This plan for vegetation control installation only.
6. Vegetation control must slope in direction of water flow.
7. Place longitudinal and transverse overlap joint within the limits of vegetation control where applicable.
8. Caulk longitudinal and transverse edges of vegetation control mat where it abuts to paved surface or man-made fixed objects, except guardrail posts.
9. Where vegetation control is adjacent to a dike, see details on Revised Standard Plan RSP A77N12.
10. End vegetation control at end of backside rail element attached to bridge railing.

STATE OF CALIFORNIA
 DEPARTMENT OF TRANSPORTATION
**FIBER OR RUBBER MAT
 VEGETATION CONTROL
 THRIE BEAM BARRIER
 AT STRUCTURE APPROACH**
 NO SCALE

RSP A78C10 DATED APRIL 20, 2018 SUPPLEMENTS THE STANDARD PLANS BOOK DATED 2015.

REVISED STANDARD PLAN RSP A78C10

2015 REVISED STANDARD PLAN RSP A78C10