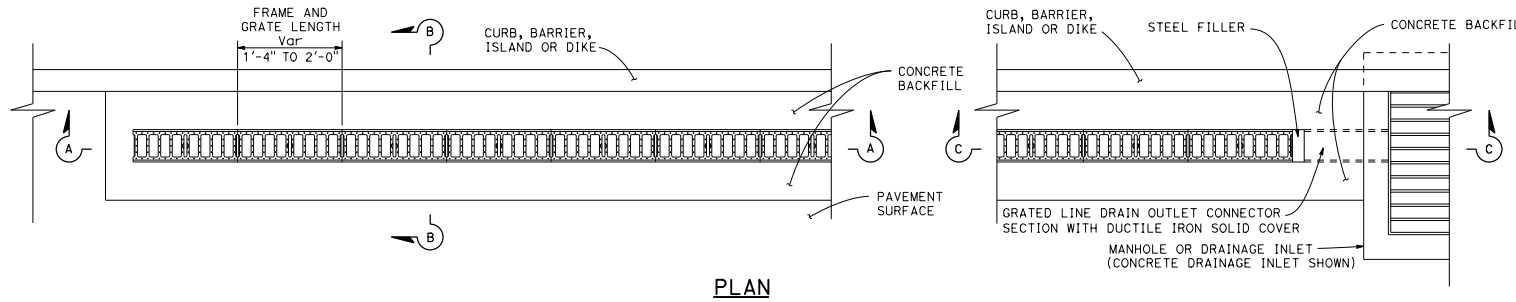


DIST	COUNTY	ROUTE	POST MILES TOTAL PROJECT	SHEET NO.	TOTAL SHEETS

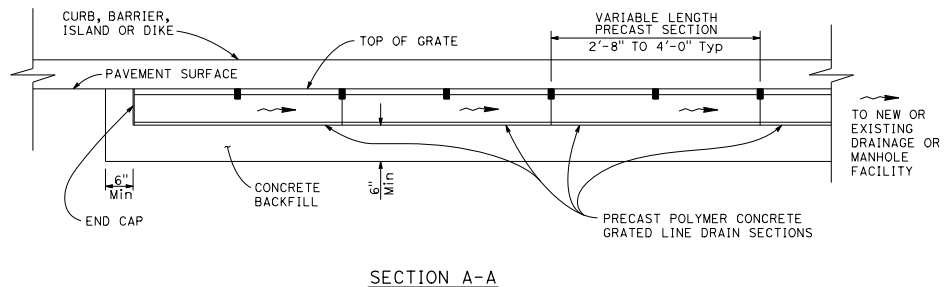
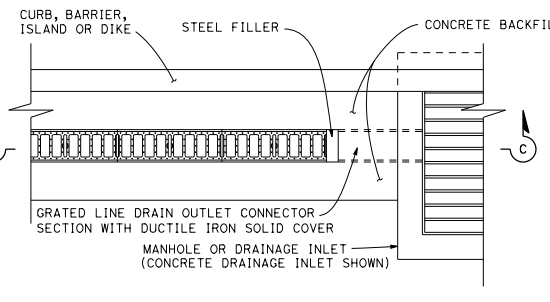
Raymond Don Isztou
 REGISTERED CIVIL ENGINEER
 No. C37332
 Exp. 6-30-18
 CIVIL
 STATE OF CALIFORNIA

April 20, 2018
 PLANS APPROVAL DATE

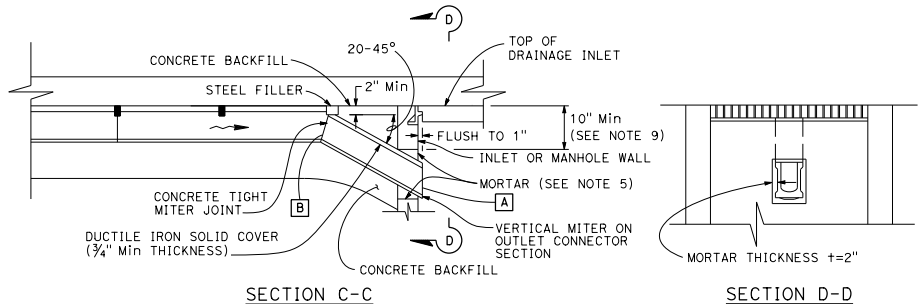
THE STATE OF CALIFORNIA OR ITS OFFICERS OR AGENTS SHALL NOT BE RESPONSIBLE FOR THE ACCURACY OR COMPLETENESS OF SCANNED COPIES OF THIS PLAN SHEET.



PLAN



SECTION A-A

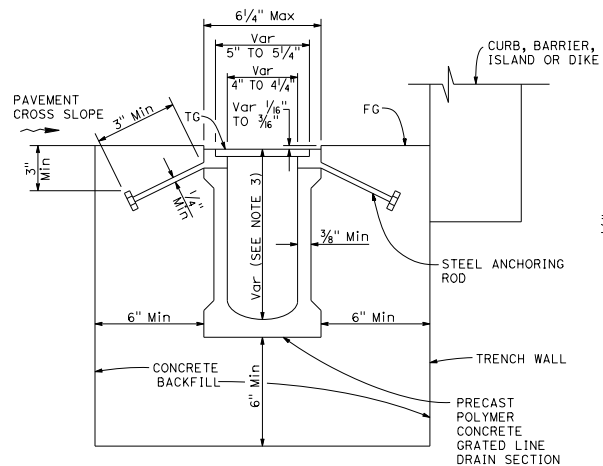


SECTION C-C

SECTION D-D

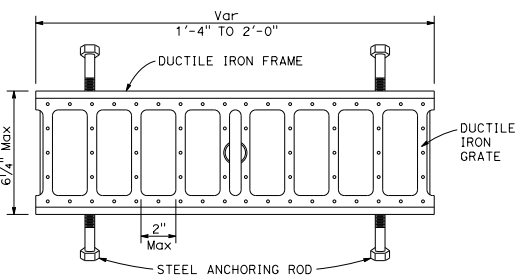
NOTES:

1. See Quantity Sheets for discharge capacity requirements.
2. Discharge capacity (cfs) at point A must be equivalent to maximum channel discharge capacity of grated line drain at point B.
3. Precast polymer concrete drain sections are available in non-sloped uniform depth sections 4 1/8" to 12" or in 0.6 percent pre-sloped sections with graduated depths from 4 1/8" to 12". See Project Plans for trench sections to be installed.
4. Nominal dimensions shown. Allowable tolerance ± 2%.
5. For GMP inlet connection, seal field joint with a pliable mixture of sand, portland cement and emulsified asphalt (mixture of 1 part portland cement, 3-5 parts sand and 1/2 part SSI emulsified asphalt).
6. Within designated pedestrian paths of travel, the maximum grate opening in the direction of pedestrian traffic must not exceed 1/2".
7. Grate patterns may vary from detail shown. See Special Provisions.
8. 3/8" maximum gap between adjacent gratings.
9. Contractor to field verify minimum depth to avoid conflict with inlet top.



SECTION B-B

(Precast grated line drain with non-integral frame)



FRAME AND GRATE DETAIL

See Notes 6, 7 and 8

STATE OF CALIFORNIA
 DEPARTMENT OF TRANSPORTATION
**GRATED LINE DRAIN
 DETAILS No. 1 - POLYMER
 CONCRETE, 4" NOMINAL WIDTH**
 NO SCALE

RSP D98G DATED APRIL 20, 2018 SUPERSEDES RSP D98G
 DATED JANUARY 20, 2017 THAT SUPPLEMENTS THE STANDARD PLANS BOOK DATED 2015.

REVISED STANDARD PLAN RSP D98G

2015 REVISED STANDARD PLAN RSP D98G