

**LEGEND**

- TRAFFIC CONE
- ⊢ TEMPORARY TRAFFIC CONTROL SIGN
- ⬢⬢⬢⬢ FLASHING ARROW SIGN (FAS)
- ☀ FAS SUPPORT OR TRAILER
- ☀ PORTABLE FLASHING BEACON

**SIGN PANEL SIZE (Min)**

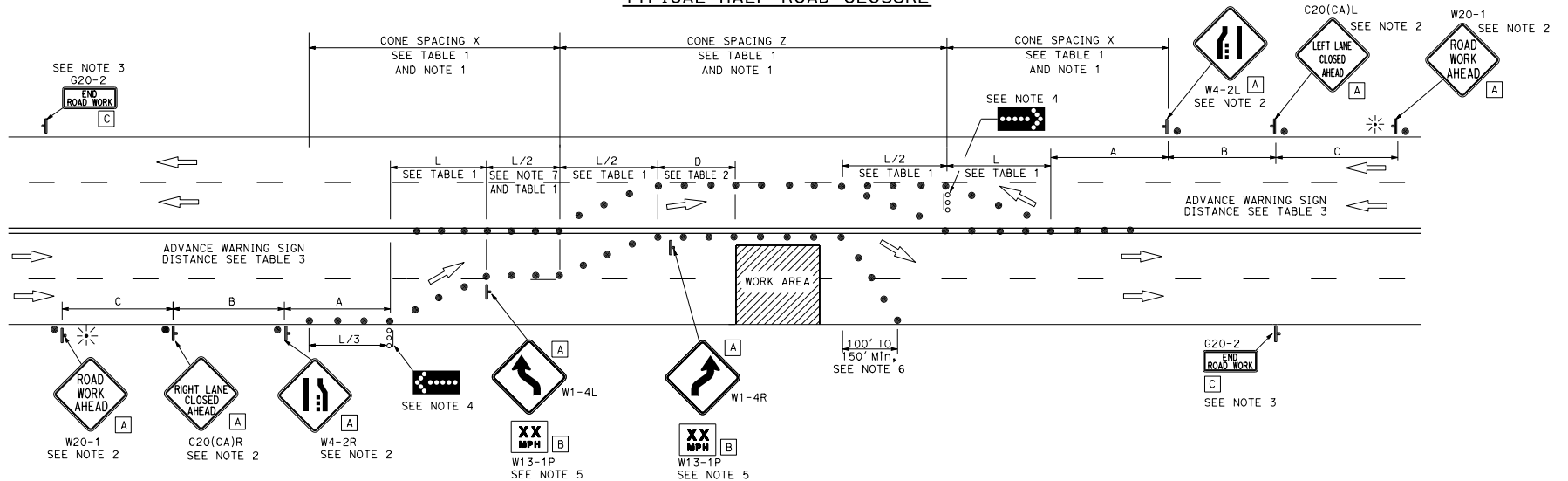
- A 48" x 48"
- B 24" x 24"
- C 36" x 18"

**NOTES:**

See Revised Standard Plan RSP T9 for tables.  
Use cone spacing X for taper segment, Y for tangent segment or Z for conflict situations, as appropriate, per Table 1, unless X, Y, or Z cone spacing is shown on this sheet.  
Provide at least one person to continuously maintain traffic control devices for lane closures.

D18+	COUNTY	ROUTE	POST MILES TOTAL PROJECT	SHEET NO.	TOTAL SHEETS
REGISTERED CIVIL ENGINEER April 20, 2018 PLANS APPROVAL DATE THE STATE OF CALIFORNIA OR ITS OFFICERS OR AGENTS SHALL NOT BE RESPONSIBLE FOR THE ACCURACY OR COMPLETENESS OF SCANNED COPIES OF THIS PLAN SHEET.					

**TYPICAL HALF ROAD CLOSURE**



**NOTES:**

1. Portable delineators placed at one-half the spacing indicated for traffic cones may be used instead of cones for daytime closures only.
2. Each advance warning sign shall be equipped with at least two flags for daytime closure. Each flag shall be at least 16" x 16" in size and shall be orange or fluorescent red-orange in color. Flashing beacons shall be placed at the locations indicated for lane closure during hours of darkness.
3. A G20-2 "END ROAD WORK" sign, shall be placed at the end of the lane closure unless the end of work area is obvious or ends within the larger project's limits.
4. A minimum 1500' sight distance shall be provided where possible for vehicles approaching the first flashing arrow sign. Lane closures shall not begin at the top of crest verticle curve or on a horizontal curve.
5. Advisory speed will be determined by the Engineer, The W13-1P Plaque will not be required when advisory speed is more than the posted or maximum speed limit.
6. Length may be reduced by the Engineer to address site conditions.
7. The tangent (L/2) shall be used.

STATE OF CALIFORNIA  
DEPARTMENT OF TRANSPORTATION

**TRAFFIC CONTROL SYSTEM  
FOR HALF ROAD CLOSURE ON  
MULTILANE CONVENTIONAL  
HIGHWAYS AND EXPRESSWAYS**

NO SCALE

RSP T12 DATED APRIL 20, 2018 SUPERSEDES STANDARD PLAN T12  
DATED OCTOBER 30, 2015 - PAGE 253 OF THE STANDARD PLANS BOOK DATED 2015.

**REVISED STANDARD PLAN RSP T12**

2015 REVISED STANDARD PLAN RSP T12