

TYPICAL RAMP CLOSURES

SIGN PANEL SIZE (Min)

- A 48" x 48"
- B 48" x 30"
- C 36" x 36"
- D 48" x 36"

LEGEND

- TRAFFIC CONE
- ⊥ TEMPORARY TRAFFIC CONTROL SIGN
- ⊥ BARRICADES
- ⊛ PORTABLE FLASHING BEACON

DIST	COUNTY	ROUTE	POST MILES TOTAL PROJECT	SHEET NO.	TOTAL SHEETS

Robert D. McNew
REGISTERED CIVIL ENGINEER
No. C68559
Exp. 9-30-19
CIVIL

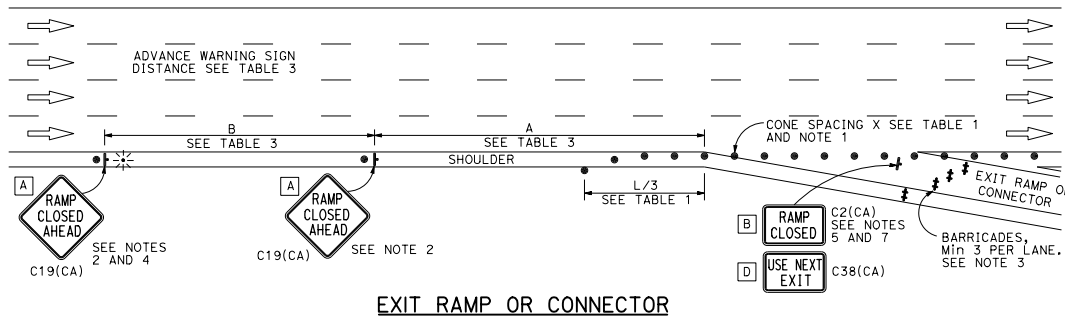
April 20, 2018
PLANS APPROVAL DATE

THE STATE OF CALIFORNIA OR ITS OFFICERS OR AGENTS SHALL NOT BE RESPONSIBLE FOR THE ACCURACY OR COMPLETENESS OF SCANNED COPIES OF THIS PLAN SHEET.

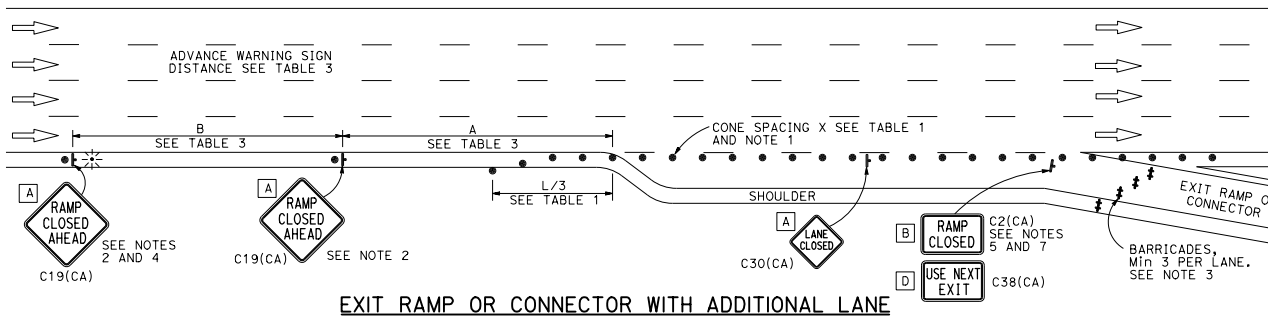
TO ACCOMPANY PLANS DATED _____

NOTES:

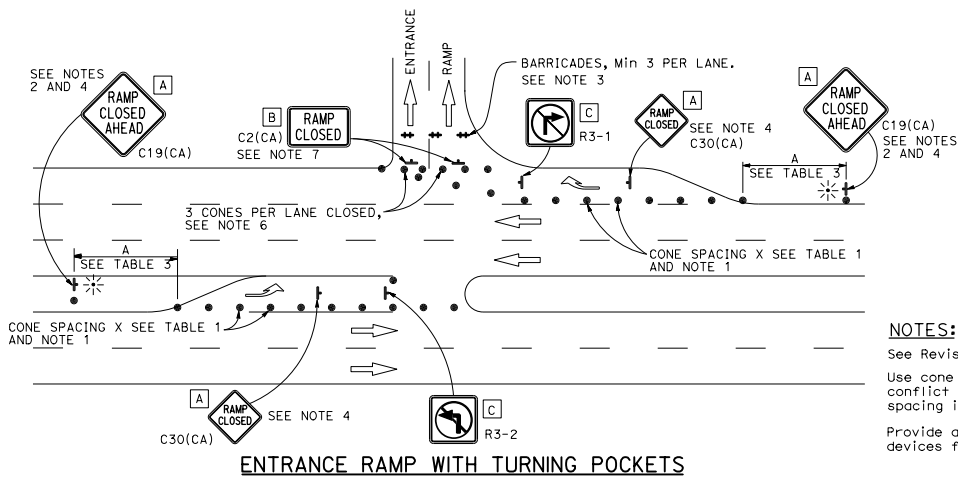
- Portable delineators placed at one-half the spacing indicated for traffic cones may be used instead of cones for daytime closures only.
- Each advance warning C19(CA) "RAMP CLOSED AHEAD" sign shall be equipped with at least two flags for daytime closure. Each flag shall be at least 16" x 16" in size and shall be orange or fluorescent red-orange in color. A flashing beacon shall be placed on top of the first C19(CA) sign during hours of darkness.
- Barricades shall be Type I, II or III for closures lasting one week or less and Type III for closures lasting longer than one week.
- In addition to placing the C19(CA) "RAMP CLOSED AHEAD" and C30(CA) "RAMP CLOSED" signs, black on orange overlay plates with the word "closed" may be mounted. As directed by the Engineer on all guide signs that refer to the closed ramp. The letter size on the overlay shall be the same as the guide sign.
- The existing "EXIT" signs shall be covered during ramp closures.
- A minimum of 3 cones shall be placed transversely across each closed lane and shoulder.
- C2(CA) sign shall be black and white.



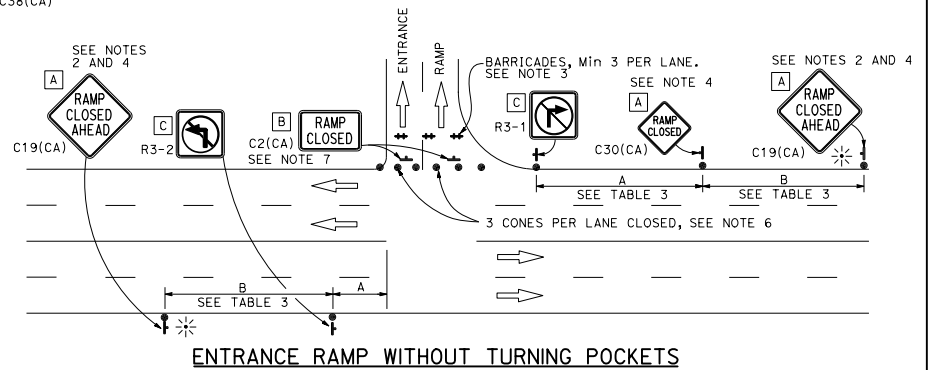
EXIT RAMP OR CONNECTOR



EXIT RAMP OR CONNECTOR WITH ADDITIONAL LANE



ENTRANCE RAMP WITH TURNING POCKETS



ENTRANCE RAMP WITHOUT TURNING POCKETS

NOTES:

- See Revised Standard Plan RSP T9 for tables.
- Use cone spacing X for taper segment, Y for tangent segment or Z for conflict situations, as appropriate, per Table 1, unless X, Y, or Z cone spacing is shown on this sheet.
- Provide at least one person to continuously maintain traffic control devices for lane closures.

STATE OF CALIFORNIA
DEPARTMENT OF TRANSPORTATION
**TRAFFIC CONTROL SYSTEM
FOR RAMP CLOSURE**
NO SCALE

RSP T14 DATED APRIL 20, 2018 SUPERSEDES STANDARD PLAN T14
DATED OCTOBER 30, 2015 - PAGE 255 OF THE STANDARD PLANS BOOK DATED 2015.

REVISED STANDARD PLAN RSP T14

2015 REVISED STANDARD PLAN RSP T14