

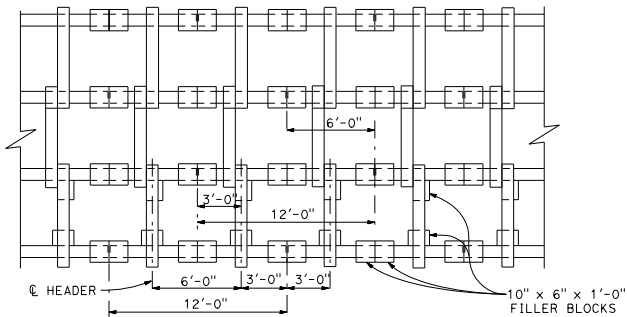
DIST	COUNTY	ROUTE	POST MILES TOTAL PROJECT	SHEET NO.	TOTAL SHEETS

Kathryn Orlowell
REGISTERED CIVIL ENGINEER

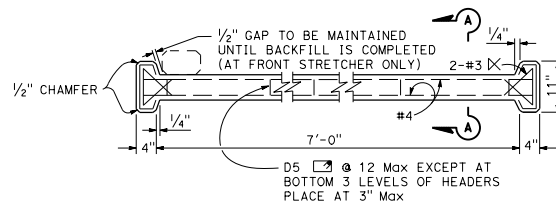
May 31, 2018
PLANS APPROVAL DATE

Kathryn Orlowell
No. C55599
Exp. 12-31-18
CIVIL
STATE OF CALIFORNIA

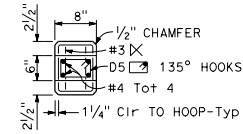
THE STATE OF CALIFORNIA OR ITS OFFICERS OR AGENTS SHALL NOT BE RESPONSIBLE FOR THE ACCURACY OR COMPLETENESS OF SCANNED COPIES OF THIS PLAN SHEET.



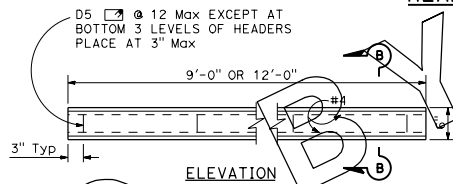
PARTIAL PLAN AT BASE
Type "B" shown, others similar



ELEVATION

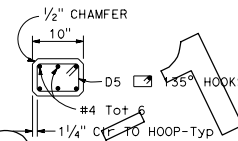


SECTION A-A



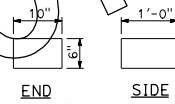
ELEVATION

HEADER DETAIL



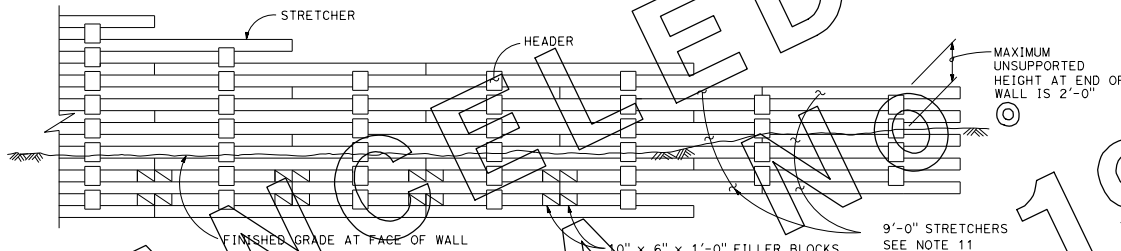
SECTION B-B

STRETCHER DETAIL

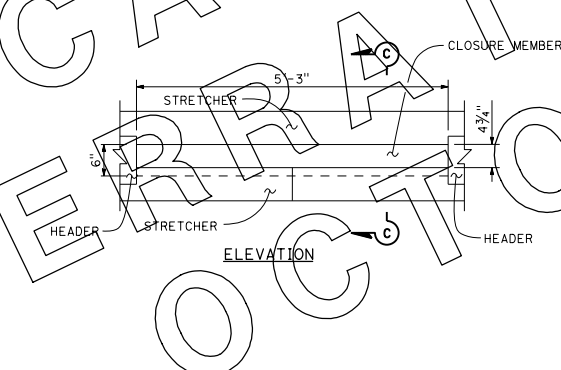


END SIDE

FILLER BLOCK DETAIL

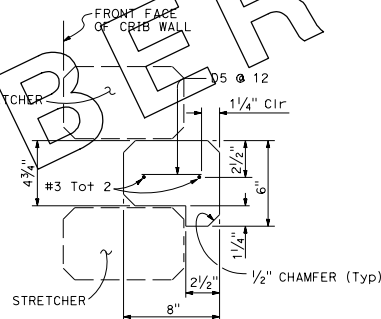


PARTIAL ELEVATION



ELEVATION

FRONT FACE CLOSURE MEMBER



SECTION C-C

NOTES:

- Design: AASHTO LRFD Bridge Design Specifications, 4th edition with the California Amendments.
- Reinforced Concrete: $f'_c = 60$ ksi
 $f_y = 36$ ksi
- Soil Parameters: $\phi = 34^\circ$
 $\delta = 25.5^\circ$
 $\lambda = 120$ pcf
 $A = 0.2g$
Lateral earth pressure determined by Coulomb's theory.
- Concrete to concrete bearing surfaces shall be finished to a smooth plane. The gap between bearing surfaces shall not exceed $1/8$ inch. Where a gap of $1/16$ inch to $1/8$ inch exists, a $1/16$ inch pad of asphalt felt or sheet neoprene shall be placed between the bearing surfaces. For wall Types B and C, a $1/16$ inch asphalt felt pad or sheet neoprene shall be placed between all concrete bearing surfaces below the 29'-10" level.
- All members may be manufactured to dimensions $1/8$ inch greater in thickness and stretchers $1/2$ inch less in length.
- Where an opening is specified in the face of a wall, special length stretchers and additional headers may be required.
- For non-tangent wall alignment, special length stretchers may be required.
- For non-tangent wall alignment and at locations where filler blocks are required, special length front face closure members may be required.
- The thickness of the lowest step for each wall type shall not be less than the dimension shown on these plans.
- Use "Front Face Closure Member" only when specified on project plans or in the Special Provisions.
- All stretchers are 12'-0" except as noted.
- Place 2 filler blocks midspan between stretchers in the bottom 2 levels of walls 9' high and higher.

STATE OF CALIFORNIA
DEPARTMENT OF TRANSPORTATION
**REINFORCED CONCRETE CRIB WALL
TYPES A, B, AND C
HEADER AND STRETCHER DETAILS**

NO SCALE

C7B