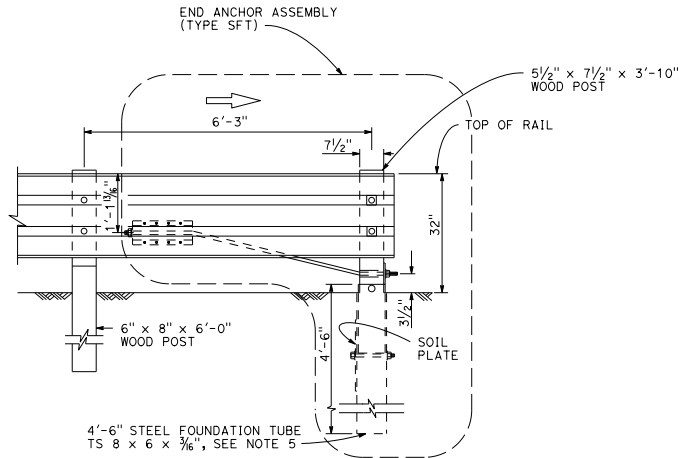


DIST	COUNTY	ROUTE	POST MILES TOTAL PROJECT	SHEET NO.	TOTAL SHEETS
<i>Randell D. Hiatt</i> REGISTERED CIVIL ENGINEER					
October 19, 2018 PLANS APPROVAL DATE					
No. C50200 Exp. 6-30-19 CIVIL					
<small>THE STATE OF CALIFORNIA OR ITS OFFICERS OR AGENTS SHALL NOT BE RESPONSIBLE FOR THE ACCURACY OR COMPLETENESS OF SCANNED COPIES OF THIS PLAN SHEET.</small>					

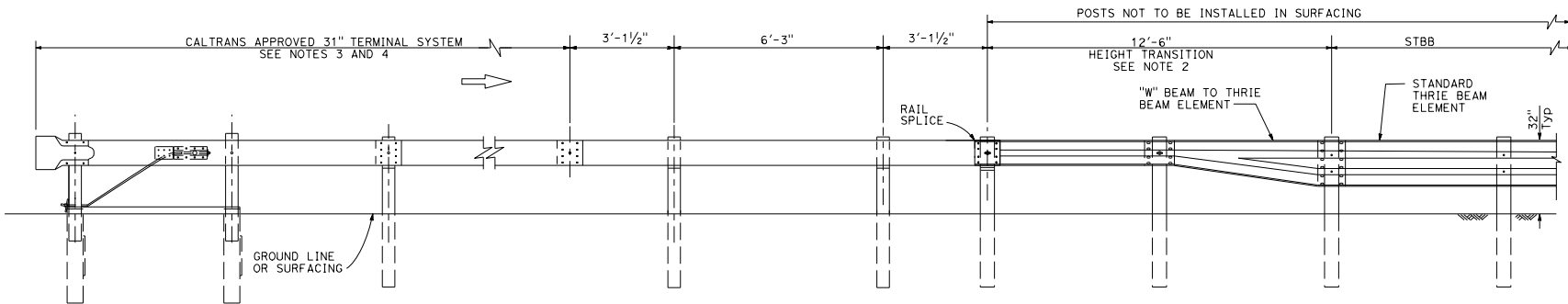


**END ANCHOR FOR TRAFFIC DEPARTURE END
OF SINGLE THRIE BEAM BARRIER**

(For one-way roadways)
See Note 1

NOTES:

- For additional details of End Anchor Assembly (Type SFT), see Standard Plan A77S1.
- The "W" beam to thrie beam section is only required where the terminal system connection to the thrie beam barrier is a "W" beam rail.
- The type of terminal system to be used will be shown on the Project Plans.
- A Caltrans approved crash cushion should be used in place of a terminal system end treatment where the backside of the railing would be exposed to traffic.
- A 6'-0" length steel foundation tube, TS 8 x 6 x 3/16, without a soil plate, may be furnished and installed in place of the 4'-6" length steel foundation tube and soil plate shown. Minimum embedment of the 6'-0" length tube shall be 5'-9". A 3/8" ϕ hex head bolt and nut shall be installed in the hole in the 6'-0" length tube to keep the wood post from dropping into the tube.



**ELEVATION
END TREATMENT FOR TRAFFIC APPROACH END
OF SINGLE THRIE BEAM BARRIER**

STATE OF CALIFORNIA
DEPARTMENT OF TRANSPORTATION

**SINGLE THRIE BEAM BARRIER
END ANCHOR ASSEMBLY AND
TERMINAL SYSTEM
END TREATMENT**

NO SCALE

RSP A78E1 DATED OCTOBER 19, 2018 SUPERSEDES STANDARD PLAN A78E1
DATED MAY 31, 2018 - PAGE 125 OF THE STANDARD PLANS BOOK DATED 2018.

REVISED STANDARD PLAN RSP A78E1

2018 REVISED STANDARD PLAN RSP A78E1