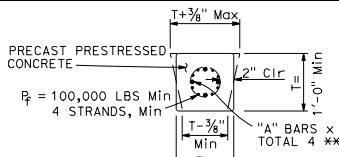


SECTION V-V

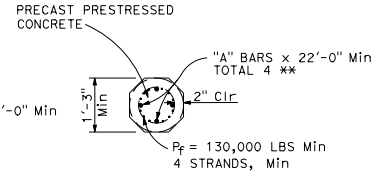
SECTION W-W

PP = Steel pipe pile



SECTION X-X

** To be in place when pile is cast



SECTION Y-Y

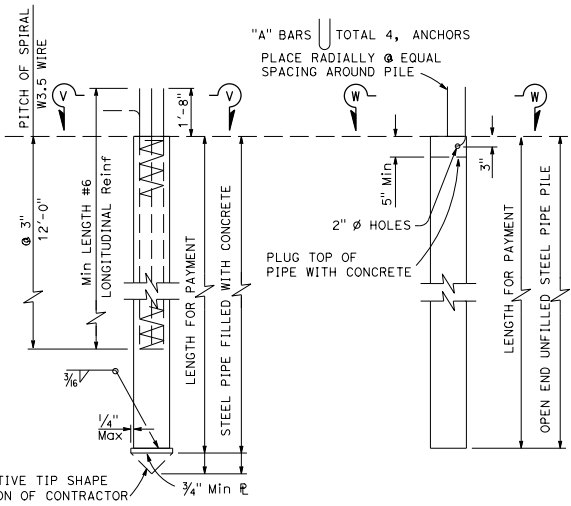
| | | | | | |
|------|--------|-------|--------------------------|-----------|--------------|
| DIST | COUNTY | ROUTE | POST MILES TOTAL PROJECT | SHEET NO. | TOTAL SHEETS |
| | | | | | |

Amir M. Malek
REGISTERED CIVIL ENGINEER
No. C62397
Exp. 9-30-19
CIVIL

October 19, 2018
PLANS APPROVAL DATE

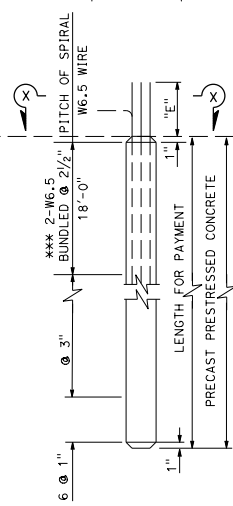
THE STATE OF CALIFORNIA OR ITS OFFICERS OR AGENTS SHALL NOT BE RESPONSIBLE FOR THE ACCURACY OR COMPLETENESS OF SCANNED COPIES OF THIS PLAN SHEET.

TO ACCOMPANY PLANS DATED _____



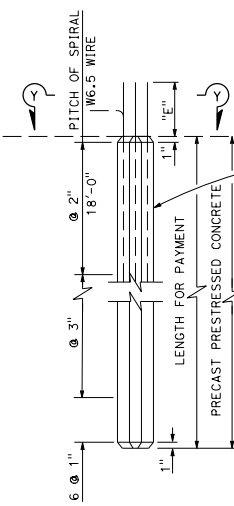
ALTERNATIVE "V"

ALTERNATIVE "W"

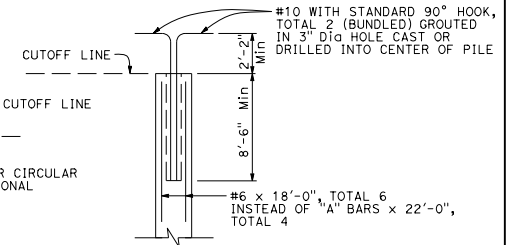


ALTERNATIVE "X"

*** W11.0 at 2" may be substituted



ALTERNATIVE "Y"



ALTERNATIVE PILE ANCHOR FOR PRESTRESSED PILES

DESIGN NOTES

PRECAST PRESTRESSED PILES

P_f = Prestressing force (after losses) If section used is larger than the minimum section shown, then " P_f " shall provide 700 psi minimum.
Concrete Strength: f'_c @ 28 days = 6,000 psi (Alternative "X")
5,000 psi (Alternative "Y")
 f'_{ci} @ transfer = 4,000 psi

REINFORCED CONCRETE

f'_c = 4,000 psi
 f_y = 60,000 psi

STEEL PIPE PILE

F_y (Minimum yield strength) = 45,000 psi
 F_u (Minimum tensile strength) = 66,000 psi

DESIGN CAPACITY

Class 90
Compression = 90 kip (Service state)
= 180 kip (Nominal axial structural resistance)
Tension = 36 kip (Service state)
= 90 kip (Nominal axial structural resistance)

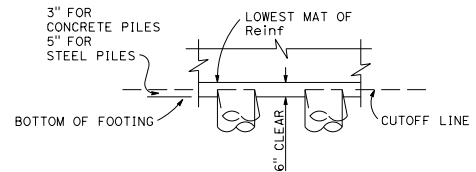
Class 140
Compression = 140 kip (Service state)
= 280 kip (Nominal axial structural resistance)
Tension = 56 kip (Service state)
= 140 kip (Nominal axial structural resistance)

STATE OF CALIFORNIA
DEPARTMENT OF TRANSPORTATION

**PILE DETAILS
CLASS 90 AND CLASS 140
NO SCALE**

RSP B2-5 DATED OCTOBER 19, 2018 SUPERSEDES STANDARD PLAN B2-5
DATED MAY 31, 2018 - PAGE 323 OF THE STANDARD PLANS BOOK DATED 2018.

REVISED STANDARD PLAN RSP B2-5



PILE EMBEDMENT

| | REQUIRED NOMINAL RESISTANCE (TENSION) * | |
|---------------|---|----------------------|
| | 60 kips OR LESS | GREATER THAN 60 kips |
| "A" BARS | #6 | #8 |
| "E" DIMENSION | 1'-8" | 2'-8" |

* See Pile Data Table on the Project Plans for Nominal Resistance (Tension) Requirements

2018 REVISED STANDARD PLAN RSP B2-5