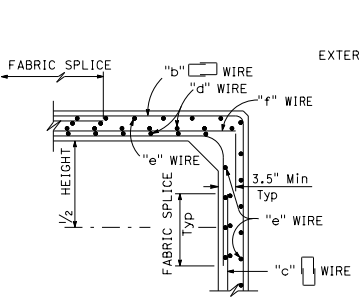
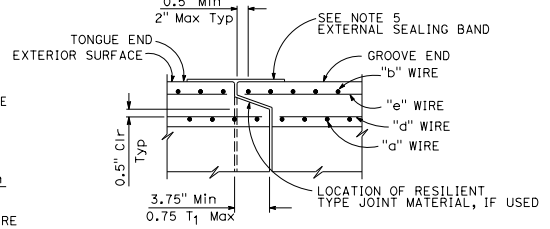


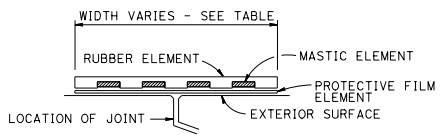
TYPICAL SECTION - SPANS 4'-0" THRU 12'-0"



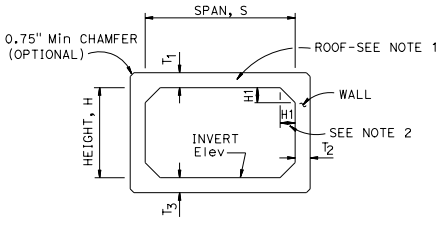
ALTERNATIVE DETAILING OPTION



END JOINT DETAIL



EXTERNAL SEALING BAND SCHEMATIC



SCHEMATIC

TABLE	
SPAN	EXTERNAL SEALING BAND WIDTH, Min
4'-6'	9"
7'-8'	11"
10'-12'	13"

SPAN, S	4'				5'				6'				7'				
	2'	3'	4'	5'	2'	3'	4'	5'	2'	3'	4'	5'	2'	3'	4'	5'	
MAXIMUM EARTH COVER	10'	20'	10'	20'	10'	20'	10'	20'	10'	20'	10'	20'	10'	20'	10'	20'	
CONCRETE (INCH)	ROOF	T1	6"	6"	6"	6"	6"	6"	6"	6"	6"	6"	6"	6"	6"	6"	
	SIDE WALL	T2	6"	6"	6"	6"	6"	6"	6"	6"	6"	6"	6"	6"	6"	6"	
	INVERT	T3	6"	6"	6"	6"	6"	6"	6"	6"	6"	6"	6"	6"	6"	6"	
MINIMUM WELDED WIRE FABRIC (Inch <sup>2</sup> /ft <sup>2</sup> )	"a"	.33	.47	.34	.49	.34	.50	.40	.62	.41	.62	.42	.64	.43	.64	.44	
	"b"	.23	.28	.23	.25	.21	.23	.26	.36	.24	.36	.24	.33	.24	.30	.28	
	"c"	.11	.11	.11	.12	.18	.24	.11	.11	.11	.11	.13	.23	.24	.34	.11	
	"d"	.16	.11	.16	.11	.16	.11	.17	.11	.18	.11	.18	.11	.18	.11	.18	.11
	"e"	.11	.11	.11	.11	.11	.11	.11	.11	.11	.11	.11	.11	.11	.11	.11	.11
* QUANTITY	Conc	.31	.34	.38	.37	.41	.44	.48	.51	.56	.60	.64	.63	.68	.73	.78	
Reinf	LB/LF	35	41	39	45	45	51	49	58	49	62	54	69	62	78	60	
** SOIL PRESSURE (ksf)		2.3	4.4	2.4	4.5	2.4	4.5	3.1	4.4	3.1	4.5	3.1	4.5	3.2	4.5	2.7	

SPAN, S	8'								10'								12'							
	4'	5'	6'	7'	8'	4'	5'	6'	7'	8'	4'	5'	6'	7'	8'	4'	5'	6'	7'	8'				
MAXIMUM EARTH COVER	10'	20'	10'	20'	10'	20'	10'	20'	10'	20'	10'	20'	10'	20'	10'	20'	10'	20'	10'	20'				
CONCRETE (INCH)	ROOF	T1	8.5"	8.5"	8.5"	8.5"	8.5"	8.5"	8.5"	8.5"	10"	10"	10"	10"	10"	10"	10"	10"	10"	10"				
	SIDE WALL	T2	8.5"	8.5"	8.5"	8.5"	8.5"	8.5"	8.5"	8.5"	10"	10"	10"	10"	10"	10"	10"	10"	10"	10"				
	INVERT	T3	8.5"	8.5"	8.5"	8.5"	8.5"	8.5"	8.5"	8.5"	10"	10"	10"	10"	10"	10"	10"	10"	10"	10"				
MINIMUM WELDED WIRE FABRIC (Inch <sup>2</sup> /ft <sup>2</sup> )	"a"	.55	.87	.56	.90	.57	.92	.58	.93	.58	.94	.66	1.07	.67	1.10	.69	1.13	.70	1.14	.71				
	"b"	.37	.59	.35	.55	.33	.52	.33	.52	.36	.57	.45	.74	.43	.70	.41	.67	.40	.64	.43				
	"c"	.11	.11	.11	.11	.20	.31	.31	.42	.38	.62	.11	.11	.11	.22	.31	.36	.42	.40	.62	.54			
	"d"	.19	.11	.19	.11	.20	.11	.20	.11	.20	.11	.20	.11	.20	.11	.21	.11	.21	.11	.21	.11			
	"e"	.11	.11	.11	.11	.11	.11	.11	.11	.11	.11	.11	.11	.11	.11	.11	.11	.11	.11	.11	.11			
* QUANTITY	Conc	.78	.83	.88	.94	.99	1.10	1.17	1.23	1.29	1.35	1.41	1.56	1.63	1.70	1.78	1.85	1.93	2.00					
Reinf	LB/LF	93	129	97	133	105	148	117	161	131	189	133	191	138	196	148	212	191	225	176				
** SOIL PRESSURE (ksf)		2.5	4.6	2.5	4.6	2.5	4.6	2.5	4.6	3.8	4.6	3.8	4.7	3.8	4.7	4.6	4.7	3.9	4.7	3.9				

\* See Note 3      \*\* See Note 6

- NOTES:**
- The inside and outside surfaces of the RCB roof shall be marked "TOP".
  - H1 minimum shall equal the wall thickness. H1 maximum shall be 8" for spans through 8' and 14" for spans over 8'.
  - Quantities are approximate and for design purposes only.
  - For design and details not shown see Revised Standard Plan RSP D83B.
  - For external sealing band applications see Revised Standard Plan RSP A62C.
  - Soil pressures shown are factored per AASHTO LRFD and include soil weight of fill over box, self weight of box and live load where applicable.
  - If earth cover is less than 2', the concrete cover for the reinforcement at the top of top slab shall be 2" T1 in the Table shall have an additional 1" and quantities shall be revised accordingly in this case.

STATE OF CALIFORNIA  
DEPARTMENT OF TRANSPORTATION  
**PRECAST REINFORCED CONCRETE BOX CULVERT**  
NO SCALE

RSP D83A DATED OCTOBER 19, 2018 SUPERSEDES STANDARD PLAN D83A  
DATED MAY 31, 2018 - PAGE 224 OF THE STANDARD PLANS BOOK DATED 2010.  
**REVISED STANDARD PLAN RSP D83A**

2018 REVISED STANDARD PLAN RSP D83A

DIST	COUNTY	ROUTE	POST MILES TOTAL PROJECT	SHEET TOTAL SHEETS

REGISTERED CIVIL ENGINEER  
October 19, 2018  
PLANS APPROVAL DATE  
No. C59876  
Exp. 6-30-20  
CIVIL  
THE STATE OF CALIFORNIA OR ITS OFFICERS OR AGENTS SHALL NOT BE RESPONSIBLE FOR THE ACCURACY OR COMPLETENESS OF SCANNED COPIES OF THIS PLAN SHEET.