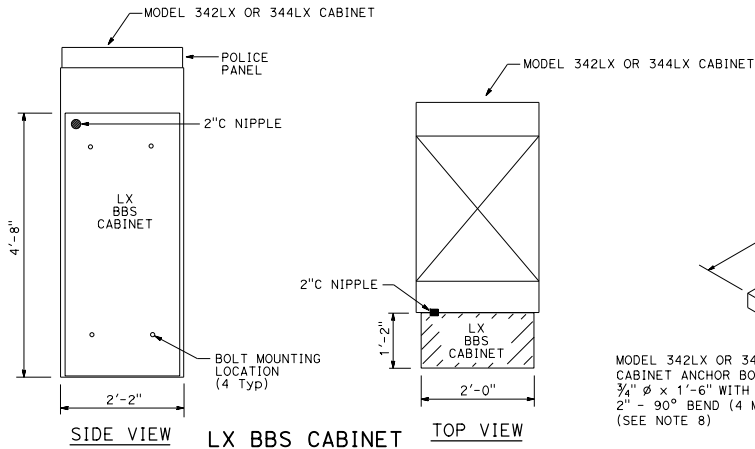


DIST	COUNTY	ROUTE	POST MILES TOTAL PROJECT	SHEET NO.	TOTAL SHEETS

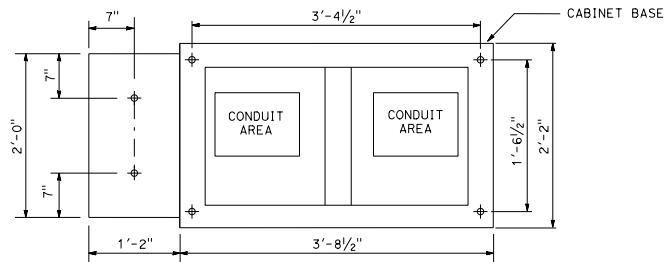
**H.R.F.**  
 REGISTERED ELECTRICAL ENGINEER  
 October 19, 2018  
 PLANS APPROVAL DATE  
 THE STATE OF CALIFORNIA OR ITS OFFICERS OR AGENTS SHALL NOT BE RESPONSIBLE FOR THE ACCURACY OR COMPLETENESS OF SCANNED COPIES OF THIS PLAN SHEET.

LICENSED PROFESSIONAL ENGINEER  
 Hamid Zolfaghari  
 No. E15636  
 Exp. 12-31-19  
 ELECTRICAL  
 STATE OF CALIFORNIA

TO ACCOMPANY PLANS DATED \_\_\_\_\_



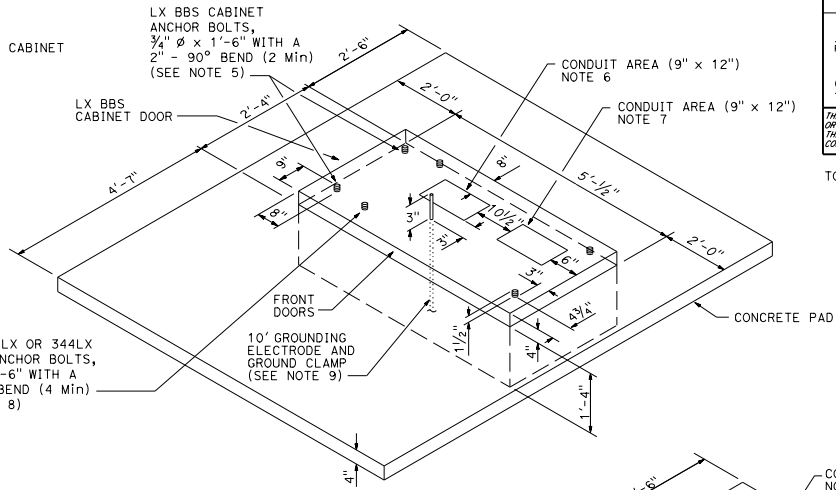
**LX BBS CABINET MOUNTED TO THE MODEL 342LX OR 344LX CABINETS**



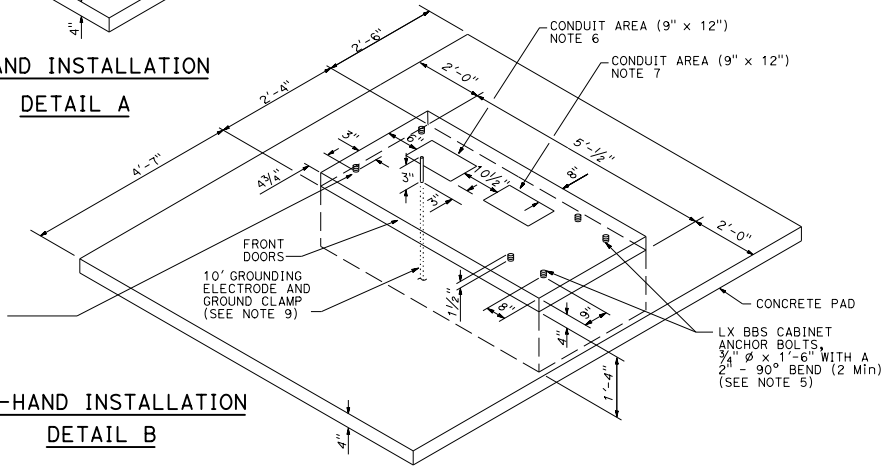
**BASE PLAN FOR MODEL 342LX OR 344LX CABINETS**

**NOTES:**

- Where telephone interconnect is required, a minimum of 5" clear vertical space shall be provided inside the cabinet for the equipment.
- Telephone interconnect conductors shall be enclosed in a 3/4" or larger conduit through the foundation. Type 4 conduit shall be used to separate telephone and power conductors in cabinets.
- The LX BBS cabinet shall be mounted to the Model 342LX or 344LX cabinet with four 18-8 stainless steel hex head, fully-threaded, 3/8"-16 x 1" bolts; two washers per bolt, designed for 3/8" bolts and are 18-8 stainless steel, 1" outside diameter, round, and flat; and one K-Lock nut per bolt that is 18-8 stainless steel and a hex-nut.
- All dimensions are nominal.
- The dimensions of the BBS cabinet shall be verified prior to constructing the foundation of the Model 342LX or 344LX cabinet foundation.
- Conduit area, to 120 V Service.
- Conduit area for the controller side of cabinet.
- For Type LX cabinets details, see "Transportation Electrical Equipment Specifications".
- Grounding electrode shall be placed 3 inches in front of the service conduit area.



**LEFT-HAND INSTALLATION  
DETAIL A**



**RIGHT-HAND INSTALLATION  
DETAIL B**

**MODEL 342LX OR 344LX CABINET FOUNDATION DETAIL WITH BATTERY BACKUP SYSTEM**

STATE OF CALIFORNIA  
DEPARTMENT OF TRANSPORTATION  
**ELECTRICAL SYSTEMS  
(CONTROLLER CABINET  
FOUNDATION DETAILS)**  
NO SCALE

RSP ES-3C2 DATED OCTOBER 19, 2018 SUPERSEDES STANDARD PLAN ES-3C2  
DATED MAY 31, 2018 - PAGE 489 OF THE STANDARD PLANS BOOK DATED 2018.  
**REVISED STANDARD PLAN RSP ES-3C2**

2018 REVISED STANDARD PLAN RSP ES-3C2