

WIRING DIAGRAM
DETAIL D

NOTES:

1. Dimensions are nominal.
2. The steel pedestal, base plate, and bolt circle for the telephone demarcation cabinet shall be the same as that shown for a Type 1-C Standard. The steel pedestal shall be 2'-1" to 2'-6" in length. Anchor bolts shall be 3/4" ϕ x 1'-6" with a 2" - 90° bend. Four bolts required per cabinet.
3. Telephone interconnect conductors shall be enclosed in a 3/4" or larger conduit through the foundation. Type 4 conduit shall be used to separate telephone and power conductors in the cabinet and pedestal.
4. Mount cabinet on Type G cabinet pedestal and foundation (see Revised Standard Plan RSP ES-3B).

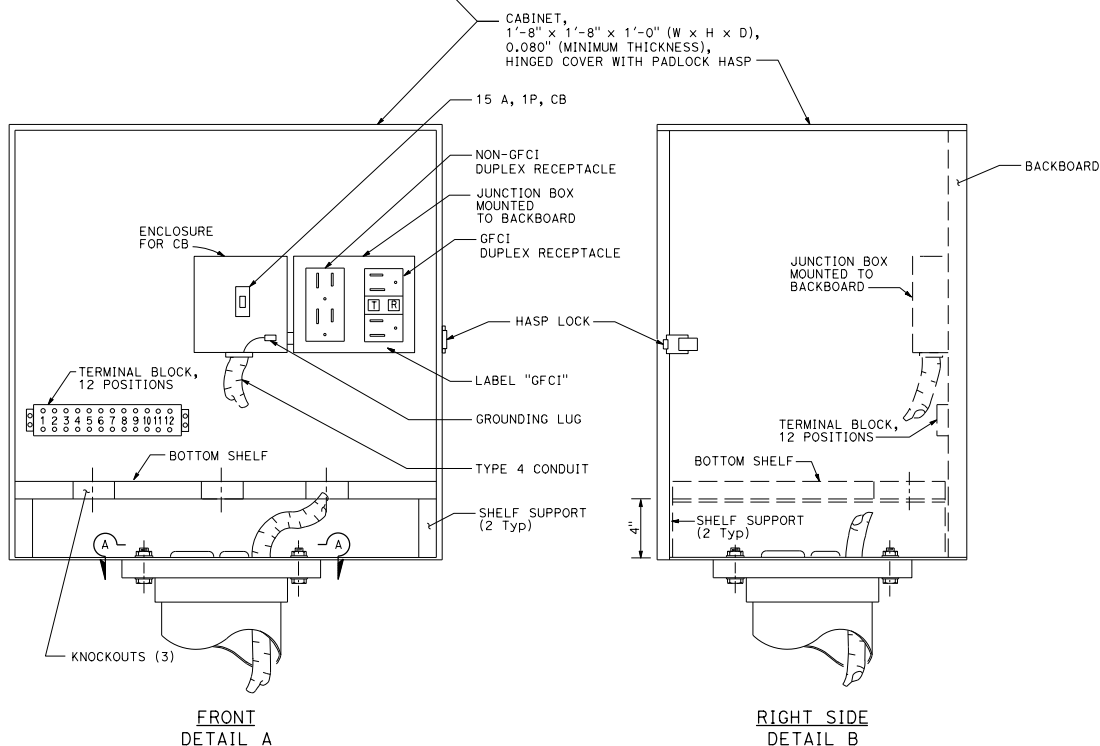
DIST	COUNTY	ROUTE	POST MILES TOTAL PROJECT	SHEET NO.	TOTAL SHEETS

REGISTERED ELECTRICAL ENGINEER
Hamid Zolfaghari
No. E15636
Exp. 12-31-19
ELECTRICAL
STATE OF CALIFORNIA

October 19, 2018
PLANS APPROVAL DATE

THE STATE OF CALIFORNIA OR ITS OFFICERS OR AGENTS SHALL NOT BE RESPONSIBLE FOR THE ACCURACY OR COMPLETENESS OF SCANNED COPIES OF THIS PLAN SHEET.

TO ACCOMPANY PLANS DATED _____



FASTENER SCHEDULE

BACKBOARD	4 - 3/4" (LENGTH) WOOD SCREWS
2 SHELF SUPPORTS	4 - 3/4" (LENGTH) WOOD SCREWS
JUNCTION BOX	4 - 1/2" (LENGTH) WOOD SCREWS
TERMINAL BLOCK	4 - 3/4" (LENGTH) WOOD SCREWS

STATE OF CALIFORNIA
DEPARTMENT OF TRANSPORTATION
**ELECTRICAL SYSTEMS
(TELEPHONE DEMARCATION
CABINET, TYPE A)**

NO SCALE

RSP ES-3D DATED OCTOBER 19, 2018 SUPERSEDES STANDARD PLAN ES-3D
DATED MAY 31, 2018 - PAGE 490 OF THE STANDARD PLANS BOOK DATED 2018.

REVISED STANDARD PLAN RSP ES-3D

2018 REVISED STANDARD PLAN RSP ES-3D