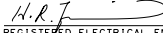


DIST	COUNTY	ROUTE	POST MILES TOTAL PROJECT	SHEET NO.	TOTAL SHEETS
 REGISTERED ELECTRICAL ENGINEER Hamid Zolfaghari No. E15636 Exp. 12-31-19 PROFESSIONAL ENGINEER ELECTRICAL STATE OF CALIFORNIA					
October 19, 2018 PLANS APPROVAL DATE					
<small>THE STATE OF CALIFORNIA OR ITS OFFICERS OR AGENTS SHALL NOT BE RESPONSIBLE FOR THE ACCURACY OR COMPLETENESS OF SCANNED COPIES OF THIS PLAN SHEET.</small>					

TO ACCOMPANY PLANS DATED \_\_\_\_\_

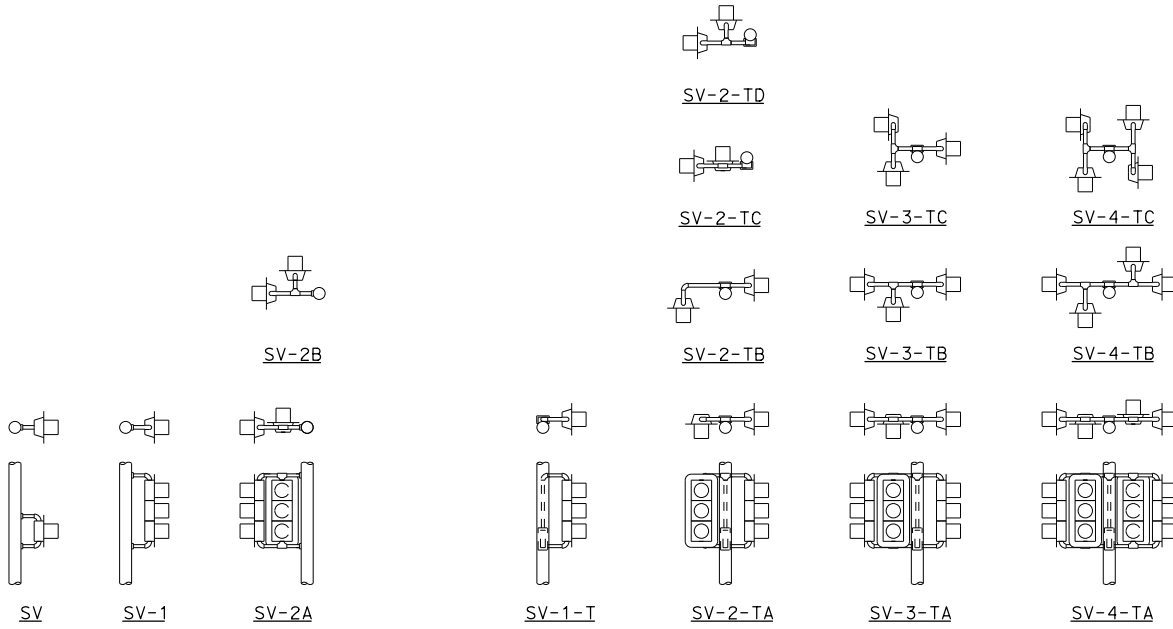
PLAN VIEW OF OTHER  
SIDE MOUNTINGS

**ABBREVIATIONS:**

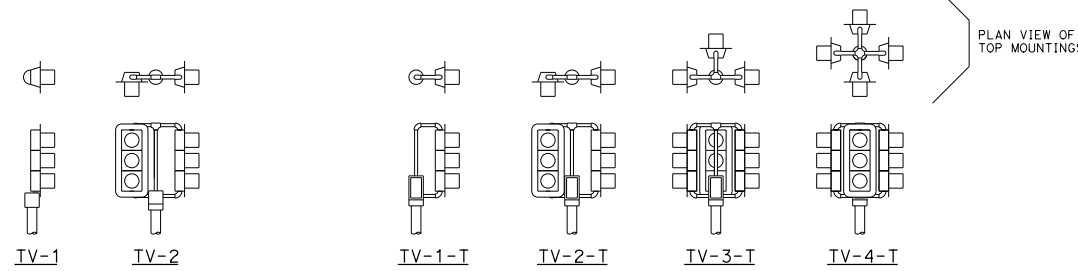
- SV SIDE MOUNTED SIGNAL HEADS
- T TERMINAL COMPARTMENT
- TV TOP MOUNTED SIGNAL HEADS
- 1, 2, 3, 4 NUMBER OF SIGNAL FACES  
(3 - SECTION, UNLESS OTHERWISE INDICATED)
- A, B, C, D CONFIGURATION OF SIGNALS

**NOTES:**

1. Mountings shall be oriented to provide maximum horizontal clearance to adjacent roadway.
2. See Revised Standard Plans RSP ES-4D and RSP ES-4E for attachment fitting details.



SIDE MOUNTINGS



TOP MOUNTINGS

PLAN VIEW OF  
TOP MOUNTINGS

STATE OF CALIFORNIA  
DEPARTMENT OF TRANSPORTATION  
**ELECTRICAL SYSTEMS  
(SIGNAL HEAD MOUNTING)**  
NO SCALE

RSP ES-4A DATED OCTOBER 19, 2018 SUPERSEDES STANDARD PLAN ES-4A  
DATED MAY 31, 2018 - PAGE 499 OF THE STANDARD PLANS BOOK DATED 2018.

**REVISED STANDARD PLAN RSP ES-4A**