

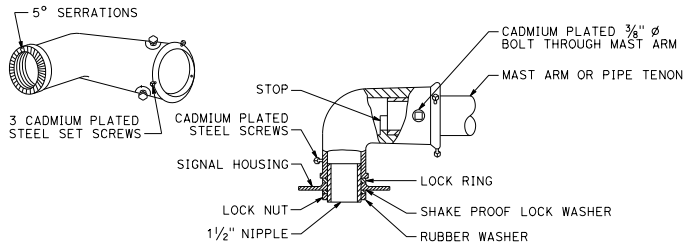
DIST	COUNTY	ROUTE	POST MILES TOTAL PROJECT	SHEET NO.	TOTAL SHEETS

H.R.F.
REGISTERED ELECTRICAL ENGINEER

October 19, 2018
PLANS APPROVAL DATE

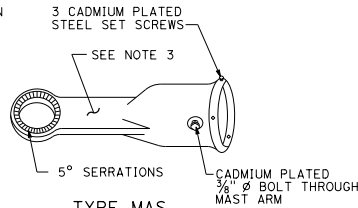
Hamid Zolfaghari
No. E15636
Exp. 12-31-19
REGISTERED PROFESSIONAL ENGINEER
ELECTRICAL
STATE OF CALIFORNIA

THE STATE OF CALIFORNIA OR ITS OFFICERS OR AGENTS SHALL NOT BE RESPONSIBLE FOR THE ACCURACY OR COMPLETENESS OF SCANNED COPIES OF THIS PLAN SHEET.



**TYPE MAT
MAST ARM MOUNTING**

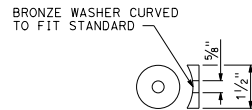
For 2 NPS pipe, see Note 1.



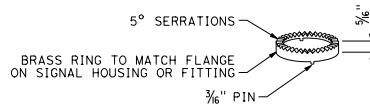
**TYPE MAS
MAST ARM MOUNTING**

For 2 NPS pipe, see Note 1.

SIGNAL SLIP FITTERS

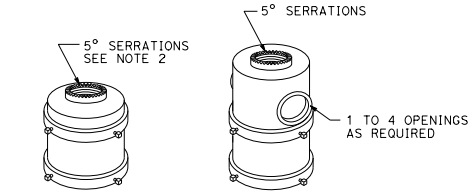


DETAIL C



LOCK RING

Use where locking ring is not integral with signal housing or fitting.



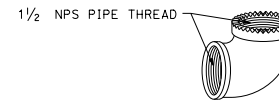
FOR ONE MOUNTING FOR MULTIPLE MOUNTINGS

TOP MOUNTINGS

For 4 NPS pipe, see Note 2.

NOTES:

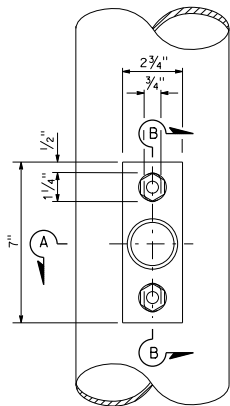
1. After mast arm signal has been plumbed and secured, drill $\frac{1}{8}$ " hole through mast arm tenon in line with slip fitter hole. Place a cadmium plated $\frac{3}{8}$ " ϕ galvanized bolt with washer under bolt head through hole and secure with washer, nut, and locknut. Seal openings between mast arm mountings and mast arm with mastic.
2. Threaded top mounted slip fitter openings shall be $\frac{1}{2}$ " NPS. Serrations in fittings shall match those on bottom of signal heads or in lock ring. Top opening shall be offset when backplate is used.
3. Wireway shall have a cross section area of 0.95 square inch minimum. Minimum width of $\frac{1}{2}$ ".



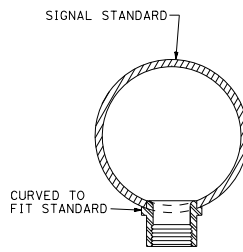
SPECIAL 90° ELBOW

One for each signal head, except those with special slip fitter mounting

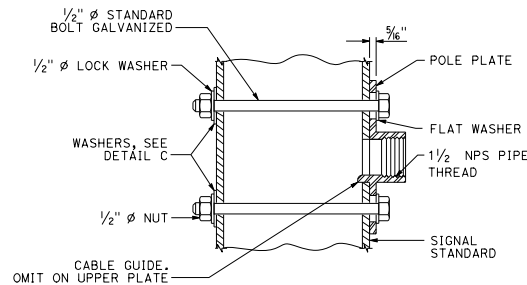
MISCELLANEOUS MOUNTING HARDWARE



TOP VIEW

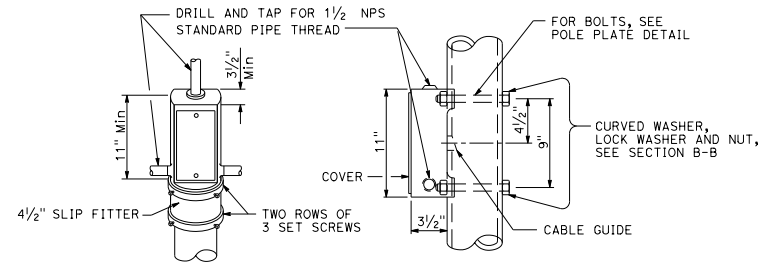


SECTION A-A



SECTION B-B

**POLE PLATE FOR SIDE MOUNTED SIGNAL HEAD
WITHOUT TERMINAL COMPARTMENT**



TOP MOUNTING

SIDE MOUNTING

TERMINAL COMPARTMENT

STATE OF CALIFORNIA
DEPARTMENT OF TRANSPORTATION
**ELECTRICAL SYSTEMS
(SIGNAL HEAD MOUNTING)**

NO SCALE

RSP ES-4D DATED OCTOBER 19, 2018 SUPERSEDES STANDARD PLAN ES-4D
DATED MAY 31, 2018 - PAGE 502 OF THE STANDARD PLANS BOOK DATED 2018.

REVISED STANDARD PLAN RSP ES-4D