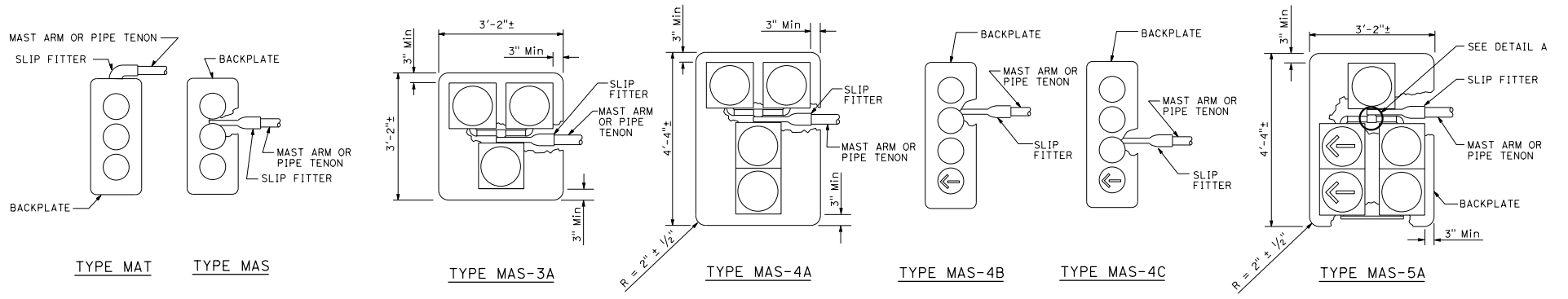


DIST	COUNTY	ROUTE	POST MILES TOTAL PROJECT	SHEET NO.	TOTAL SHEETS

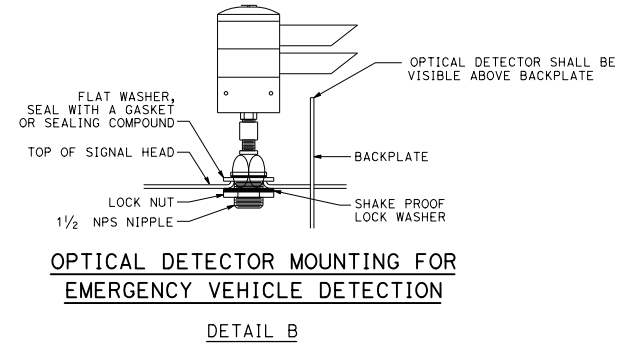
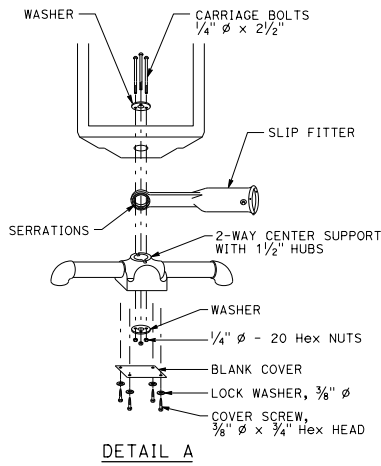
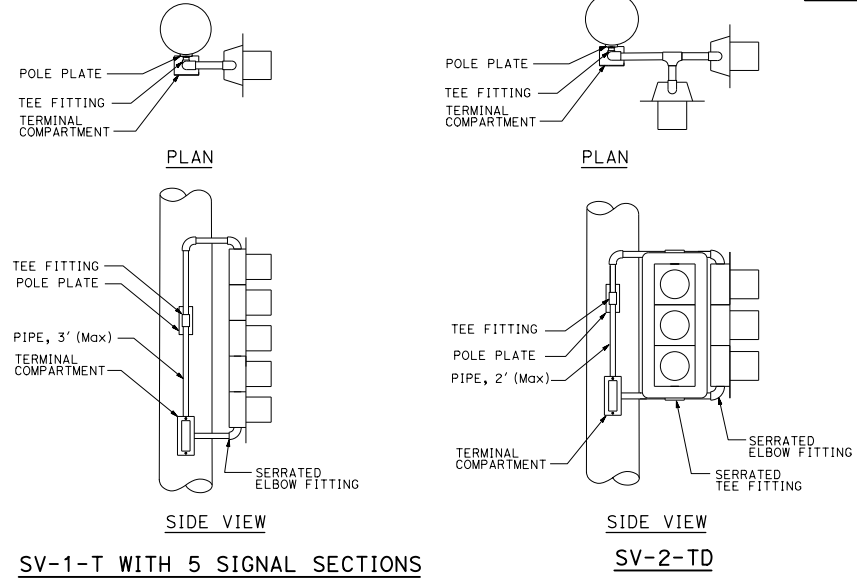
**H.R.F.**  
 REGISTERED ELECTRICAL ENGINEER  
 October 19, 2018  
 PLANS APPROVAL DATE  
 THE STATE OF CALIFORNIA OR ITS OFFICERS OR AGENTS SHALL NOT BE RESPONSIBLE FOR THE ACCURACY OR COMPLETENESS OF SCANNED COPIES OF THIS PLAN SHEET.

Hamid Zolfaghar  
 No. E15636  
 Exp. 12-31-19  
 REGISTERED PROFESSIONAL ENGINEER  
 ELECTRICAL  
 STATE OF CALIFORNIA

TO ACCOMPANY PLANS DATED \_\_\_\_\_



**MAST ARM MOUNTINGS**



STATE OF CALIFORNIA  
 DEPARTMENT OF TRANSPORTATION  
**ELECTRICAL SYSTEMS  
 (SIGNAL HEADS AND  
 OPTICAL DETECTOR MOUNTING)**  
 NO SCALE

RSP ES-4E DATED OCTOBER 19, 2018 SUPERSEDES STANDARD PLAN ES-4E  
 DATED MAY 31, 2018 - PAGE 503 OF THE STANDARD PLANS BOOK DATED 2018.  
**REVISED STANDARD PLAN RSP ES-4E**

2018 REVISED STANDARD PLAN RSP ES-4E