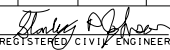

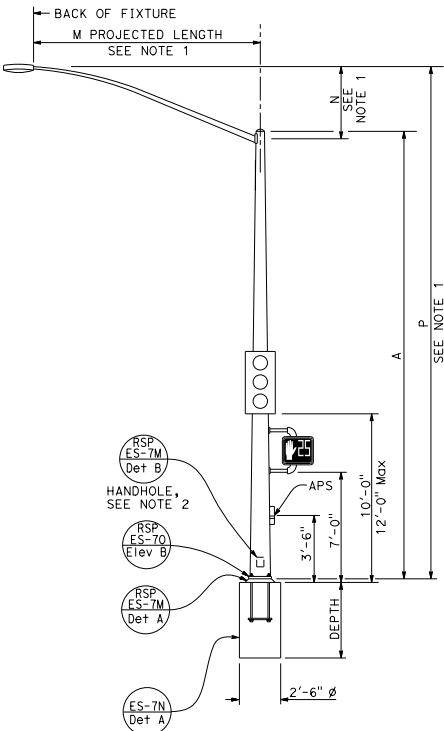


NOTES:

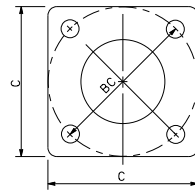
1. For additional notes, details and data for Type 15TS and Type 21TS Standards, see Standard Plan ES-6A.
2. Handhole shall be located on the downstream side of traffic.

Dist	COUNTY	ROUTE	POST MILES TOTAL PROJECT	SHEET NO.	TOTAL SHEETS
 REGISTERED CIVIL ENGINEER					
October 19, 2018 PLANS APPROVAL DATE					
					
<small>THE STATE OF CALIFORNIA OR ITS OFFICERS OR AGENTS SHALL NOT BE RESPONSIBLE FOR THE ACCURACY OR COMPLETENESS OF SCANNED COPIES OF THIS PLAN SHEET.</small>					

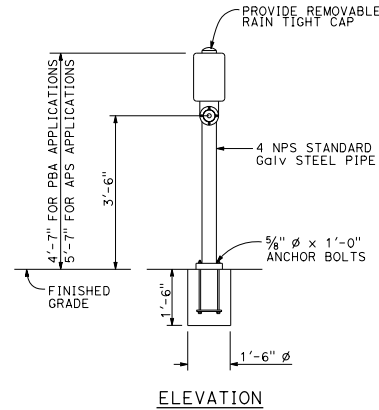
TO ACCOMPANY PLANS DATED _____



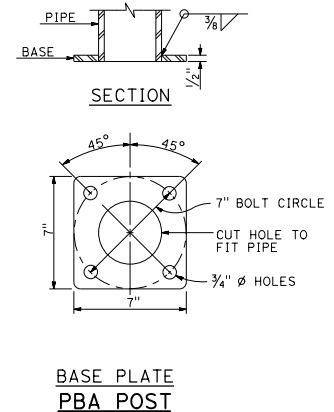
TYPE 15TS AND 21TS STANDARD
ELEVATION A
(See Note 1)



BASE PLATE
TYPE 15TS AND 21TS
DETAIL A



PUSH BUTTON ASSEMBLY POST
DETAIL B



POLE TYPE	POLE DATA			WALL THICKNESS	BASE PLATE DATA			ANCHOR BOLT SIZE	DEPTH
	A HEIGHT	Min OD	TOP		C	BC = BOLT CIRCLE	THICKNESS		
15TS	30'-0"	8"	3 1/8"	0.1793"	1'-1 1/2"	1'-0"	2"	1 1/2" ø x 42"	7'-6"
21TS	35'-0"	9 3/8"	3 3/8"		1'-3"	1'-2"			8'-6"

STATE OF CALIFORNIA
DEPARTMENT OF TRANSPORTATION
ELECTRICAL SYSTEMS
**(SIGNAL AND LIGHTING STANDARD, TYPE TS,
AND PUSH BUTTON ASSEMBLY POST)**

NO SCALE

RSP ES-7A DATED OCTOBER 19, 2018 SUPERSEDES STANDARD PLAN ES-7A
DATED MAY 31, 2018 - PAGE 515 OF THE STANDARD PLANS BOOK DATED 2018.

REVISED STANDARD PLAN RSP ES-7A

2018 REVISED STANDARD PLAN RSP ES-7A