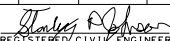


DIST	COUNTY	ROUTE	POST MILES TOTAL PROJECT	SHEET TOTAL SHEETS

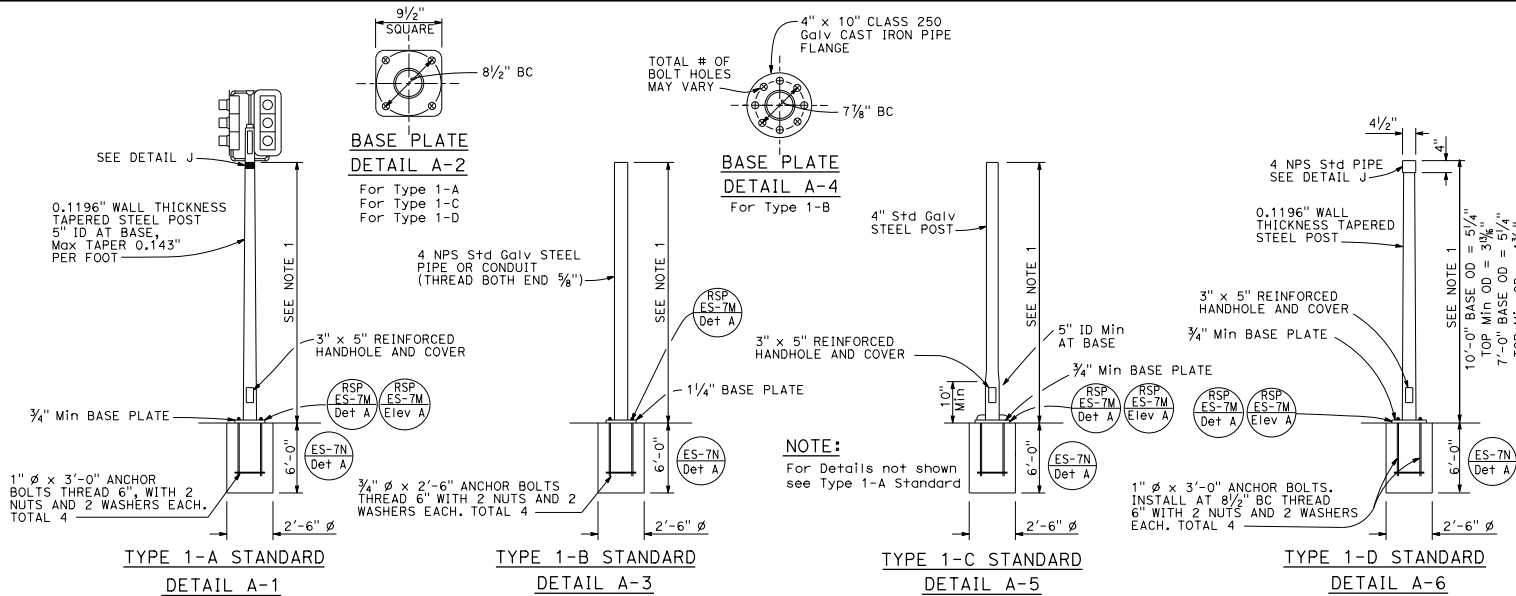

 REGISTERED CIVIL ENGINEER
 No. C6793
 Exp. 3-31-20
 CIVIL
 STATE OF CALIFORNIA

October 19, 2018
 PLANS APPROVAL DATE
 THE STATE OF CALIFORNIA OR ITS OFFICERS OR AGENTS SHALL NOT BE RESPONSIBLE FOR THE ACCURACY OR COMPLETENESS OF SCANNED COPIES OF THIS PLAN SHEET.

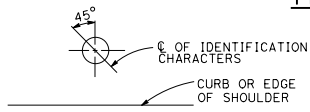
TO ACCOMPANY PLANS DATED _____

NOTES:

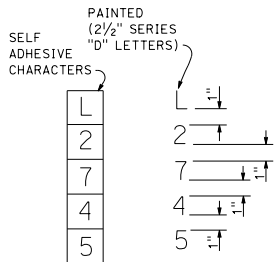
- Standards shall be 12'-0"±2" for flashing beacons, 10'-0"±2" for vehicle signals, and 7'-0"±2" for pedestrian signals unless shorter pole is noted on project plans.
- Top of standards shall be 4" OD.
- Conduits shall extend 2" maximum above finished surface of foundation and for Types 1-A, 1-C and 1-D shall be sloped toward handhole.
- Anchor bolts shall be bonded to conduit or grounding conductor.
- For additional notes and details, see Revised Standard Plan RSP ES-7M, and Standard Plan ES-7N.
- Pour foundation concrete against undisturbed soil.
- For standards with handhole, locate in the downstream side of traffic.
- Coupling nuts to be used only when shown or specified on project plans.



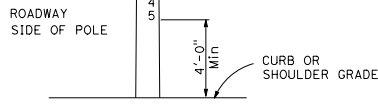
**TYPE 1 SIGNAL STANDARDS
DETAIL A**



DETAIL B-3

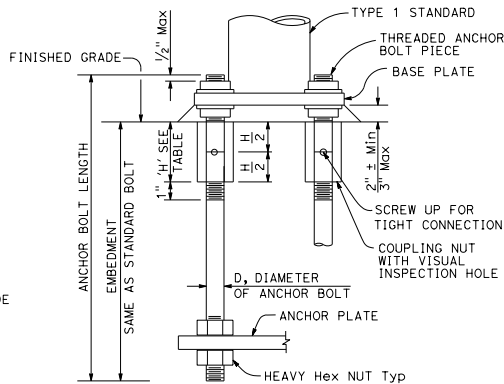


**IDENTIFICATION CHARACTER DETAIL
DETAIL B-1**

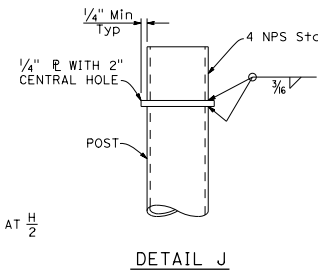


**TYPICAL IDENTIFICATION CHARACTER FORMAT
DETAIL B-2**

**LOCATION OF EQUIPMENT IDENTIFICATION CHARACTERS ON STANDARDS AND POSTS
DETAIL B**



**ANCHOR BOLTS WITH SLEEVE NUTS
DETAIL C
(See Note 8)**



DETAIL J

COUPLING NUT TABLE	
BOLT DIAMETER	NUT TABLE THICKNESS 'H'
3/4"	2 1/4"
1"	3"

STATE OF CALIFORNIA
 DEPARTMENT OF TRANSPORTATION
**ELECTRICAL SYSTEMS
 (SIGNAL AND LIGHTING STANDARD, TYPE 1
 AND EQUIPMENT IDENTIFICATION CHARACTERS)**

NO SCALE

RSP ES-7B DATED OCTOBER 19, 2018 SUPERSEDES STANDARD PLAN ES-7B DATED MAY 31, 2018 - PAGE 516 OF THE STANDARD PLANS BOOK DATED 2018.

REVISED STANDARD PLAN RSP ES-7B

2018 REVISED STANDARD PLAN RSP ES-7B