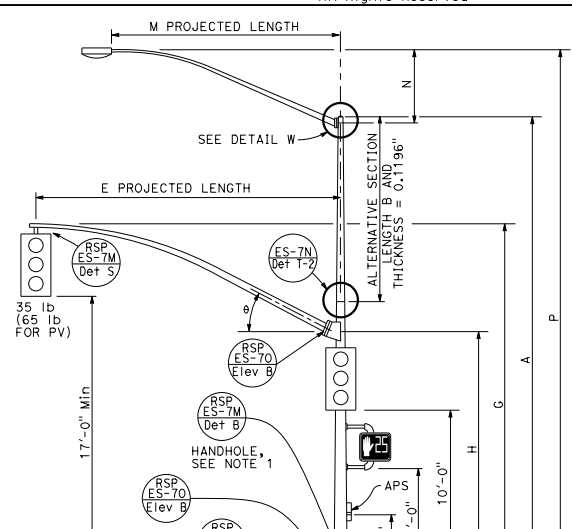
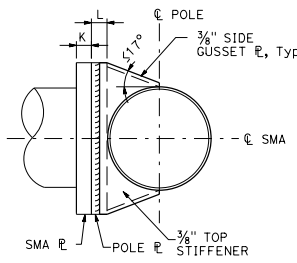


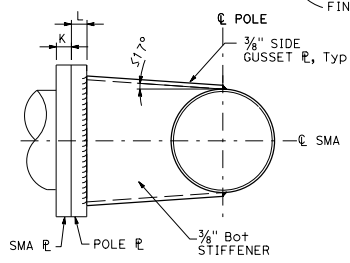
TYPE 16-1-100, 18-1-100
ELEVATION A



TYPE 19-1-100, 19A-1-100
ELEVATION B



SECTION B-B



SECTION C-C

E PROJECTED LENGTH	G MOUNTING HEIGHT	H	Min OD AT POLE	THICKNESS	I BOLT CIRCLE	HS CAP SCREWS	J PLATE SIZE	K MAST ARM R THICKNESS	L POLE R THICKNESS	θ
15'-0"	21'-8"±	17'-6"	7 3/8"	0.1793"	12"	1 1/4"-7NC-3"	1'-0"	1 1/4"	1 1/2"	23°
20'-0"	22'-8"±	16'-0"	8"							
25'-0"	22'-8"±	16'-0"	9"							
30'-0"	23'-0"±	16'-0"	10"							

M PROJECTED LENGTH	N RISE	Min OD AT POLE	THICKNESS	P MOUNTING HEIGHT
6'-0"	2'-0"±	3 1/4"	0.1196"	30'-0" POLE
8'-0"	2'-6"±	3 1/2"		35'-0" POLE
10'-0"	3'-3"±	3 7/8"		31'-6"±
12'-0"	4'-3"±	4 1/4"		36'-6"±
15'-0"	4'-9"±	4 1/4"		32'-0"±

POLE TYPE	LOAD CASE	WIND VELOCITY (mph)	POLE DATA				BASE PLATE DATA				LUMINAIRE MAST ARM		SIGNAL MAST ARM		CIDH PILE FOUNDATION		
			A HEIGHT	Min OD		THICKNESS	ALTERNATIVE SECTION		C	BC = BOLT CIRCLE	THICKNESS	ANCHOR BOLT SIZE	LUMINAIRE MAST ARM	SIGNAL MAST ARM	Dia	DEPTH	
				BASE	TOP		B LENGTH	BOTTOM									TOP
16-1-100	1	100	18'-6"	12"	9 3/8"	0.2391"	None	None	1'-6"	1'-4"	2"	1 3/4" ø x 42"	NONE	15'-0", [20'-0"]	3'-0"	9'-0"	
18-1-100			17'-0"	12"	9 3/8"	0.2391"	None	None	1'-6"	1'-4"	2"	1 3/4" ø x 42"	NONE	15'-0", [20'-0"]			
19-1-100			30'-0"	14"	9 3/4"	OR 0.25"	10'-0"	11 1/8"	9 3/4"	1'-10"	1'-8"	2 1/2"	2" ø x 42"	6'-15" [12'-0"]			25'-0", [30'-0"]
19A-1-100			35'-0"	14"	9"	OR 0.25"	15'-0"	11 1/8"	9"	1'-10"	1'-8"	2 1/2"	2" ø x 42"	6'-15" [15'-0"]			25'-0", [30'-0"]

□ INDICATES MAST ARM LENGTH TO BE USED UNLESS OTHERWISE NOTED ON PLANS.

- NOTES:**
- Handhole shall be located on the downstream side of traffic.
 - Δ = Luminaire mast arm skew -90° or +90° default 0°

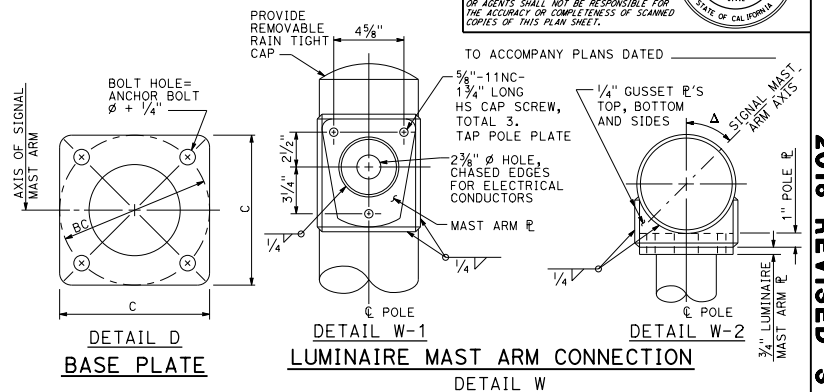
DIST	COUNTY	ROUTE	POST MILES TOTAL PROJECT	SHEET TOTAL SHEETS

October 19, 2018
PLANS APPROVAL DATE

Stanley P. Johnson
REGISTERED CIVIL ENGINEER
No. C51793
Exp. 3-31-20
CIVIL

TO ACCOMPANY PLANS DATED _____

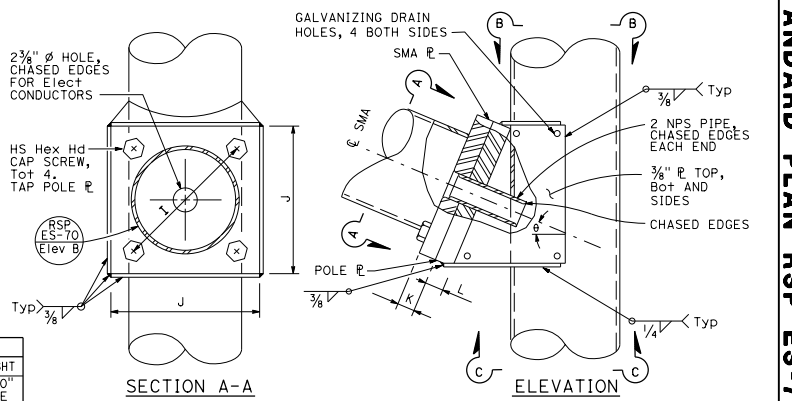
THE STATE OF CALIFORNIA OR ITS OFFICERS OR AGENTS SHALL NOT BE RESPONSIBLE FOR THE ACCURACY OR COMPLETENESS OF SCANNED COPIES OF THIS PLAN SHEET.



DETAIL D
BASE PLATE

DETAIL W-1
LUMINAIRE MAST ARM CONNECTION

DETAIL W-2
SIGNAL MAST ARM CONNECTION



SECTION A-A

SIGNAL MAST ARM CONNECTION

DETAIL A

STATE OF CALIFORNIA
DEPARTMENT OF TRANSPORTATION

ELECTRICAL SYSTEMS (SIGNAL AND LIGHTING STANDARD, CASE 1 SIGNAL MAST ARM LOADING, WIND VELOCITY = 100 MPH AND SIGNAL MAST ARM LENGTHS 15' TO 30')

NO SCALE

RSP ES-7C DATED OCTOBER 19, 2018 SUPERSEDES STANDARD PLAN ES-7C DATED MAY 31, 2018 - PAGE 517 OF THE STANDARD PLANS BOOK DATED 2018.

REVISED STANDARD PLAN RSP ES-7C

2018 REVISED STANDARD PLAN RSP ES-7C