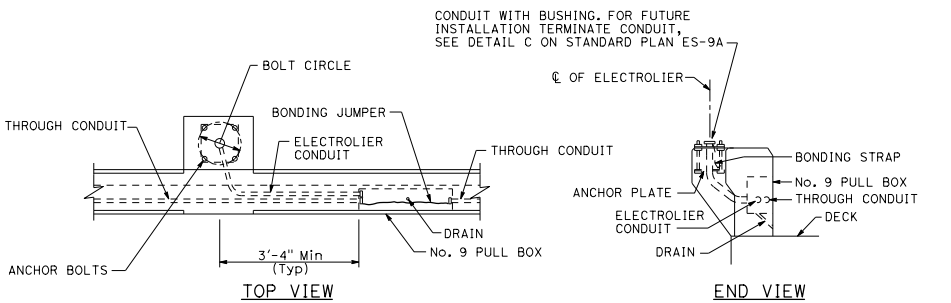


TOP VIEW END VIEW

**No. 3 1/2, 5, OR 6 PULL BOX INSTALLATION**

DETAIL A

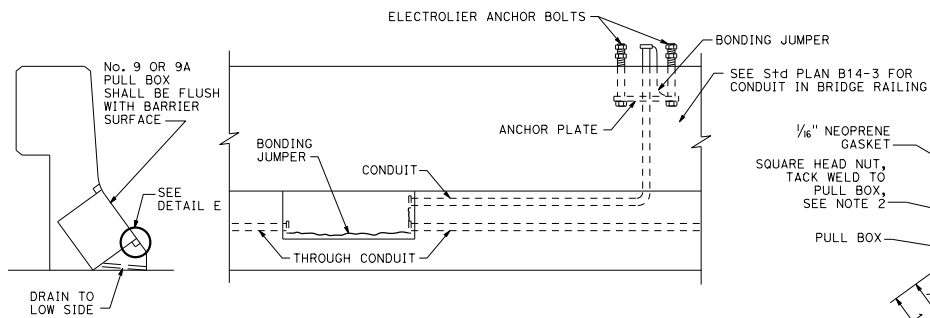


TOP VIEW

END VIEW

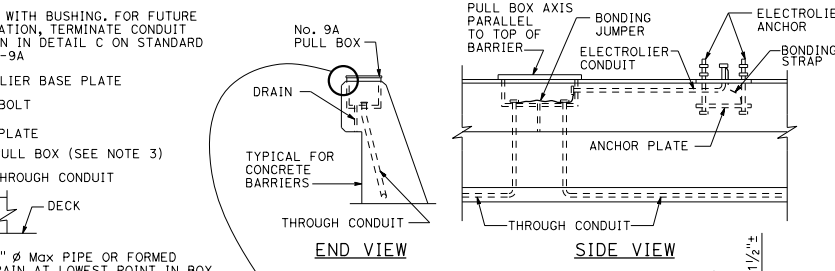
**No. 9 PULL BOX INSTALLATION**

DETAIL B



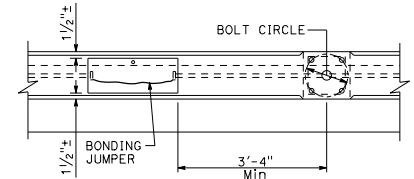
**INSTALLATION IN SLOPING PARAPETS**

DETAIL D

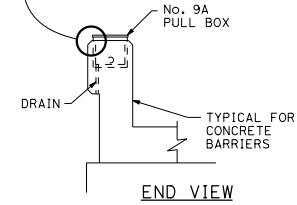
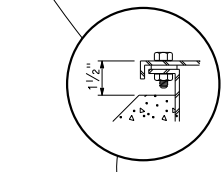


END VIEW

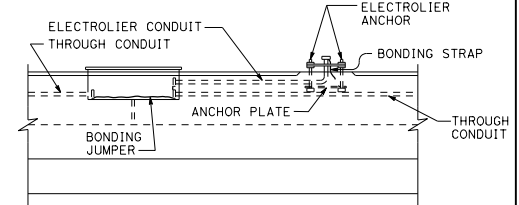
SIDE VIEW



TOP VIEW



END VIEW



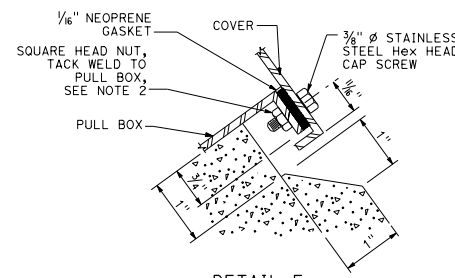
SIDE VIEW

**No. 9A PULL BOX INSTALLATION**

DETAIL C

**NOTES:**

1. Axis of pull box shall be parallel to top of barrier, sidewalk or railing.
2. See railing sheet for reinforcement and structural details at electroliers and pull boxes.
3. Top of pull boxes in sidewalk areas shall be flush with sidewalk. Modify base of pull box as required.
4. Boxes inside of vertical barrier or railing shall be closed during pouring of PCC with 1/4" plywood of sufficient size to provide 1:1 chamfer on 3 sides of cover. Upper edge of plywood shall fit against lower edge of raintight hood.
5. Use drain in center if box is horizontal, or at low end if box is inclined. When box is mounted in sloping parapet 1/2" elongated drain hole inside at center or near end as required for drainage.
6. For electrolier anchorage bolts and grouting details, see Standard Plan ES-6B.
7. See Standard Plan B14-3 for conduit in concrete barrier.



DETAIL E

DIST*	COUNTY	ROUTE	POST MILES TOTAL PROJECT	SHEET NO.	TOTAL SHEETS

REGISTERED ELECTRICAL ENGINEER  
 October 19, 2018  
 PLANS APPROVAL DATE  
 THE STATE OF CALIFORNIA OR ITS OFFICERS OR AGENTS SHALL NOT BE RESPONSIBLE FOR THE ACCURACY OR COMPLETENESS OF SCANNED COPIES OF THIS PLAN SHEET.

TO ACCOMPANY PLANS DATED \_\_\_\_\_

REGISTERED PROFESSIONAL ENGINEER  
 Hamid Zolfaghari  
 No. E15636  
 Exp. 12-31-19  
 ELECTRICAL  
 STATE OF CALIFORNIA

**ELECTRICAL SYSTEMS  
(STRUCTURE PULL BOX  
INSTALLATIONS)**

NO SCALE

RSP ES-9D DATED OCTOBER 19, 2018 SUPERSEDES STANDARD PLAN ES-9D  
 DATED MAY 31, 2018 - PAGE 538 OF THE STANDARD PLANS BOOK DATED 2018.

**REVISED STANDARD PLAN RSP ES-9D**

2018 REVISED STANDARD PLAN RSP ES-9D