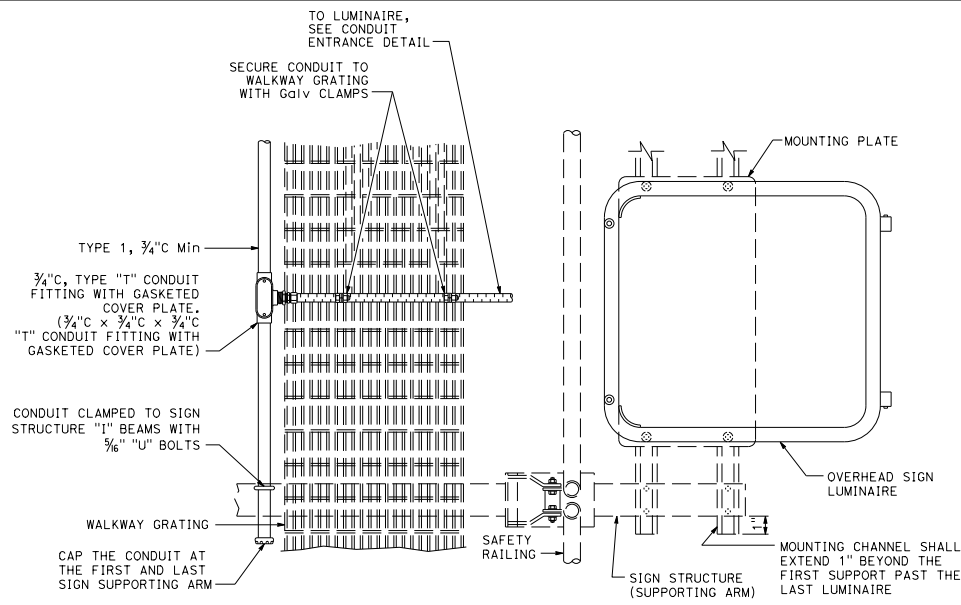
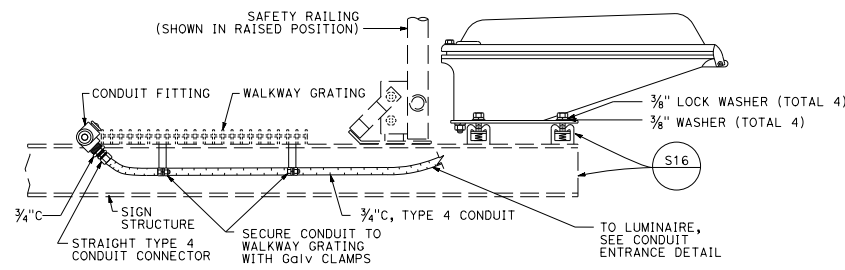


LENGTH OF SIGN PANEL	NUMBER OF OVERHEAD SIGN LUMINAIRE (EACH)	OVERHEAD SIGN LUMINAIRE SPACING SEE NOTES	
5'-0"	1	2'-6"	
6'-0"		3'-0"	
7'-0"		3'-6"	
8'-0"		4'-0"	
9'-0"		4'-6"	
10'-0"		5'-0"	
11'-0"		5'-6"	
12'-0"		6'-0"	
13'-0"		6'-6"	
14'-0"		7'-0"	
15'-0"		7'-6"	
16'-0"		8'-0"	
17'-0"		2	4'-3":8'-6"
18'-0"			4'-6":9'-0"
19'-0"			4'-9":9'-6"
20'-0"			5'-0":10'-0"
21'-0"	5'-3":10'-6"		
22'-0"	5'-6":11'-0"		
23'-0"	5'-9":11'-6"		
24'-0"	6'-0":12'-0"		
25'-0"	6'-3":12'-6"		
26'-0"	6'-6":13'-0"		
27'-0"	6'-9":13'-6"		
28'-0"	7'-0":14'-0"		
29'-0"	7'-3":14'-6"		
30'-0"	7'-6":15'-0"		
31'-0"	7'-9":15'-6"		
32'-0"	8'-0":16'-0"		
33'-0"	8'-3":16'-6"		
34'-0"	8'-6":17'-0"		
35'-0"	8'-9":17'-6"		
36'-0"	9'-0":18'-0"		
37'-0"	9'-3":18'-6"		
38'-0"	9'-6":19'-0"		
39'-0"	9'-9":19'-6"		
40'-0"	10'-0":20'-0"		
41'-0"	10'-3":20'-6"		
42'-0"	10'-6":21'-0"		
43'-0"	10'-9":21'-6"		
44'-0"	11'-0":22'-0"		
45'-0"	11'-3":22'-6"		
46'-0"	11'-6":23'-0"		
47'-0"	11'-9":23'-6"		
48'-0"	12'-0":24'-0"		
49'-0"	12'-3":24'-6"		
50'-0"	12'-6":25'-0"		
51'-0"	12'-9":25'-6"		
52'-0"	13'-0":26'-0"		
53'-0"	13'-3":26'-6"		
54'-0"	13'-6":27'-0"		
55'-0"	13'-9":27'-6"		
56'-0"	14'-0":28'-0"		
57'-0"	14'-3":28'-6"		
58'-0"	14'-6":29'-0"		
59'-0"	14'-9":29'-6"		
60'-0"	15'-0":30'-0"		
61'-0"	15'-3":30'-6"		
62'-0"	15'-6":31'-0"		
63'-0"	15'-9":31'-6"		
64'-0"	16'-0":32'-0"		



TOP VIEW



SIDE VIEW

OVERHEAD SIGN LUMINAIRE MOUNTING DETAIL (TYPICAL)

ALL BOLTS, NUTS, WASHERS AND OTHER HARDWARE SHALL BE SAE GRADE 5 AND CADMIUM-PLATED.

DIST	COUNTY	ROUTE	POST MILES TOTAL PROJECT	SHEET No.	TOTAL SHEETS

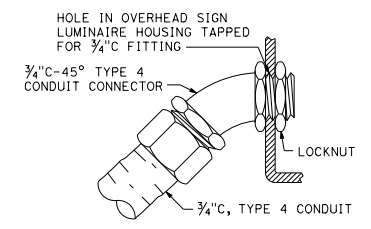
H.R.F.
 REGISTERED ELECTRICAL ENGINEER
 Hamid Zolfaghar
 No. E15636
 Exp. 12-31-19
 PROFESSIONAL ENGINEER
 ELECTRICAL
 STATE OF CALIFORNIA

October 19, 2018
 PLANS APPROVAL DATE
 THE STATE OF CALIFORNIA OR ITS OFFICERS OR AGENTS SHALL NOT BE RESPONSIBLE FOR THE ACCURACY OR COMPLETENESS OF SCANNED COPIES OF THIS PLAN SHEET.

TO ACCOMPANY PLANS DATED _____

NOTES:

- The first number listed is the dimension from the edge of the sign panel to the center of the end-most sign luminaire. The second number listed is the dimension between centers of successive sign luminaire.
- Where adjacent sign panels are spaced 1'-0" or less the combination of these panels (and spaces) shall be considered a single panel.
- Physical configuration and mounting details may vary from what is shown.



CONDUIT ENTRANCE DETAIL

STATE OF CALIFORNIA
DEPARTMENT OF TRANSPORTATION
ELECTRICAL SYSTEMS
(SIGN ILLUMINATION EQUIPMENT)
NO SCALE

RSP ES-15A DATED OCTOBER 19, 2018 SUPERSEDES STANDARD PLAN ES-15A DATED MAY 31, 2018 - PAGE 549 OF THE STANDARD PLANS BOOK DATED 2018.

REVISED STANDARD PLAN RSP ES-15A

2018 REVISED STANDARD PLAN RSP ES-15A