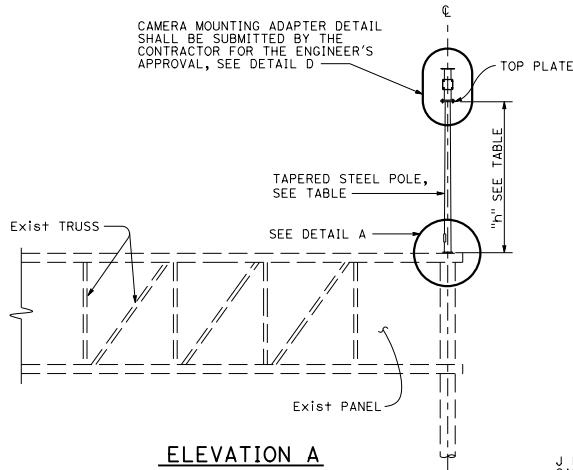
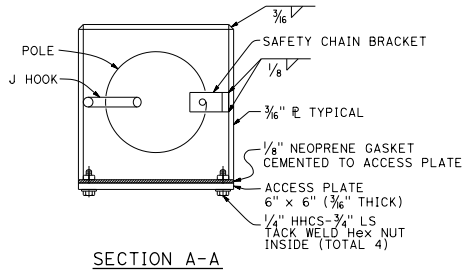


POLE EXTENSION TYPE	POLE DATA				HANDHOLE SIZE
	HEIGHT "h"	Min OD		THICKNESS	
		BASE	TOP		
CAMERA POLE 5	5'	4 $\frac{3}{16}$ "		0.1793"	3" x 5"
CAMERA POLE 10	10'	5 $\frac{1}{4}$ "	3 $\frac{3}{4}$ "		
CAMERA POLE 15	15'	5 $\frac{5}{16}$ "			

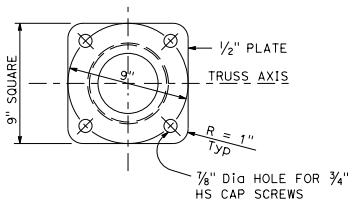
CAMERA MOUNTING ADAPTER DETAIL SHALL BE SUBMITTED BY THE CONTRACTOR FOR THE ENGINEER'S APPROVAL, SEE DETAIL D



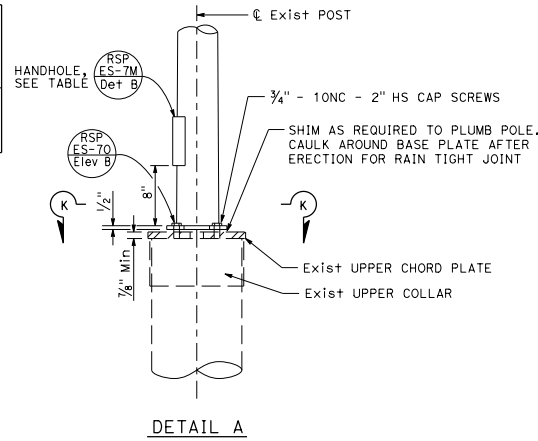
ELEVATION A



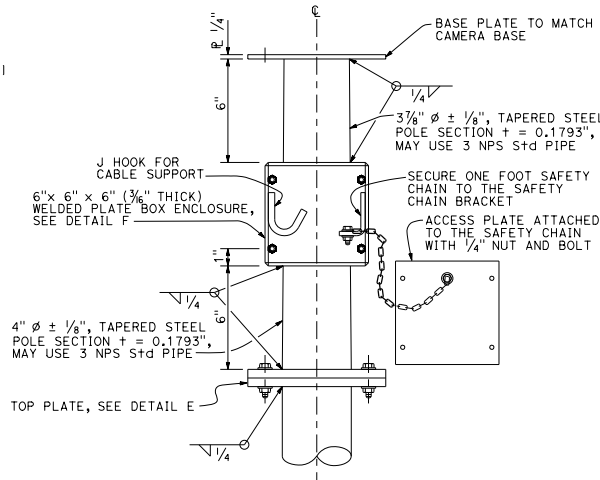
SECTION A-A



SECTION K-K



DETAIL A

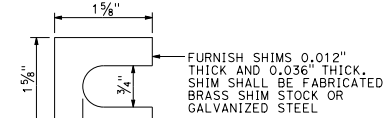


CAMERA MOUNTING ADAPTER

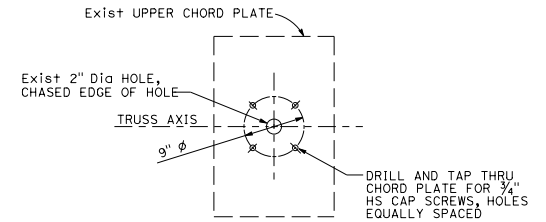
DETAIL D

NOTES:

1. Verify controlling field dimensions before ordering or fabricating any material.
2. Bolt hole locations may vary at the discretion of the Engineer.
3. See Std Plan S13.
4. For wind loading see Revised Standard Plan RSP ES-7M.
5. Materials (Structural Steel):
 - a. fy = 55,000 psi (tapered steel tube)
 - b. fy = 50,000 psi (unless otherwise noted)

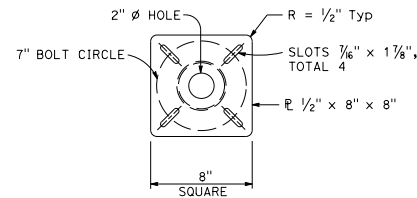


**SHIM
DETAIL B**



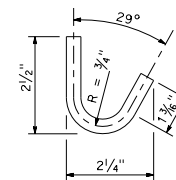
UPPER CHORD PLATE

DETAIL C
See Note 3



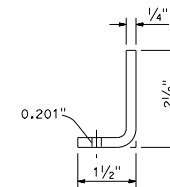
TOP PLATE

DETAIL E



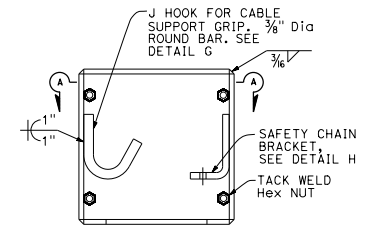
J HOOK

DETAIL G



SAFETY CHAIN BRACKET

DETAIL H



BOX ENCLOSURE

DETAIL F

Dist	COUNTY	ROUTE	POST MILES TOTAL PROJECT	SHEET TOTAL SHEETS

Stanley P. Johnson
 REGISTERED CIVIL ENGINEER
 No. C61793
 Exp. 3-31-20
 CIVIL
 STATE OF CALIFORNIA

October 19, 2018
 PLANS APPROVAL DATE
 THE STATE OF CALIFORNIA OR ITS OFFICERS OR AGENTS SHALL NOT BE RESPONSIBLE FOR THE ACCURACY OR COMPLETENESS OF SCANNED COPIES OF THIS PLAN SHEET.

TO ACCOMPANY PLANS DATED _____

STATE OF CALIFORNIA
DEPARTMENT OF TRANSPORTATION
**ELECTRICAL SYSTEMS
(CAMERA POLE 5' TO 15'
OVERHEAD SIGN MOUNTED)**

NO SCALE

RSP ES-16A DATED OCTOBER 19, 2018 SUPERSEDES STANDARD PLAN ES-16A DATED MAY 31, 2018 - PAGE 552 OF THE STANDARD PLANS BOOK DATED 2018.

REVISED STANDARD PLAN RSP ES-16A

2018 REVISED STANDARD PLAN RSP ES-16A