

POLE TYPE	POLE DATA			BASE PLATE DATA				CIDH		
	HEIGHT "h"	Min OD		THICKNESS	"c"	THICKNESS	ANCHOR BOLT SIZE	BC = BOLT CIRCLE	Dia	"d"
		BASE	TOP							
CAMERA POLE 25	25'	7 $\frac{3}{8}$ "	3 $\frac{3}{4}$ "	0.1793"	1'-1"	1"	1 $\frac{1}{2}$ " ϕ x 36"	11 $\frac{1}{2}$ "	2'-6"	7'-0"
CAMERA POLE 30	30'	8"			1'-1 $\frac{1}{2}$ "			1'-0"		7'-6"
CAMERA POLE 35	35'	8 $\frac{5}{8}$ "			1'-2"			1'-1"		8'-0"
CAMERA POLE 40	40'	9 $\frac{3}{8}$ "			1'-1 $\frac{1}{2}$ "			1'-1 $\frac{1}{2}$ "		8'-0"
CAMERA POLE 45	45'	10"			1'-2"		1'-2"		8'-6"	

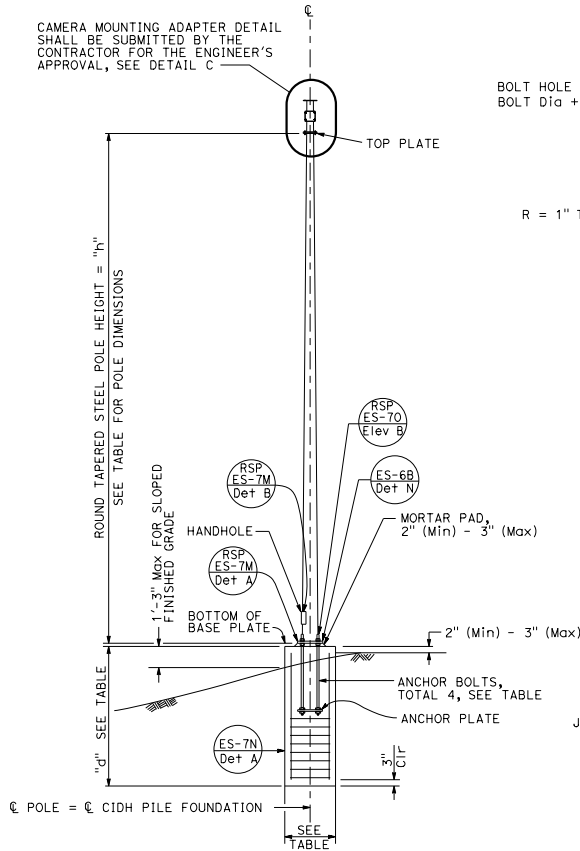
DIST	COUNTY	ROUTE	POST MILES TOTAL PROJECT	SHEET No.	TOTAL SHEETS

Stanley P. Johnson
 REGISTERED CIVIL ENGINEER
 No. C6793
 Exp. 3-31-20
 CIVIL
 STATE OF CALIFORNIA

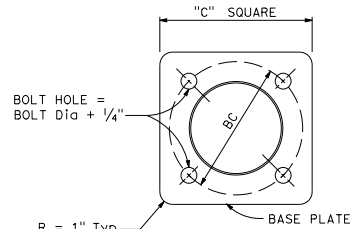
October 19, 2018
 PLANS APPROVAL DATE
 THE STATE OF CALIFORNIA OR ITS OFFICERS OR AGENTS SHALL NOT BE RESPONSIBLE FOR THE ACCURACY OR COMPLETENESS OF SCANNED COPIES OF THIS PLAN SHEET.

TO ACCOMPANY PLANS DATED _____

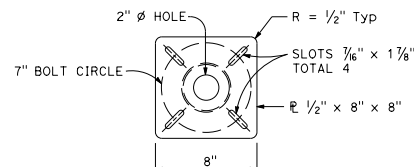
CAMERA MOUNTING ADAPTER DETAIL SHALL BE SUBMITTED BY THE CONTRACTOR FOR THE ENGINEER'S APPROVAL, SEE DETAIL C



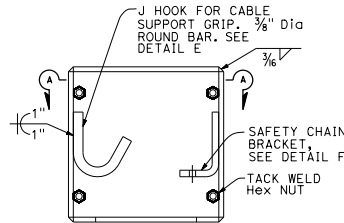
ELEVATION A



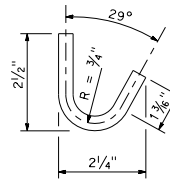
**BASE PLATE
DETAIL A**



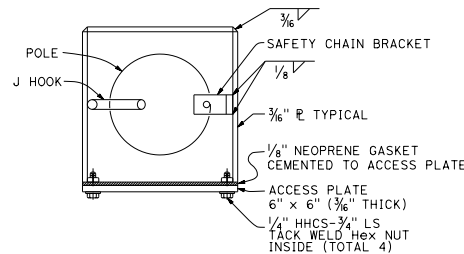
**TOP PLATE
DETAIL B**



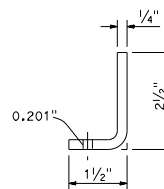
**BOX ENCLOSURE
DETAIL D**



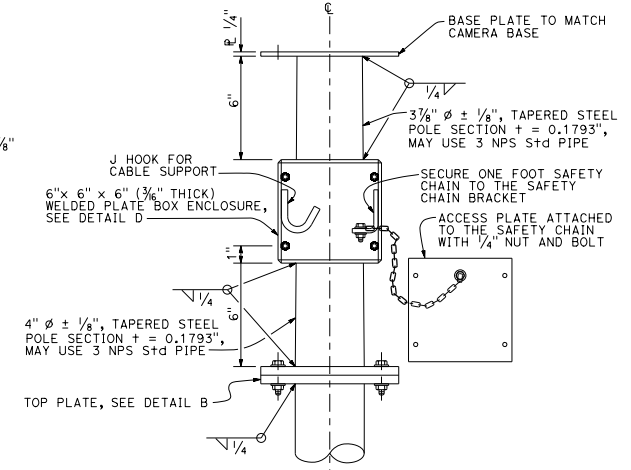
**J HOOK
DETAIL E**



SECTION A-A



**SAFETY CHAIN BRACKET
DETAIL F**



**CAMERA MOUNTING ADAPTER
DETAIL C**

NOTES:

1. Verify controlling field dimensions before ordering or fabricating any material.
2. During pole installation, the post shall be raked as necessary with the use of leveling nuts to provide a plumb pole axis.
3. For wind loading see Revised Standard Plan RSP ES-7M.
4. Materials (Structural Steel):
a. fy = 55,000 psi (tapered steel tube and anchor bolts)
b. fy = 50,000 psi (unless otherwise noted)
5. Materials (Reinforced Concrete):
a. f'c = 3,625 psi
b. fy = 60,000 psi

STATE OF CALIFORNIA
DEPARTMENT OF TRANSPORTATION
**ELECTRICAL SYSTEMS
(CAMERA POLE 25' TO 45')**

NO SCALE

RSP ES-16B DATED OCTOBER 19, 2018 SUPERSEDES STANDARD PLAN ES-16B DATED MAY 31, 2018 - PAGE 553 OF THE STANDARD PLANS BOOK DATED 2018.

REVISED STANDARD PLAN RSP ES-16B

2018 REVISED STANDARD PLAN RSP ES-16B