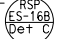
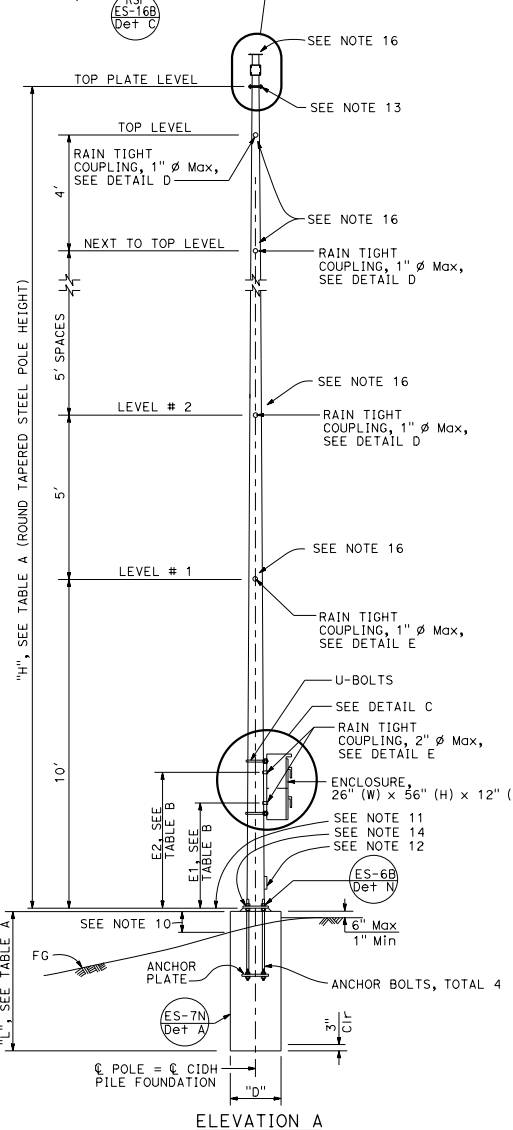


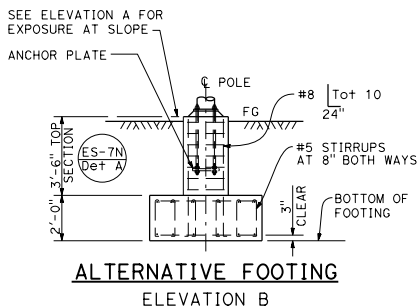
WHEN A CAMERA IS REQUIRED, THE CAMERA MOUNTING ADAPTER DETAIL SHALL BE SUBMITTED BY THE CONTRACTOR FOR THE ENGINEER'S APPROVAL, SEE 



POLE TYPE	POLE DATA				BASE PLATE DATA				CIDH PILE DATA			
	HEIGHT "H"	Min OD		THICKNESS	"C"	THICKNESS	ANCHOR BOLTS SIZE	BC = BOLT CIRCLE	"D"	"L"		
		BASE	TOP							LEVEL GROUND	UP TO 2:1	
VDS 30	30'	8"	3 $\frac{3}{8}$ "	0.1793"	1'-1 $\frac{1}{2}$ "	1 $\frac{1}{2}$ "	1 $\frac{1}{2}$ " $\phi$ x 3'-0"	1'-0"	2'-6"	6'-0"	8'-0"	
VDS 35	35'	8 $\frac{3}{4}$ "	3 $\frac{3}{8}$ "	0.1793"		2"				7'-0"	9'-0"	
VDS 40	40'	12"	5 $\frac{5}{8}$ "	0.1793"	1'-6"			1'-4"	3'-0"	9'-0"	11'-0"	

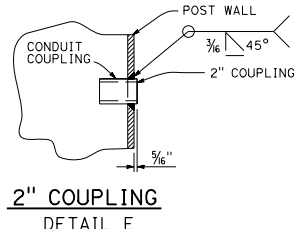
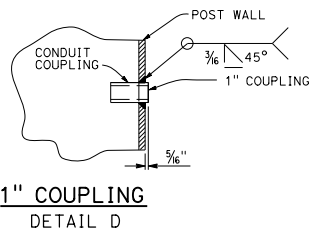
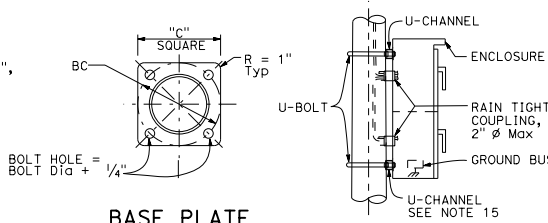
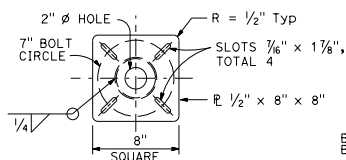
POLE TYPE	COUPLING	
	E1(Max)	E2(Max)
VDS 30		
VDS 35	3'-6"	4'-9"
VDS 40		

GROUND LEVEL	FOOTING SIZE (LENGTH x WIDTH x DEPTH)		REINFORCEMENT TOP & BOTTOM
	UP TO 2:1	10'-0" x 10'-0" x 2'-0"	
UP TO 2:1	10'-0" x 10'-0" x 2'-0"	15 - #5 EW	




LOCATION	MAXIMUM TOTAL EPA PER LEVEL (SQUARE FEET)	MAXIMUM TOTAL WEIGHT (lb)
LEVEL #1		
LEVEL #2	14	200
LEVEL #3	10 ***	
LEVEL #4 (VDS 35 AND VDS 40 ONLY)		
LEVEL #5 (VDS 40 ONLY)	2.5	50
NEXT TO TOP LEVEL		
TOP LEVEL		
ON TOP PLATE LEVEL **		

\* MAXIMUM HORIZONTAL EXTENT BEYOND POLE FACE IS 4 FEET.  
\*\* MAXIMUM EXTENT ABOVE TOP PLATE IS 3 FEET.  
\*\*\* 14 IF LEVEL #1 IS ZERO.



DIST	COUNTY	ROUTE	POST MILES TOTAL PROJECT	SHEET NO.	TOTAL SHEETS

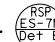
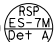
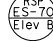


October 19, 2018  
PLANS APPROVAL DATE

Stanley P. Johnson  
No. C61793  
Exp. 3-31-20  
CIVIL  
REGISTERED PROFESSIONAL ENGINEER  
STATE OF CALIFORNIA

THE STATE OF CALIFORNIA OR ITS OFFICERS OR AGENTS SHALL NOT BE RESPONSIBLE FOR THE ACCURACY OR COMPLETENESS OF SCANNED COPIES OF THIS PLAN SHEET.

NOTES:

- All steel shall be galvanized after fabrication.
- The foundation shall be treated as level ground condition if the slope inclination is flatter than 4 : 1 (Horizontal : Vertical)
- For devices mounted and mounting heights, see TABLE B.
- For wind loading see Revised Standard Plan RSP ES-7M.
- Materials (Structural Steel):  
a. fy = 55,000 psi (tapered steel tube)  
b. fy = 50,000 psi (unless otherwise noted)
- Anchor bolts: fy = 55,000 psi
- Materials (Reinforced Concrete):  
a. f'c = 3,600 psi  
b. fy = 60,000 psi
- Verify all controlling field dimension before ordering of fabricating any material.
- When no barriers are used, the enclosure shall be located on the downstream side and perpendicular to the roadway.
- 1'-3" (Max) for sloped finished grade.
- Bottom of base plate.
- Handhole.  
- Top plate. Install a blank flange on the top plate when camera is not used.
- 
- U-channel with bracket.
- Use the manufacturer's Effective Projected Area (EPA) for attachments. Assign attachments to nearest level and sum each level, see Table D for limitations.

STATE OF CALIFORNIA  
DEPARTMENT OF TRANSPORTATION  
**ELECTRICAL SYSTEMS  
(VEHICLE DETECTION SYSTEM POLE  
30' TO 40')**

NO SCALE

RSP ES-16D DATED OCTOBER 19, 2018 SUPERSEDES STANDARD PLAN ES-16D  
DATED MAY 31, 2018 - PAGE 555 OF THE STANDARD PLANS BOOK DATED 2018.

**REVISED STANDARD PLAN RSP ES-16D**