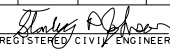

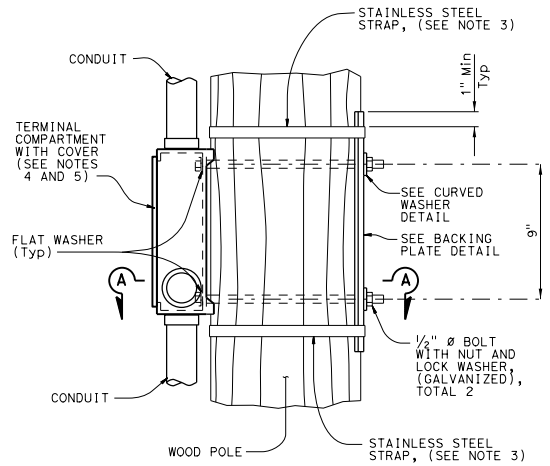


DIST	COUNTY	ROUTE	POST MILES TOTAL PROJECT	SHEET NO.	TOTAL SHEETS
 REGISTERED CIVIL ENGINEER					
October 19, 2018 PLANS APPROVAL DATE					
					
<small>THE STATE OF CALIFORNIA OR ITS OFFICERS OR AGENTS SHALL NOT BE RESPONSIBLE FOR THE ACCURACY OR COMPLETENESS OF SCANNED COPIES OF THIS PLAN SHEET.</small>					

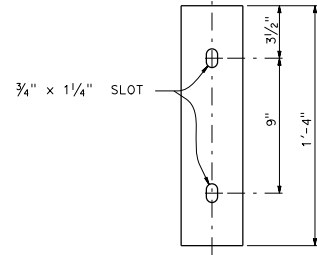
TO ACCOMPANY PLANS DATED _____

NOTES:

1. Verify pole dimensions at terminal compartment for fabrication of backing plate and curved washer.
2. Backing plate to be galvanized after fabrication.
3. 3/4" x 0.044" minimum, rounded edge stainless steel straps, double wrapped with 2" long bend under stainless steel strap buckle.
4. For miscellaneous details for signal mounting not shown see Revised Standard Plan RSP ES-4D.
5. If the terminal compartment has a cable entry guide on the rear face, remove the cable entry guide to a level that will not interfere with the wood post. Close any unused cable entry locations with raintight cap.



ELEVATION

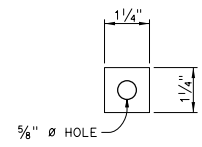


ELEVATION

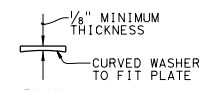


PLAN

BACKING PLATE
DETAIL

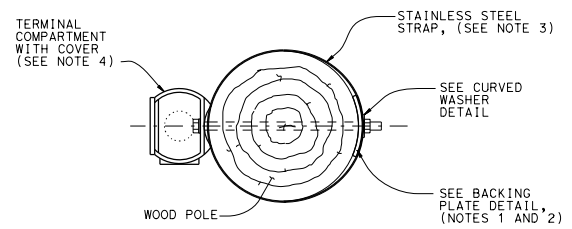


ELEVATION



PLAN

CURVED WASHER
DETAIL



SECTION A-A

SIDE MOUNTING
TERMINAL COMPARTMENT

STATE OF CALIFORNIA
DEPARTMENT OF TRANSPORTATION

**TEMPORARY WOOD POLES
DETAILS No. 4**

NO SCALE
RSP ES-190 DATED OCTOBER 19, 2018 SUPERSEDES STANDARD PLAN ES-190
DATED MAY 31, 2018 - PAGE 965 OF THE STANDARD PLANS BOOK DATED 2018.

REVISED STANDARD PLAN RSP ES-19D

2018 REVISED STANDARD PLAN RSP ES-19D