


TABLE XV

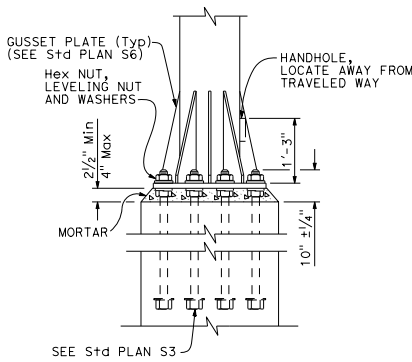
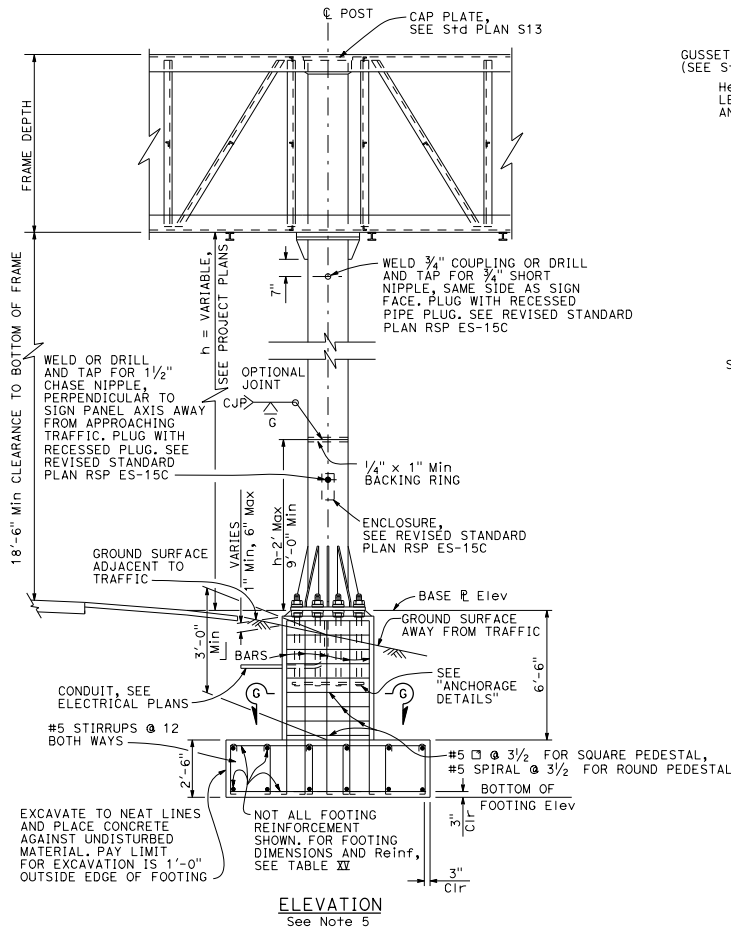
| POST TYPE | PIPE NPS | PIPE THICKNESS | CAP PLATE SIZE FOR CHORD L's 5 x 5 | | CAP PLATE SIZE FOR CHORD L's 6 x 6 | | ROUND PEDESTAL | | | | | SQUARE PEDESTAL | | | | | SPREAD FOOTING | | | | |
|-----------|----------|----------------|------------------------------------|-------------------------------|------------------------------------|-----------------|----------------|----------------------|-------------------------------|-----------------|-------------------|-----------------|---------|--------------|-------------------------|-------------------------|----------------|------------------|--------|-------|---------|
| | | | PEDESTAL SIZE Dia | VERTICAL EQUALLY SPACED TOTAL | J-BARS BAR SIZE | SPIRAL BAR SIZE | PITCH | PEDESTAL SIZE SQUARE | VERTICAL EQUALLY SPACED TOTAL | J-BARS BAR SIZE | # OF BARS EA FACE | HOOP BAR SIZE | SPACING | (SEE NOTE 2) | | | | | | | |
| | | | | | | | | | | | | | | WIDTH | | LONGITUDINAL | | FOOTING STIRRUPS | | | |
| | | | | | | | | | | | | TOP | BOTTOM | TOP | BOTTOM | | | | | | |
| II | 14 | 1/2" | 2'-0" x 2'-0" x 1" | 2'-2" x 2'-2" x 1" | 5'-3" | 16 | #10 | #5 | 3 1/2" | 5'-3" | 16 | #10 | 5 | #5 | 3 1/2" | 12'-0" x 14'-0" x 2'-6" | 14-#6 | 14-#7 | 13-#9 | 13-#9 | #5 @ 12 |
| III | 16 | | 2'-2" x 2'-2" x 1" | 2'-4" x 2'-4" x 1" | | | | | | | | | | | 12'-0" x 14'-0" x 2'-6" | 15-#6 | 15-#7 | | | | |
| IV | 18 | | 2'-4" x 2'-4" x 1" | 2'-6" x 2'-6" x 1" | | | | | | | | | | | 12'-0" x 14'-0" x 2'-6" | 15-#6 | 15-#7 | | | | |
| V | 20 | | 2'-6" x 2'-6" x 1" | 2'-8" x 2'-8" x 1" | | | | | | | | | | | 13'-0" x 14'-0" x 2'-6" | 15-#6 | 15-#7 | 14-#9 | 14-#9 | | |
| VI | 24 | | 2'-10" x 2'-10" x 1" | 3'-0" x 3'-0" x 1" | 5'-9" | | | | | | | | | | 13'-0" x 16'-0" x 2'-6" | 17-#7 | 17-#7 | | 14-#11 | | |
| VII | 24 | 3/4" | | | | | | | | | | | | | 13'-0" x 17'-0" x 2'-6" | 18-#7 | 18-#7 | | | | |
| VIII | 24 | 3/32" | | | | | | | | | | | | | 13'-0" x 18'-0" x 2'-6" | 19-#7 | 19-#7 | | | | |
| IX | 24 | 3/32" | | | | | | | | | | | | | 13'-0" x 18'-0" x 2'-6" | 19-#7 | 19-#7 | | | | |

| | | | | | |
|------|--------|-------|--------------------------|-----------|--------------|
| DIST | COUNTY | ROUTE | POST MILES TOTAL PROJECT | SHEET No. | TOTAL SHEETS |
| | | | | | |

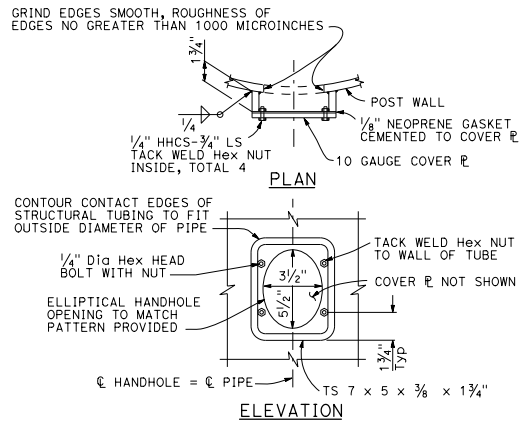


 REGISTERED CIVIL ENGINEER
 October 19, 2018
 PLANS APPROVAL DATE
 THE STATE OF CALIFORNIA OR ITS OFFICERS OR AGENTS SHALL NOT BE RESPONSIBLE FOR THE ACCURACY OR COMPLETENESS OF SCANNED COPIES OF THIS PLAN SHEET.

TO ACCOMPANY PLANS DATED _____

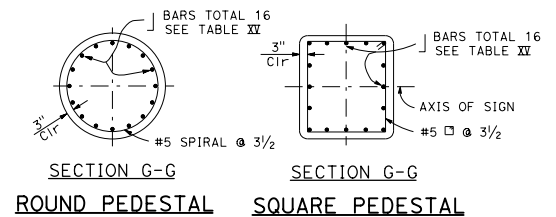


ELEVATION
ANCHORAGE DETAILS



NOTES:

- For "General Notes", see Revised Standard Plan RSP S1.
- Longer side of footing (longitudinal) shall be normal to axis of sign.
- Backfill shall be in place prior to erection of post.
- Thread upper 10" of anchor bolts and galvanize upper 1'-0".
- Spread footing with square pedestal foundation shown, use Pile Foundation when shown on the Project Plans. For pile foundation details, see Standard Plan S8.
- Anchor plates may be retained with hexagon nut or formed head as alternatives to details shown.
- On single post sign structures, the post shall be raked out of plumb, with the use of the leveling nuts to make the bottom of the sign frame level.
- At final position of post all top and bottom nuts shall be tightened against base plate.
- When foundation is located on a steep slope with exposed face of concrete adjacent to traffic, see "Detail C" on Standard Plan S8, as applicable.
- Slope protection required when indicated on the Project Plans.



STATE OF CALIFORNIA
DEPARTMENT OF TRANSPORTATION
**OVERHEAD SIGNS-TRUSS
SINGLE POST TYPE
POST TYPES II THROUGH IX**
NO SCALE

RSP S2 DATED OCTOBER 19, 2018 SUPERSEDES STANDARD PLAN S2 DATED MAY 31, 2018 - PAGE 410 OF THE STANDARD PLANS BOOK DATED 2018.

REVISED STANDARD PLAN RSP S2

2018 REVISED STANDARD PLAN RSP S2