
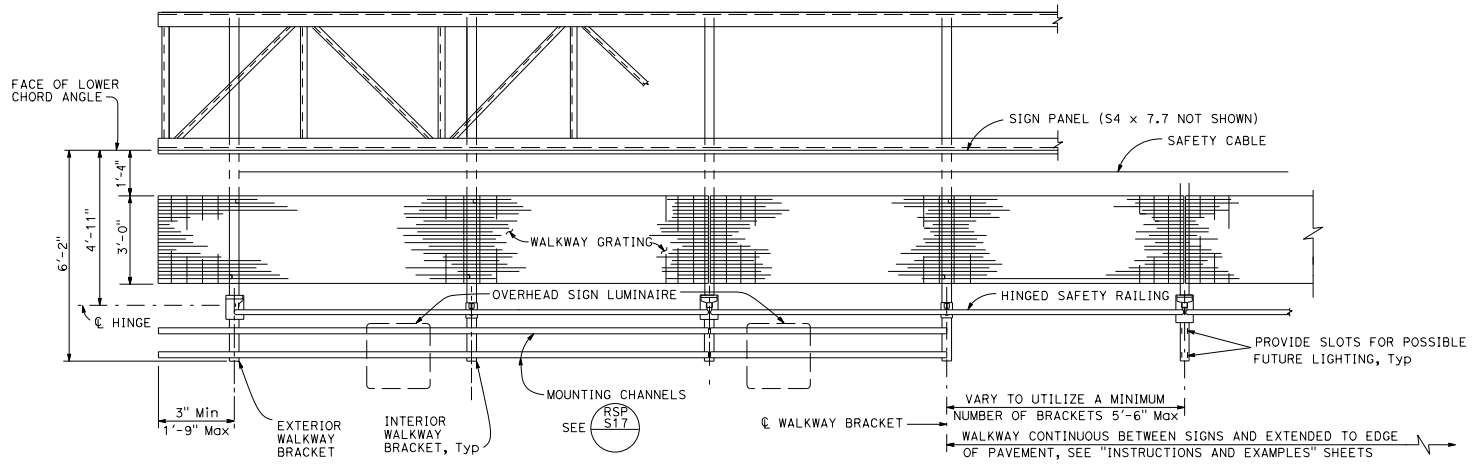


DIST	COUNTY	ROUTE	POST MILES TOTAL PROJECT	SHEET No.	TOTAL SHEETS

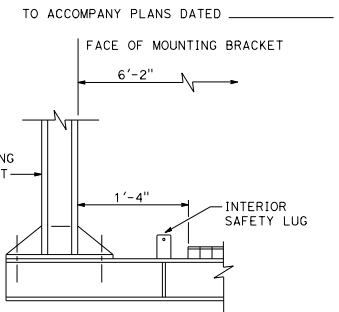


 REGISTERED CIVIL ENGINEER
 October 19, 2018
 PLANS APPROVAL DATE
 No. C63939
 Exp. 9-30-20
 CIVIL
 STATE OF CALIFORNIA

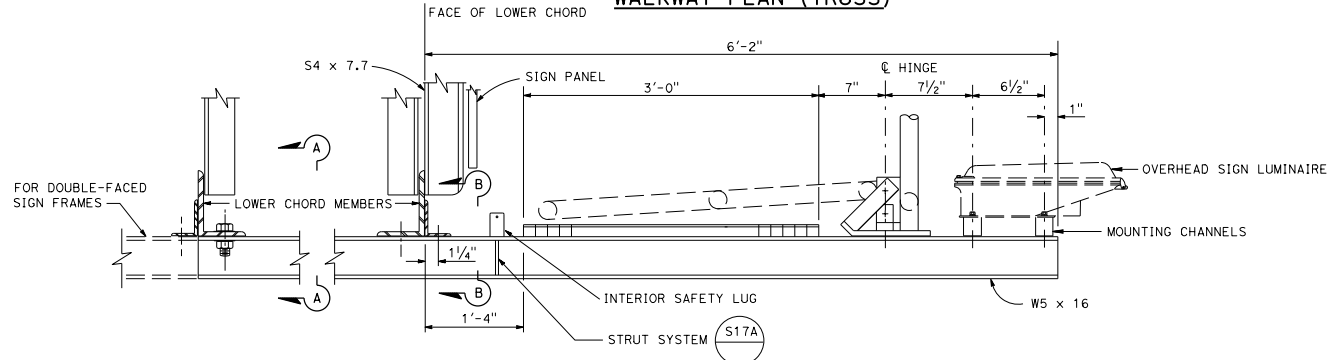
THE STATE OF CALIFORNIA OR ITS OFFICERS OR AGENTS SHALL NOT BE RESPONSIBLE FOR THE ACCURACY OR COMPLETENESS OF SCANNED COPIES OF THIS PLAN SHEET.



WALKWAY PLAN (TRUSS)

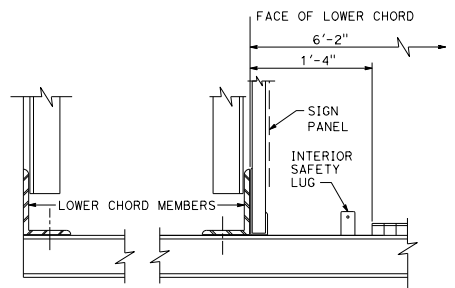


TUBULAR AND BRIDGE MOUNTED

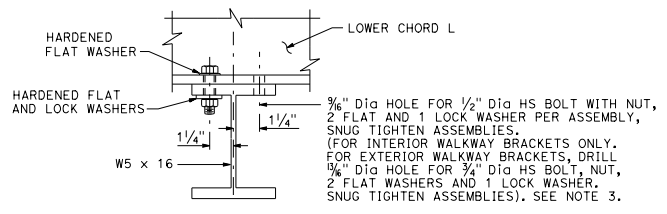


TRUSS

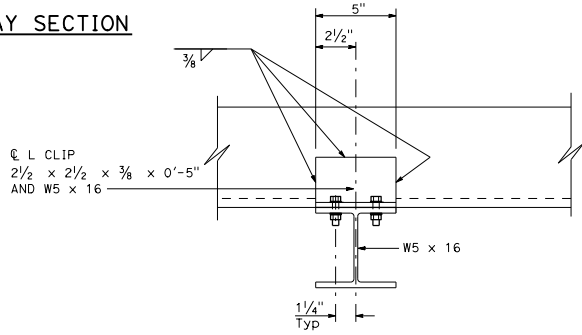
TYPICAL WALKWAY SECTION



**BOX BEAM
CLOSED TRUSS**



SECTION A-A



SECTION B-B

NOTES:

1. For spacing of overhead sign luminaire, see Revised Standard Plan RSP ES-15A.
2. For safety lug details, see Revised Standard Plan RSP S17.
3. For double faced sign frames with double walkways, use a total 8 bolt assemblies per bracket.

STATE OF CALIFORNIA
 DEPARTMENT OF TRANSPORTATION
**OVERHEAD SIGNS
 WALKWAY DETAILS No. 1**
 NO SCALE

RSP S16 DATED OCTOBER 19, 2018 SUPERSEDES STANDARD PLAN S16 DATED MAY 31, 2018 - PAGE 422 OF THE STANDARD PLANS BOOK DATED 2018.

REVISED STANDARD PLAN RSP S16

2018 REVISED STANDARD PLAN RSP S16